

APP CRS 215°	Rwy Ldg TDZE Apt Elev	5500 5757 5762
------------------------	-----------------------------	---

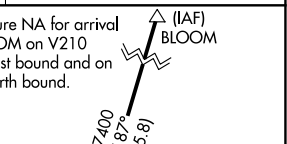
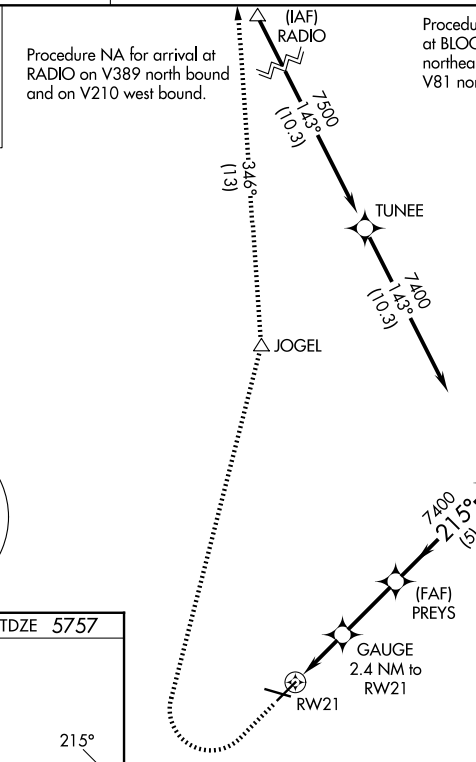
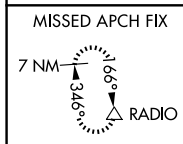
RNAV (GPS) RWY 21

PERRY STOKES (TAD)

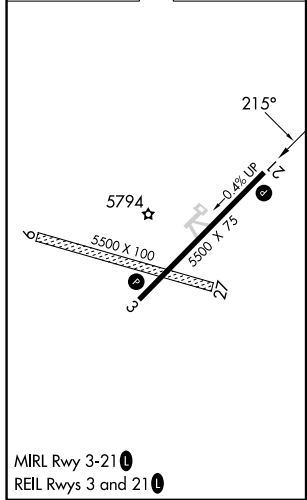
⚠ Circling NA to Rwy 9 and 27. DME/DME RNP-0.3 NA. When local altimeter setting not received, use Pueblo altimeter setting and increase all MDA 300 feet: increase LNAV Cat C/D visibility ½ SM, Circling Cat B/D visibility ¼ SM and Circling Cat C visibility 1 SM. VDP NA when using Pueblo altimeter setting.

⚠ MISSED APPROACH: Climb to 6200 then climbing right turn to 10000 direct JOGEL and on track 346° to RADIO and hold.

ASOS 119.025	DENVER CENTER 128.375 379.95	UNICOM 122.8 (CTAF)
------------------------	--	-------------------------------



ELEV 5762	TDZE 5757
-----------	-----------



6200	10000	JOGEL	RADIO	PREYS	GOERS
↑	↷	△	tr 346° △		
		Gauge 2.4 NM to RW21		7400	
		0.8 NM to RW21		215°	
		6540		7400	
		0.8 NM		5 NM	
		1.6 NM		2.7 NM	
		2.7 NM		5 NM	
		≤ 3.00° TCH 40			
CATEGORY	A		B	C	D
LNAV MDA	6020-1 263 (300-1)				
CIRCLING	6180-1 418 (500-1)	6300-1 538 (600-1)	6340-1½ 578 (600-1½)	6580-2¾ 818 (900-2¾)	

SW-1, 16 APR 2026 to 14 MAY 2026

SW-1, 16 APR 2026 to 14 MAY 2026