

| | | |
|-------------|----------|-------------|
| APP CRS | Rwy Ldg | 5500 |
| 035° | TDZE | 5757 |
| | Apt Elev | 5762 |

RNAV (GPS) RWY 3

PERRY STOKES (TAD)

RNP APCH.

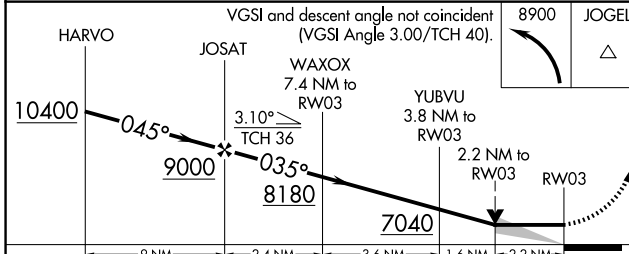
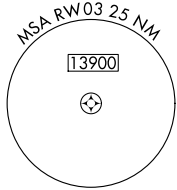
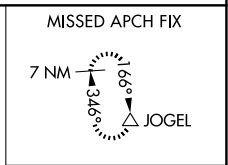
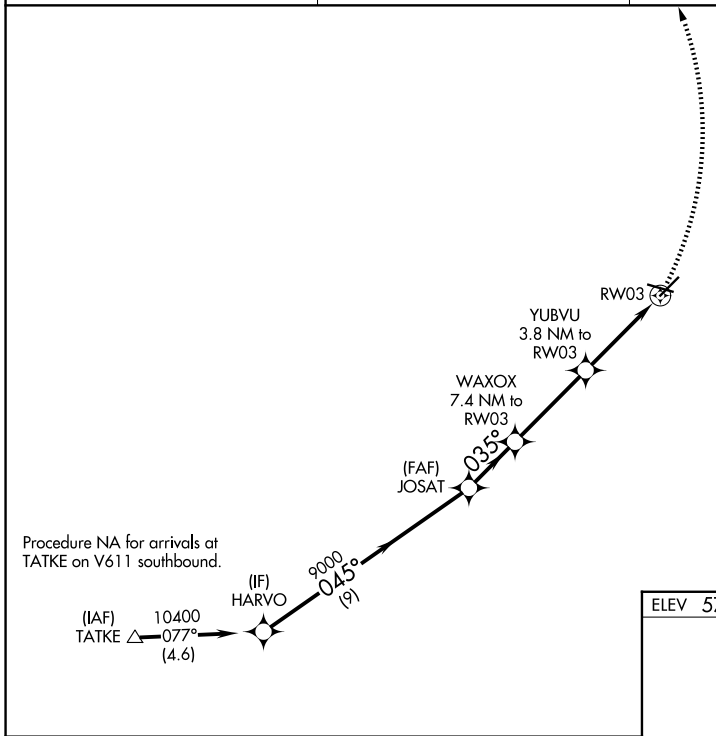
⚠ Circling NA to Rwy 9 and 27. VDP NA when using Pueblo Meml altimeter setting. When local altimeter setting not received, use Pueblo Meml altimeter setting and increase all MDAs 300 feet; increase LNAV Cats A/B visibility ¼ SM and Cats C/D visibility 1 SM and Circling Cats A/B visibility ¼ SM, Cat C 1 SM, and Cat D ½ SM.

MISSED APPROACH: Climbing left turn to 8900 direct JOGEL and hold.

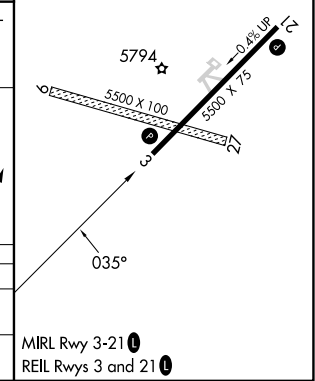
ASOS
119.025

DENVER CENTER
128.375 379.95

UNICOM
122.8 (CTAF) 0



| | |
|-----------|-----------|
| ELEV 5762 | TDZE 5757 |
|-----------|-----------|



| CATEGORY | A | B | C | D |
|----------|-----------------------|-------------------------|-----------------------|-------------------------|
| LNAV MDA | 6500-1 743 (800-1) | 6500-1¼ 743 (800-1¼) | 6500-2 743 (800-2) | 743 (800-2) |
| CIRCLING | 6500-1 738 (800-1) | 6500-1¼ 738 (800-1¼) | 6500-2 738 (800-2) | 6560-2½ 798 (800-2½) |

MIRL Rwy 3-21 0
REIL Rwy 3 and 21 0

SW-1, 16 APR 2026 to 14 MAY 2026

SW-1, 16 APR 2026 to 14 MAY 2026