

(TAD1.TAD) 23278

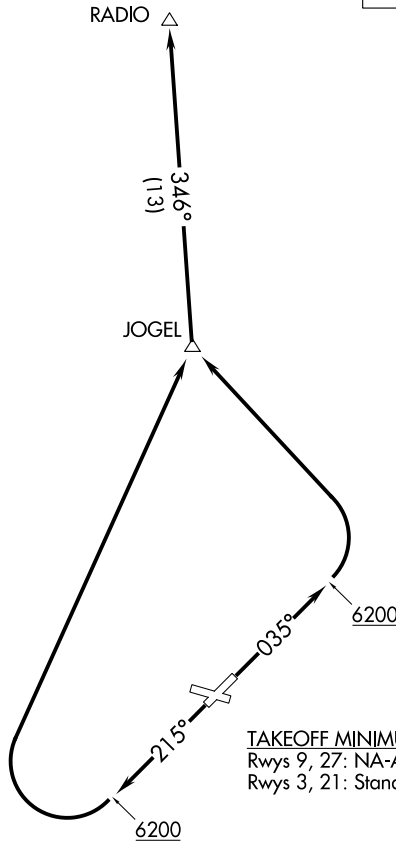
AL-427 (FAA)

# TRINIDAD ONE DEPARTURE (OBSTACLE) (RNAV)

PERRY STOKES (TAD)  
TRINIDAD, COLORADO

DENVER CENTER  
128.375

**TOP ALTITUDE:  
ASSIGNED BY ATC**



**TAKEOFF MINIMUMS**  
Rwys 9, 27: NA-ATC  
Rwys 3, 21: Standard

NOTE: GPS required.

NOTE: RNAV-1.

### TAKEOFF OBSTACLE NOTES

Rwy 3: Multiple trees beginning 46' from DER, left and right of centerline, up to 15' AGL/5744' MSL.

NOTE: Chart not to scale.

### DEPARTURE ROUTE DESCRIPTION

TAKEOFF RUNWAY 3: Climb heading 035° to 6200, then climbing left turn to 10000 direct JOGEL and on track 346° to RADIO.

TAKEOFF RUNWAY 21: Climb heading 215° to 6200, then climbing right turn to 10000 direct JOGEL and on track 346° to RADIO.

### LOST COMMUNICATIONS:

If not in contact with Denver ARTCC at 10000 or assigned altitude if lower, continue climb to assigned altitude and thence on assigned route.

# TRINIDAD ONE DEPARTURE (OBSTACLE) (RNAV)

TRINIDAD, COLORADO  
PERRY STOKES (TAD)

(TAD1.TAD) 15SEP16

SW-1, 16 APR 2026 to 14 MAY 2026

SW-1, 16 APR 2026 to 14 MAY 2026