

TUCSON, ARIZONA

# HI-ILS or LOC Z RWY 13

LOC I-AFB <b>109.3</b>	APCH CRS <b>128°</b>	Rwy Idg <b>13,645</b> TDZE <b>2615</b> Arpt Elev <b>2704</b>
---------------------------	-------------------------	--

[USAF]

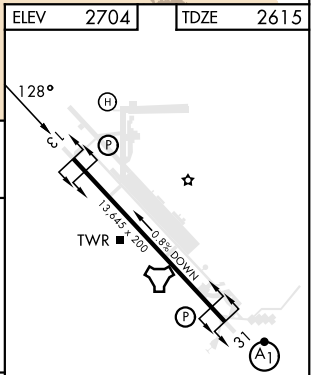
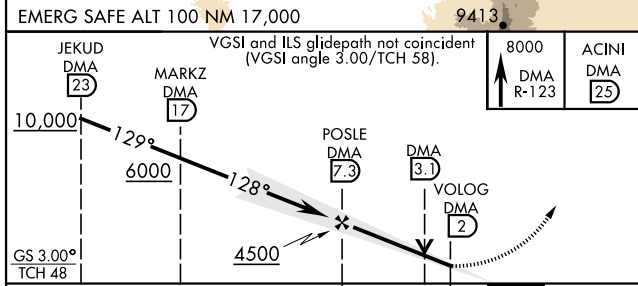
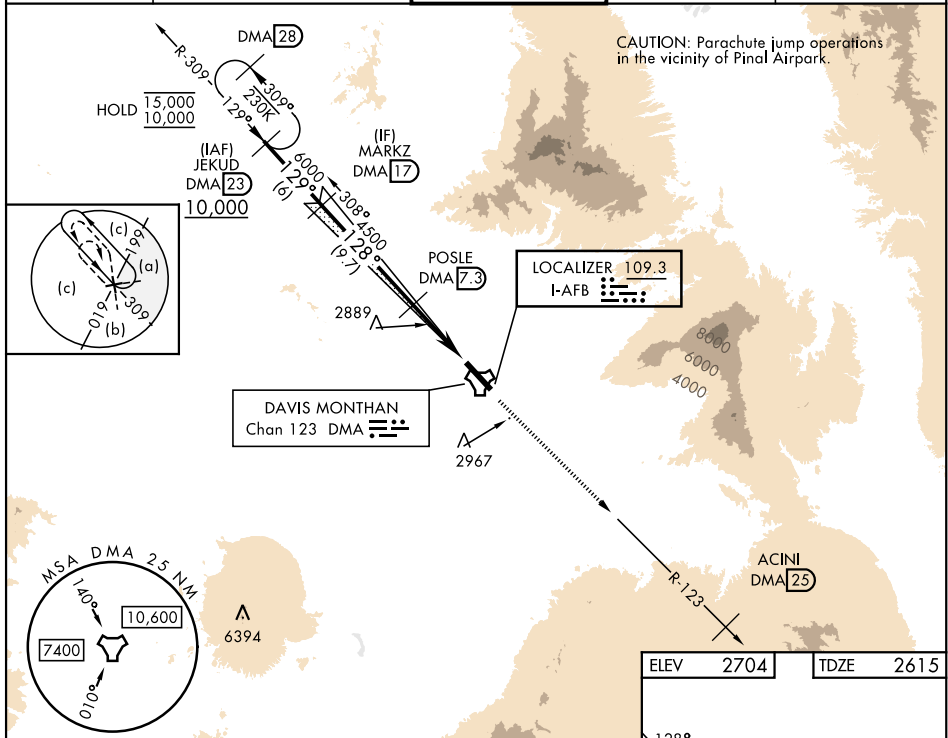
DAVIS-MONTHAN AFB (KDMA)

DME or RADAR required

\* Circling not authorized SW of Rwy 13-31.

MISSED APPROACH: Climbing to 8000 intercept DMA TACAN R-123 to ACINI. Expect RADAR vectors.

ATIS★ <b>132.3 270.1</b>	TUCSON APP CON 066°-274° <b>119.4 318.1</b> 275°-065° <b>125.1 269.55</b>	TOWER <b>118.85 253.5</b>	GND CON <b>121.8 275.8</b>	CLNC DEL <b>121.8 275.8</b>
-----------------------------	---	------------------------------	-------------------------------	--------------------------------



CATEGORY	C	D	E
S-ILS 13		2815/40 200 (200-¾)	
S-LOC 13		3160-1½ 545 (500-1½)	
CIRCLING*	3280-1⅝ 576 (600-1⅝)	3420-2¼ 716 (800-2¼)	3460-2¾ 756 (800-2¾)

REIL Rwy 13	
HIRL Rwy 13-31	
FAF to MAP 5.3 NM	
Knots	120 140 160 180 200
Min:Sec	2:39 2:16 1:59 1:46 1:35

TUCSON, ARIZONA

32°10'N-110°53'W

DAVIS-MONTHAN AFB (KDMA)

Orig 31OCT24

# HI-ILS or LOC Z RWY 13

SW-4, 16 APR 2026 to 14 MAY 2026

SW-4, 16 APR 2026 to 14 MAY 2026