

# HI-ILS or LOC Z RWY 31

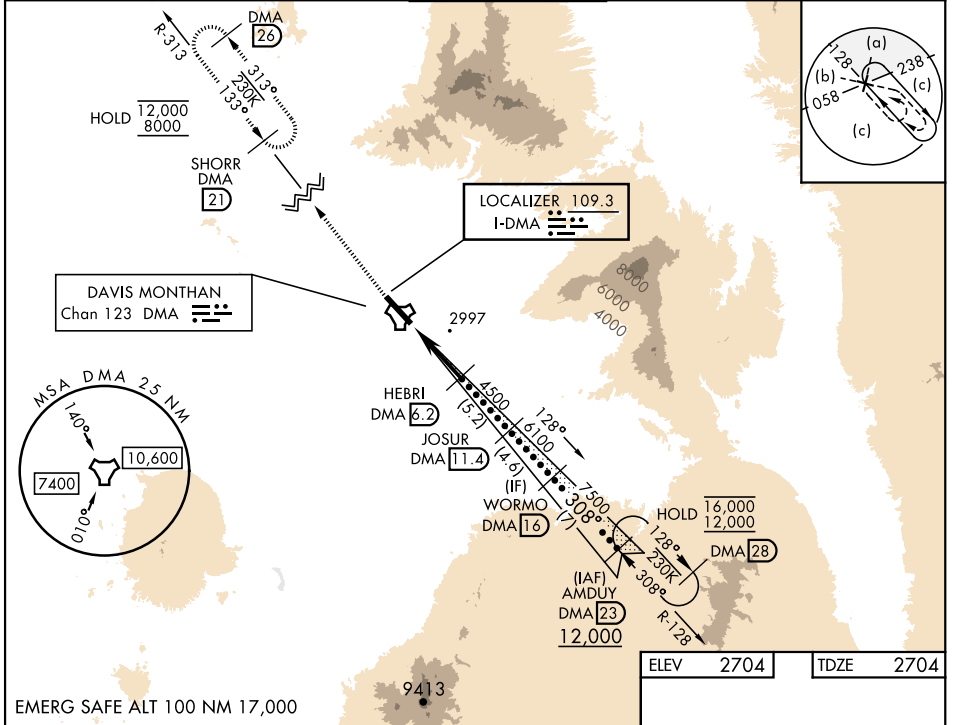
LOC I-DMA <b>109.3</b>	APCH CRS <b>308°</b>	Rwy Idg <b>13,645</b> TDZE <b>2704</b> Arprt Elev <b>2704</b>
---------------------------	-------------------------	---

[USAF]

DAVIS-MONTHAN AFB (KDMA)

DME or RADAR required	ALSF-1 	MISSED APPROACH: Climb to 8000, intercept DMA TACAN R-313 to SHORR and hold, continue climb-in-hold to 8000.
<ul style="list-style-type: none"> <li>* When ALS inop, increase RVR to 40, vis to 3/4 mile.</li> <li>** When ALS inop, increase vis to 2 miles.</li> <li>*** Circling not authorized SW of Rwy 13-31.</li> </ul>		

ATIS★ <b>132.3 270.1</b>	TUCSON APP CON 066°-274° <b>119.4 318.1</b> 275°-065° <b>125.1 269.55</b>	TOWER <b>118.85 253.5</b>	GND CON <b>121.8 275.8</b>	CLNC DEL <b>121.8 275.8</b>
-----------------------------	---	------------------------------	-------------------------------	--------------------------------



SW-4, 16 APR 2026 to 14 MAY 2026

SW-4, 16 APR 2026 to 14 MAY 2026

ELEV 2704	TDZE 2704						
EMERG SAFE ALT 100 NM 17,000							
8000 ↑ DMA R-313	SHORR DMA 21						
WALRA DMA 1.3	HEBRI DMA 6.2	JOSUR DMA 11.4	WORMO DMA 16	AMDUY DMA 23			
4500	6100	7500	12,000				
0.5 NM	4.9 NM						
CATEGORY	C	D	E				
S-ILS 31*	2904/24	200	(200-1/2)				
S-LOC 31**	3400-1 1/2	696	(700-1 1/2)				
CIRCLING***	3400-2 696 (700-2)	3420-2 1/4 716 (800-2 1/4)	3460-2 3/4 756 (800-2 3/4)				
REIL Rwy 13 HIRL Rwy 13-31		FAF to MAP 4.9 NM					
		Knots	120	140	160	180	200
		Min:Sec	2:27	2:06	1:50	1:38	1:28

# HI-ILS or LOC Z RWY 31