

LOC/DME I-TUS 111.7 Chan 54	APP CRS 126°	Rwy Ldg 10996 TDZE 2599 Apt Elev 2643
---	------------------------	--

ILS or LOC RWY 12

TUCSON INTL (TUS)

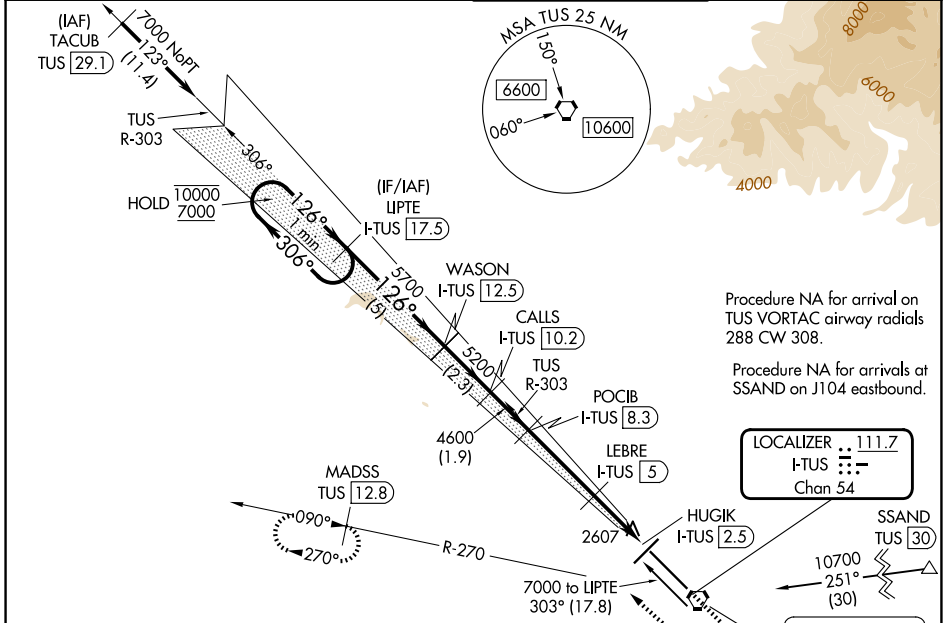
RADAR or DME required. RADAR required for procedure entry at TACUB.

▼ For inop ALS, increase S-ILS 12 Cat E visibility to RVR 4000,
▲ S-LOC 12 Cat E visibility to 2 ½ SM; LEBRE fix minimums: S-LOC 12 Cat C/D/E visibility to RVR 5500.
 *RVR 1800 authorized with use of FD or AP or HUD to DA.



MISSED APPROACH: Climb to 4000 then climbing right turn to 6000 on heading 300° and on TUS VORTAC R-270 to MADSS/TUS 12.8 DME and hold, continue climb in-hold to 6000.

ATIS 123.8 279.65	TUCSON APP CON 119.4 318.1	TUCSON TOWER 118.3 257.8	GND CON 120.025 348.6
-----------------------------	--------------------------------------	------------------------------------	---------------------------------



Procedure NA for arrival on TUS VORTAC airway radials 288 CW 308.

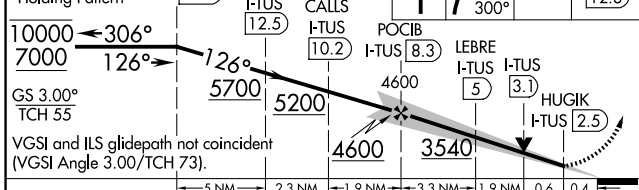
Procedure NA for arrivals at SSAND on J104 eastbound.

LOCALIZER 111.7 I-TUS Chan 54
--

TUCSON 116.0 I-TUS Chan 107
--

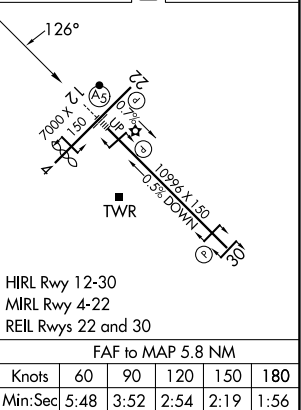
Use I-TUS DME when on the localizer course.

One Minute Holding Pattern	LIPTE I-TUS (17.5)	WASON I-TUS (12.5)	CALLS I-TUS (10.2)	POCIB I-TUS (8.3)	LEBRE I-TUS (5)	HUGIK I-TUS (2.5)	MADSS TUS (12.8)
----------------------------	--------------------	--------------------	--------------------	-------------------	-----------------	-------------------	------------------



CATEGORY	A	B	C	D	E
S-ILS 12*	2799/24 200 (200-½)				
S-LOC 12	3540/40	941 (900-¾)	3540-2 941 (900-2)		
CIRCLING	3540-1¼	897 (900-1¼)	3540-2¾ 897 (900-2¾)	3640-3 997 (1000-3)	3900-3 1257 (1300-3)
LEBRE FIX MINIMUMS					
S-LOC 12	2960/24	361 (400-½)	2960/35	361 (400-¾)	
CIRCLING	3160-1 517 (600-1)	3220-1 577 (600-1)	3220-1½ 577 (600-1½)	3640-3 997 (1000-3)	3900-3 1257 (1300-3)

ELEV 2643	D TDZE 2599
-----------	--------------------



HRL Rwy 12-30	MRL Rwy 4-22	REIL Rws 22 and 30			
FAF to MAP 5.8 NM					
Knots	60	90	120	150	180
Min:Sec	5:48	3:52	2:54	2:19	1:56