

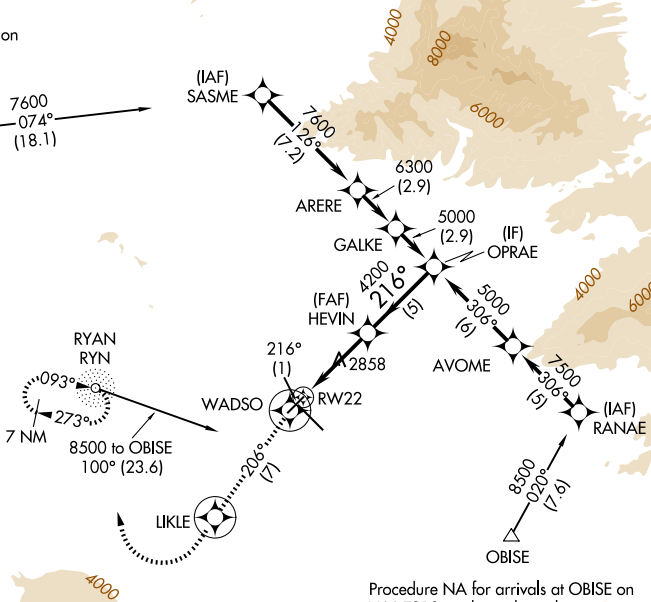
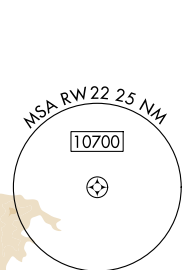
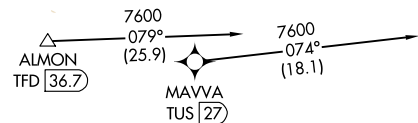
APP CRS 216°	Rwy Ldg TDZE Apt Elev	6000 2572 2643
------------------------	-----------------------------	---

RNAV (GPS) RWY 22

TUCSON INTL (TUS)

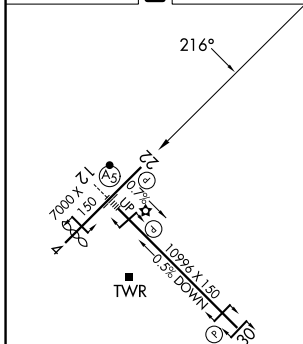
RNP APCH - GPS.		MISSED APPROACH: Climb to 6000 on track 216° to WADSO and 206° track to LIKLE and right turn direct RYN NDB and hold, continue climb-in-hold to 6000.	
<p>▼ Rwy 22 helicopter visibility reduction below ¼ SM NA. ▲ For uncompensated Baro-VNAV systems, LNAV/VNAV NA below -2°C or above 54°C.</p>		ATIS 123.8 279.65	TUCSON APP CON 119.4 318.1
		TUCSON TOWER 118.3 257.8	GND CON 120.025 348.6

Procedure NA for arrivals at ALMON on V66-105 northwest bound.



Procedure NA for arrivals at OBISE on V66-T310 northwest bound.

ELEV 2643	D	TDZE 2572
-----------	----------	-----------



HIRL Rwy 12-30
MIRL Rwy 4-22
REIL Rws 22 and 30

6000	WADSO	206° tr	LIKLE	RYN	OPRAE
↑ tr 216°					
	HEVIN	4200	5000		
	1.7 NM to RW22	4200	216°		GP 3.00°
					TCH 50
	1.7	3.2 NM	5 NM		
CATEGORY	A	B	C	D	
LNAV/VNAV DA	3145-2 573 (600-2)				
LNAV MDA	3160-1 588 (600-1)	3160-1¾ 588 (600-1¾)			
CIRCLING	3160-1 517 (600-1)	3220-1 577 (600-1)	3220-1¾ 577 (600-1¾)	3660-3 1017 (1100-3)	

SW-4, 16 APR 2026 to 14 MAY 2026

SW-4, 16 APR 2026 to 14 MAY 2026