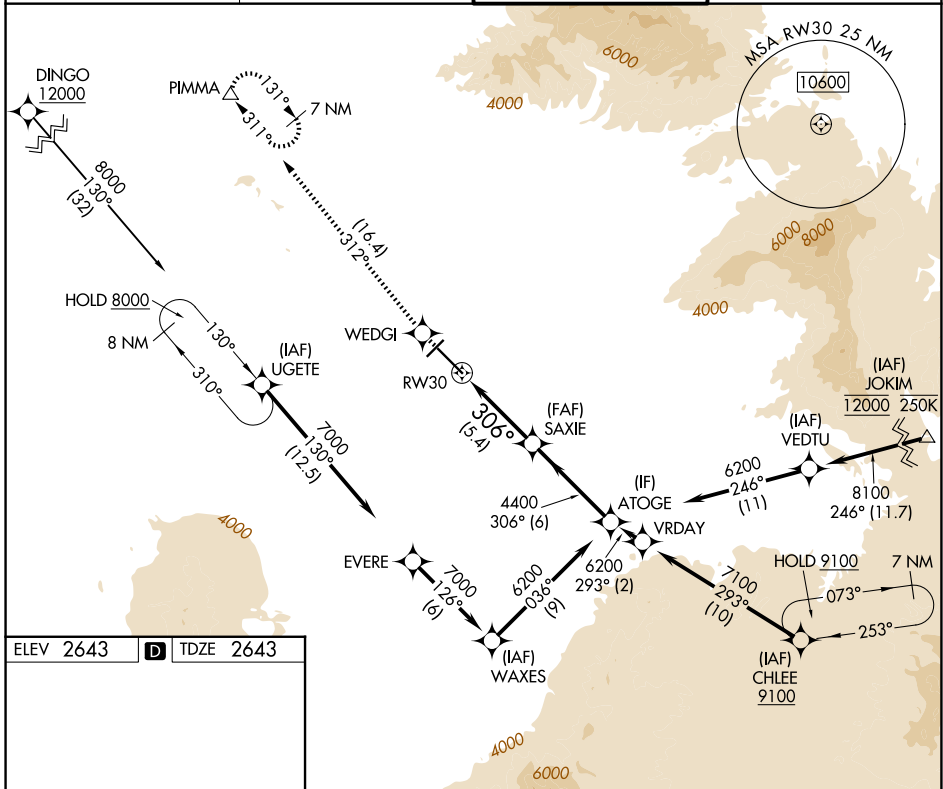


APP CRS <b>306°</b>	Rwy Ldg TDZE Apt Elev	<b>10996</b> <b>2643</b> <b>2643</b>
------------------------	-----------------------------	--

# RNAV (RNP) Y RWY 30

TUCSON INTL (TUS)

RNP AR APCH - GPS.		MISSED APPROACH: Climb to 6800 direct WEDGI and on track 312° to PIMMA and hold.	
ATIS <b>123.8 279.65</b>	TUCSON APP CON <b>119.4 318.1</b>	TUCSON TOWER <b>118.3 257.8</b>	GND CON <b>120.025 348.6</b>



ELEV 2643	<b>D</b>	TDZE 2643
-----------	----------	-----------

HIRL Rwy 12-30  
MIRL Rwy 4-22  
REIL Rwy 22 and 30

6800	WEDGI	PIMMA	VGSI and RNAV glidepath not coincident (VGSI Angle 3.00/TCH 81).
↑	✦	tr 312°	
CATEGORY	A	B	C
RNP 0.30 DA	3062-1½ 419 (500-1½)		
<b>AUTHORIZATION REQUIRED</b>			

SW-4, 16 APR 2026 to 14 MAY 2026

SW-4, 16 APR 2026 to 14 MAY 2026