


VORTAC TUS 116.0 Chan 107	APP CRS 123°	Rwy Ldg 10996 TDZE 2599 Apt Elev 2643
---	------------------------	--

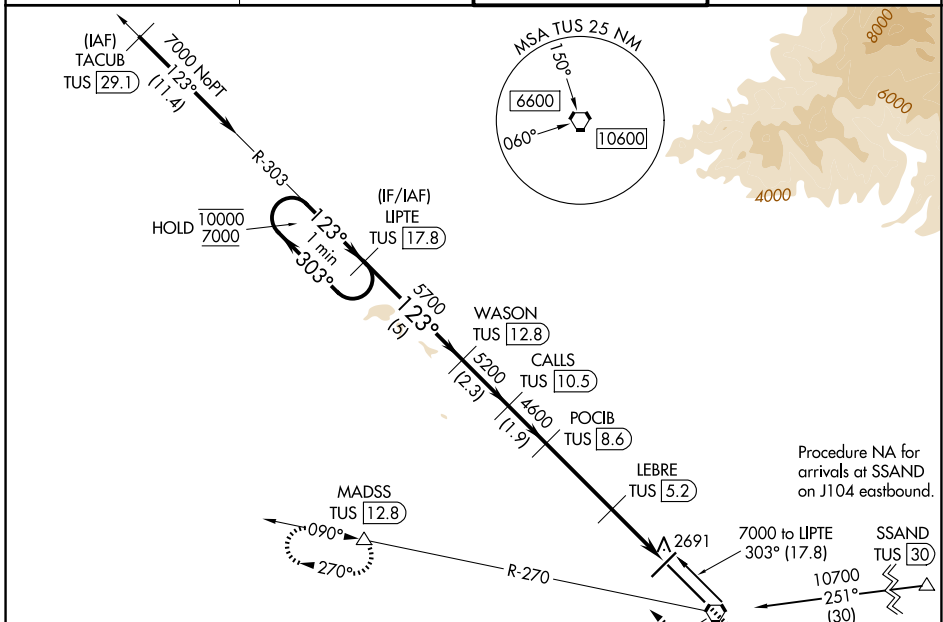
VOR or TACAN RWY 12

TUCSON INTL (TUS)

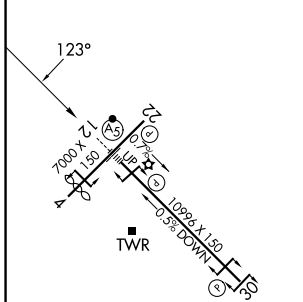
DME required. RADAR required for procedure entry at TACUB.
 For inop ALS, increase Cat E visibility to 1¼ SM.

MALSR
 MISSED APPROACH: Climb to 4000 then climbing right turn to 6000 on heading 300° and TUS VORTAC R-270 to MADSS/TUS 12.8 DME and hold, continue climb in hold to 6000.

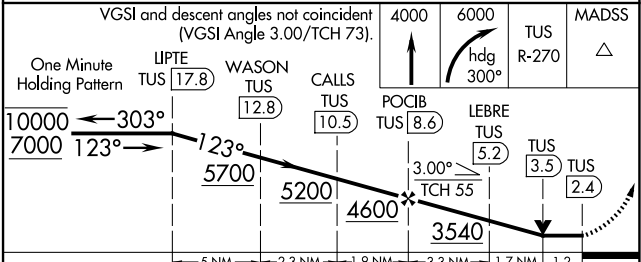
ATIS 123.8 279.65	TUCSON APP CON 119.4 318.1	TUCSON TOWER 118.3 257.8	GND CON 120.025 348.6
-----------------------------	--------------------------------------	------------------------------------	---------------------------------



ELEV 2643	D	TDZE 2599
-----------	----------	-----------



Procedure NA for arrivals at SSAND on J104 eastbound.
 Procedure NA for arrival on TUS VORTAC airway radials 288 CW 308.



CATEGORY	A	B	C	D	E
S-12	3020/24	421 (400-½)	3020/40	421 (400-¾)	
CIRCLING	3160-1 517 (600-1)	3180-1 537 (600-1)	3200-1½ 557 (600-1½)	3660-3 1017(1100-3)	3920-3 1277(1300-3)

HIRL Rwy 12-30
 MIRL Rwy 4-22
 REIL Rwy 22 and 30

TUCSON, ARIZONA
 Orig 30NOV23

32°07'N-110°56'W

VOR or TACAN RWY 12

SW-4, 16 APR 2026 to 14 MAY 2026

SW-4, 16 APR 2026 to 14 MAY 2026