

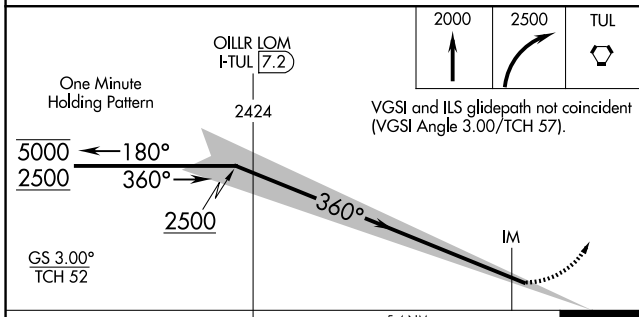
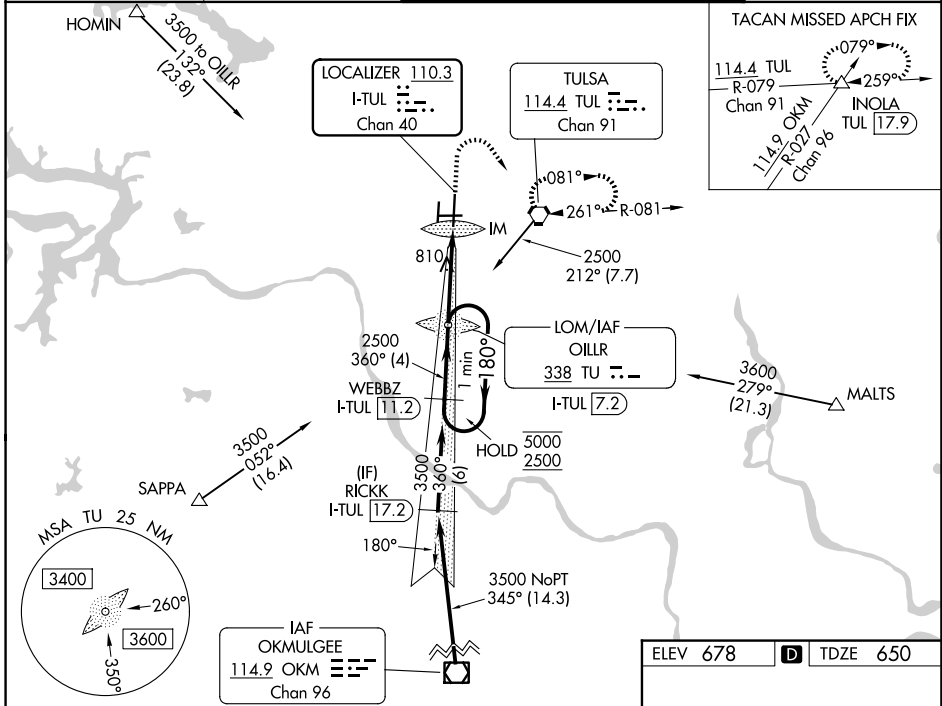
LOC/DME I-TUL <b>110.3</b> Chan 40	APP CRS <b>360°</b>	Rwy Ldg <b>10000</b> TDZE <b>650</b> Apt Elev <b>678</b>
--	------------------------	--

# ILS RWY 36R (CAT II)

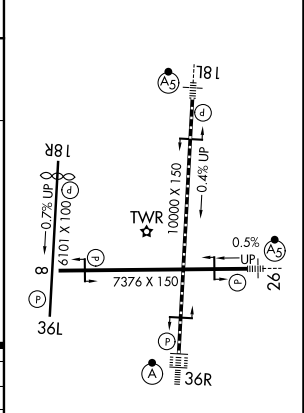
TULSA INTL (TUL)

ADF or DME required for procedure entry.	ALSF-2 	MISSED APPROACH: Climb to 2000 then climbing right turn to 2500 direct TUL VORTAC and hold. (TACAN aircraft climb to 2000 then climbing right turn to 3500 via TUL VORTAC R-079 to INOLA INT/17.9 DME and hold E, RT, 259° inbound).
ASR Simultaneous approach authorized.		

D-ATIS <b>124.9 377.2</b>	TULSA APP CON <b>124.0 338.3</b>	TULSA TOWER <b>121.2 310.8</b> (08/26, 18L/36R) <b>118.7 257.8</b> (18R/36L)	GND CON <b>121.9 348.6</b>
------------------------------	-------------------------------------	--	-------------------------------



ELEV 678	<b>D</b> TDZE 650
----------	-------------------



CATEGORY	A	B	C	D
S-ILS 36R		RA 116/12	100	DA 750

**CATEGORY II ILS-SPECIAL AIRCREW & AIRCRAFT CERTIFICATION REQUIRED**

TDZ/CL Rwy 36R  
HIRL Rwys 8-26, 18L-36R and 18R-36L  
REIL Rwys 8, 18R and 36L

SC-1, 16 APR 2026 to 14 MAY 2026

SC-1, 16 APR 2026 to 14 MAY 2026