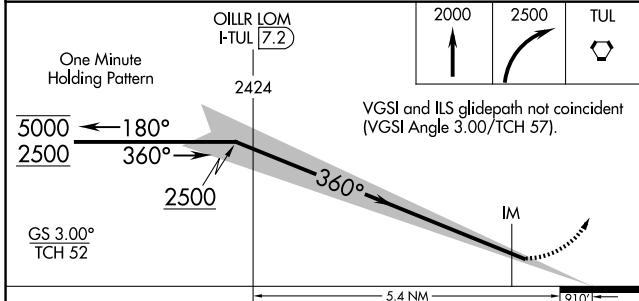
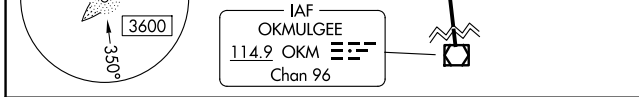
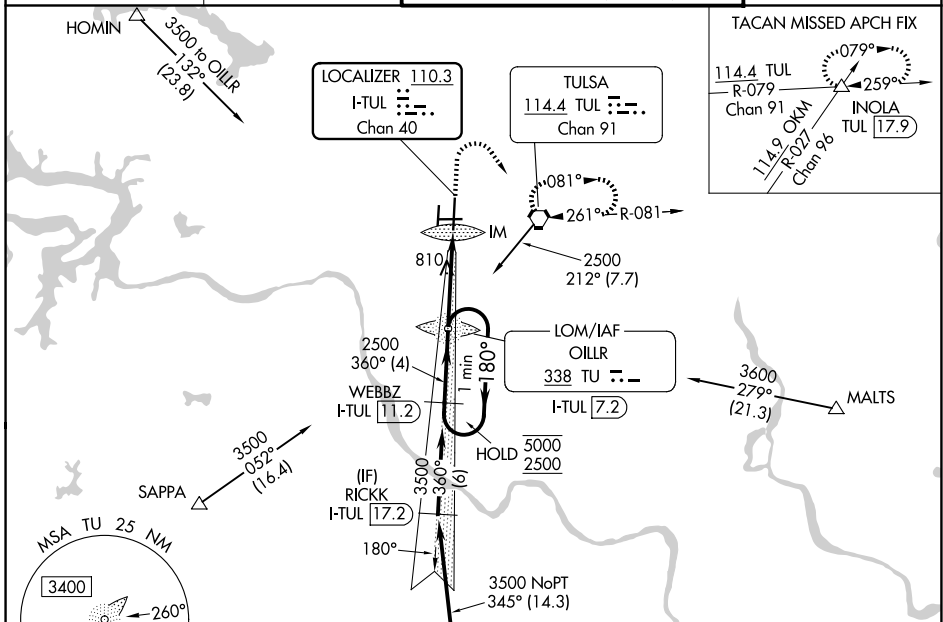


| | | |
|---|------------------------|--|
| LOC/DME I-TUL 110.3 Chan 40 | APP CRS 360° | Rwy Ldg 10000 TDZE 650 Apt Elev 678 |
|---|------------------------|--|

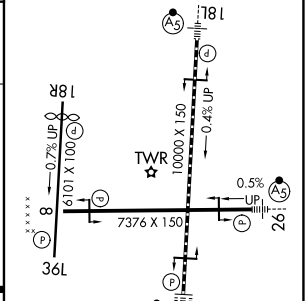
ILS RWY 36R (SA CAT I)

TULSA INTL (TUL)

| | | | |
|--|--|--|--|
| ADF or DME required for procedure entry. | | ALSIF-2 | MISSED APPROACH: Climb to 2000 then climbing right turn to 2500 direct TUL VORTAC and hold. (TACAN aircraft climb to 2000 then climbing right turn to 3500 via TUL VORTAC R-079 to INOLA INT/17.9 DME and hold E, RT, 259° inbound). |
| ASR | Simultaneous approach authorized. Requires specific OPSEC, MSPEC, or LOA approval and use of HUD to DH. | | |
| D-ATIS 124.9 377.2 | TULSA APP CON 124.0 338.3 | TULSA TOWER 121.2 310.8 (08/26, 18L/36R) 118.7 257.8 (18R/36L) | GND CON 121.9 348.6 |



| | |
|----------|-------------------|
| ELEV 678 | D TDZE 650 |
|----------|-------------------|



| | | | | |
|-----------|----------------------|---|---|---|
| CATEGORY | A | B | C | D |
| S-ILS 36R | RA 166/14 150 DA 800 | | | |

SA CATEGORY I ILS-SPECIAL AIRCREW & AIRCRAFT CERTIFICATION REQUIRED

TDZ/CL Rwy 36R
HIRL Rwys 8-26, 18L-36R and 18R-36L
REIL Rwys 8, 18R and 36L

SC-1, 16 APR 2026 to 14 MAY 2026

SC-1, 16 APR 2026 to 14 MAY 2026