

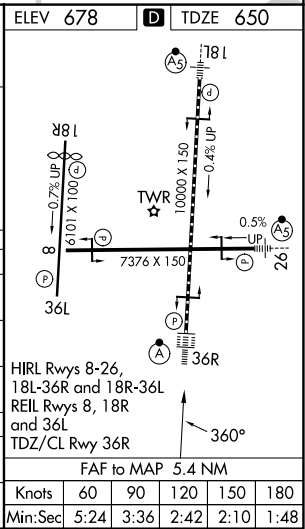
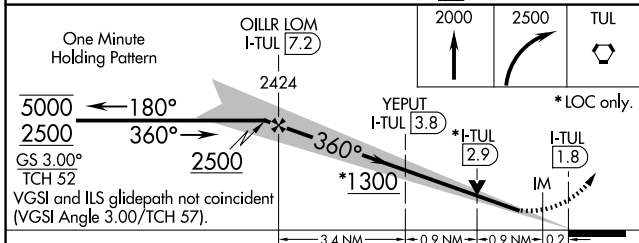
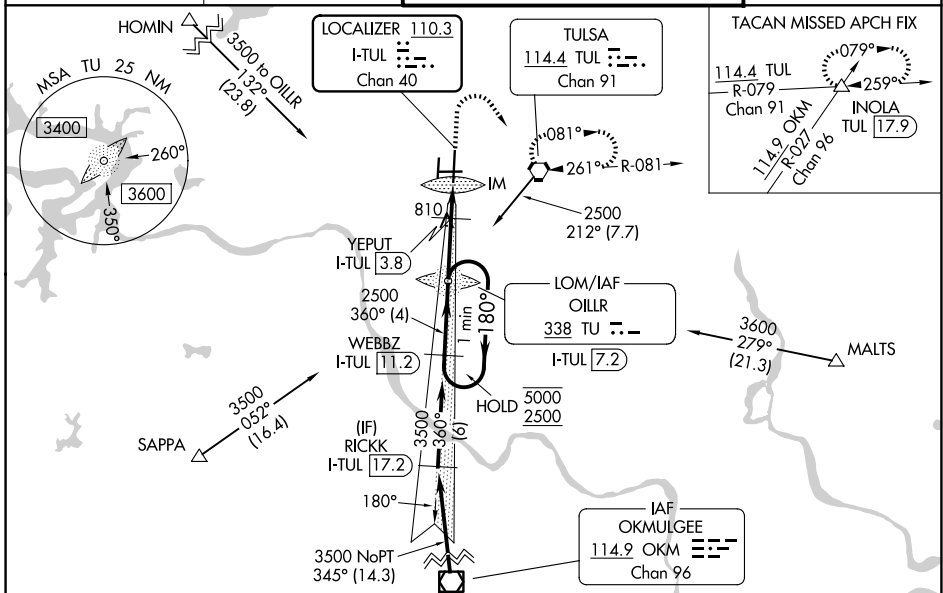
LOC/DME I-TUL 110.3 Chan 40	APP CRS 360°	Rwy Ldg 10000 TDZE 650 Apt Elev 678
---	------------------------	--

ILS or LOC RWY 36R

TULSA INTL (TUL)

ADF or DME required for procedure entry.	ALSF-2	MISSED APPROACH: Climb to 2000 then climbing right turn to 2500 direct TUL VORTAC and hold. (TACAN aircraft climb to 2000 then climbing right turn to 3500 via TUL VORTAC R-079 to INOLA INT/17.9 DME and hold E, RT, 259° inbound).
--	--------	--

D-ATIS 124.9 377.2	TULSA APP CON 124.0 338.3	TULSA TOWER 121.2 310.8 (08/26, 18L/36R) 118.7 257.8 (18R/36L)	GND CON 121.9 348.6
------------------------------	-------------------------------------	--	-------------------------------



CATEGORY	A	B	C	D	E
S-ILS 36R		850/18	200 (200-1/2)		
S-LOC 36R	1300/24	650 (700-1/2)	1300-1 3/8	650 (700-1 3/8)	
CIRCLING	1300-1	622 (700-1)	1520-2 1/2 842 (900-2 1/2)	1520-2 3/4 842 (900-2 3/4)	1520-3 842 (900-3)
YEPUT FIX MINIMUMS (DME REQUIRED)					
S-LOC 36R	1060/24	410 (400-1/2)	1060/40	410 (400-3/4)	
CIRCLING	1120-1 442 (500-1)	1160-1 482 (500-1)	1520-2 1/2 842 (900-2 1/2)	1520-2 3/4 842 (900-2 3/4)	1520-3 842 (900-3)

HIRL Rwy 8-26, 18L-36R and 18R-36L
REIL Rwy 8, 18R and 36L
TDZ/CL Rwy 36R

FAF to MAP 5.4 NM

Knots	60	90	120	150	180
Min:Sec	5:24	3:36	2:42	2:10	1:48

SC-1, 16 APR 2026 to 14 MAY 2026

SC-1, 16 APR 2026 to 14 MAY 2026