

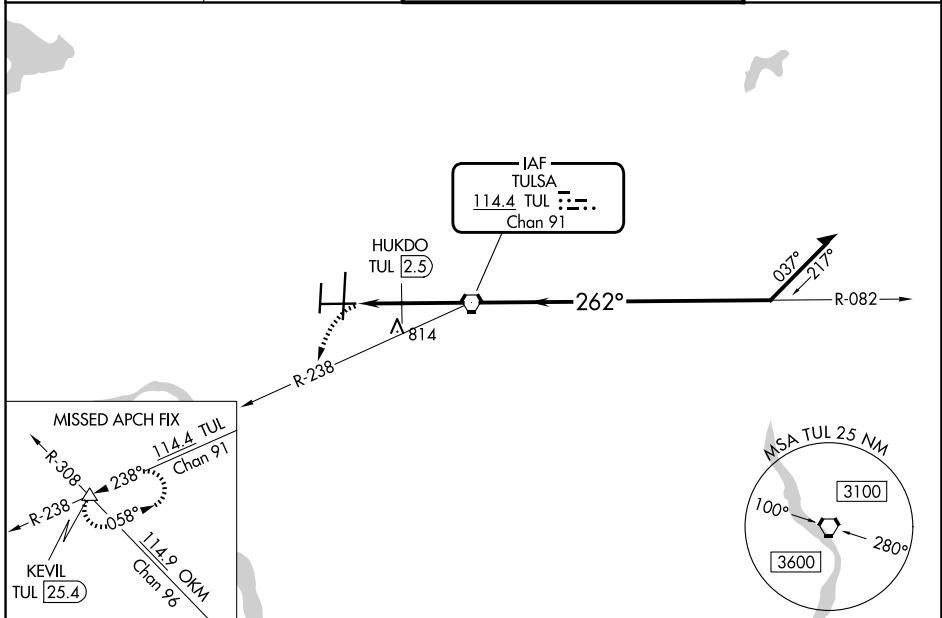
VORTAC TUL <b>114.4</b> Chan 91	APP CRS <b>262°</b>	Rwy Ldg TDZE Apt Elev	<b>7376</b> <b>652</b> <b>678</b>
---------------------------------------	------------------------	-----------------------------	---

# VOR Y or TACAN Y RWY 26

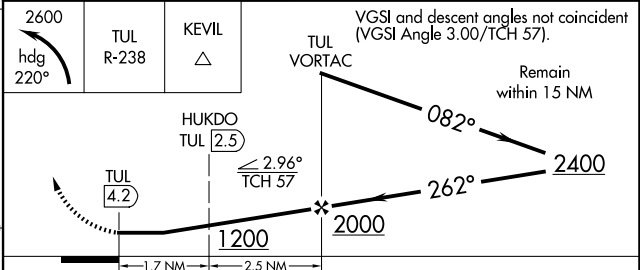
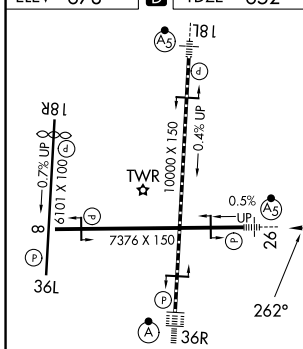
TULSA INTL (TUL)

	Circling NA for Cat E south of Rwy 8-26. VOR Minimums: For inop ALS, increase Cat A/B visibility to 1 SM and Cat E to 1½ SM. HUKDO Minimums: For inop ALS, increase Cat A/B visibility to 1 SM and Cat E to 1½ SM.		MISSED APPROACH: Climbing left turn to 2600 on heading 220° and on TUL VORTAC R-238 to KEVIL INT/TUL 25.4 DME and hold.
--	---	--	---

D-ATIS <b>124.9 377.2</b>	TULSA APP CON <b>124.0 338.3</b>	TULSA TOWER <b>121.2 310.8</b> (08/26, 18L/36R) <b>118.7 257.8</b> (18R/36L)	GND CON <b>121.9 348.6</b>
------------------------------	-------------------------------------	--	-------------------------------



ELEV 678	<b>D</b>	TDZE 652
----------	----------	----------



CATEGORY	A	B	C	D	E
S-26	1200-¾	548 (600-¾)	1200-1¼ 548 (600-1¼)		
CIRCLING	1200-1	522 (600-1)	1520-2½ 842 (900-2½)	1520-2¾ 842 (900-2¾)	1520-3 842 (900-3)
HUKDO FIX MINIMUMS					
S-26	1080-¾ 428 (500-¾)				
CIRCLING	1120-1 442 (500-1)	1160-1 482 (500-1)	1520-2½ 842 (900-2½)	1520-2¾ 842 (900-2¾)	1520-3 842 (900-3)

TDZ/CL Rwy 36R					
HIRL Rws 8-26, 18L-36R and 18R-36L					
REIL Rws 8, 18R and 36L					
FAF to MAP 4.2 NM					
Knots	60	90	120	150	180
Min:Sec	4:12	2:48	2:06	1:41	1:24

# VOR Y or TACAN Y RWY 26

SC-1, 16 APR 2026 to 14 MAY 2026

SC-1, 16 APR 2026 to 14 MAY 2026