

WAAS CH <b>53511</b> <b>W12A</b>	APP CRS <b>118°</b>	Rwy Ldg TDZE Apt Elev	<b>7314</b> <b>23</b> <b>24</b>
--	------------------------	-----------------------------	---------------------------------------

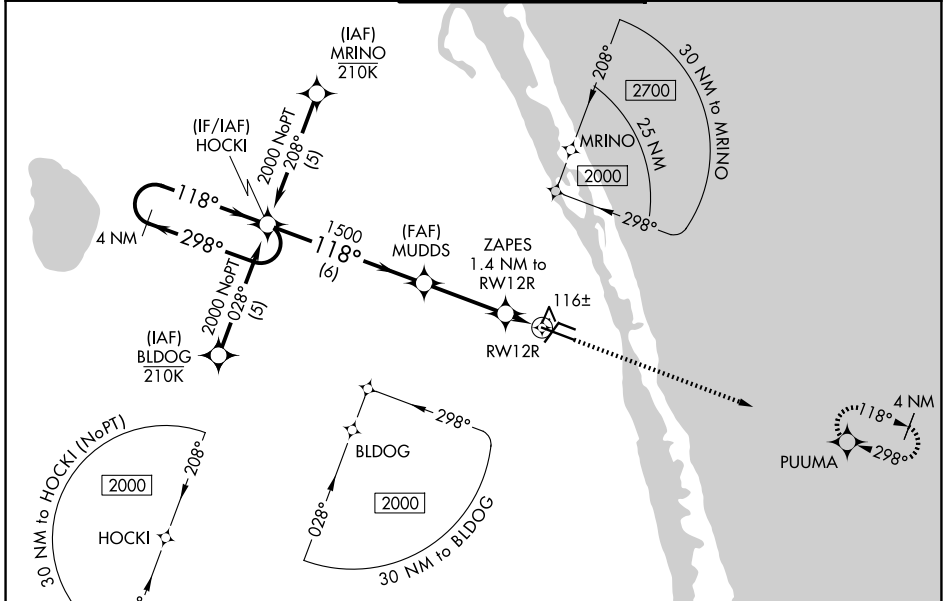
# RNAV (GPS) RWY 12R

VERO BEACH RGNL (VRB)

**⚠** Circling to Rwy 30R NA at night. Baro-VNAV NA when using Fort Pierce altimeter setting. For uncompensated Baro-VNAV systems, LNAV/VNAV NA below 0°C (32°F) or above 54°C (130°F). DME/DME RNP-0.3 NA. When local altimeter setting not received, use Fort Pierce altimeter setting and increase LPV DA to 302 feet; increase LNAV/VNAV DA to 317 feet; increase all MDAs 40 feet and LNAV Cat C/D visibility 1/8 SM and Circling Cat C/D visibility 1/4 SM.

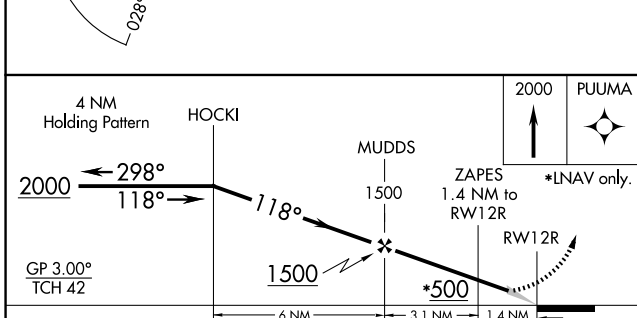
**MISSED APPROACH:**  
Climb to 2000 direct PUUMA and hold.

ATIS <b>120.575</b>	PALM BEACH APP CON <b>123.625 225.4(N)</b>	VERO BEACH TOWER ★ <b>126.3 (CTAF) 0</b>	GND CON <b>127.45</b>	UNICOM <b>122.95</b>
------------------------	---	---	--------------------------	-------------------------

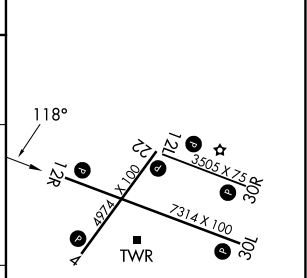


SE-3, 16 APR 2026 to 14 MAY 2026

SE-3, 16 APR 2026 to 14 MAY 2026



ELEV 24	D	TDZE 23
---------	---	---------



CATEGORY	A	B	C	D
LPV DA		279-3/4	256 (300-3/4)	
LNAV/VNAV DA		294-7/8	271 (300-7/8)	
LNAV MDA		380-1	357 (400-1)	
CIRCLING	560-1	536 (600-1)	660-1 3/4 636 (700-1 3/4)	820-2 1/2 796 (800-2 1/2)

MIRL Rwy 4-22, 12R-30L, and 12L-30R  
REIL Rwy 4, 12R, 22 and 30L