

| | | | |
|--|------------------------|---|-------------|
| WAAS CH 69411 W30A | APP CRS 298° | Rwy Ldg TDZE 22 Apt Elev 24 | 7276 |
|--|------------------------|---|-------------|

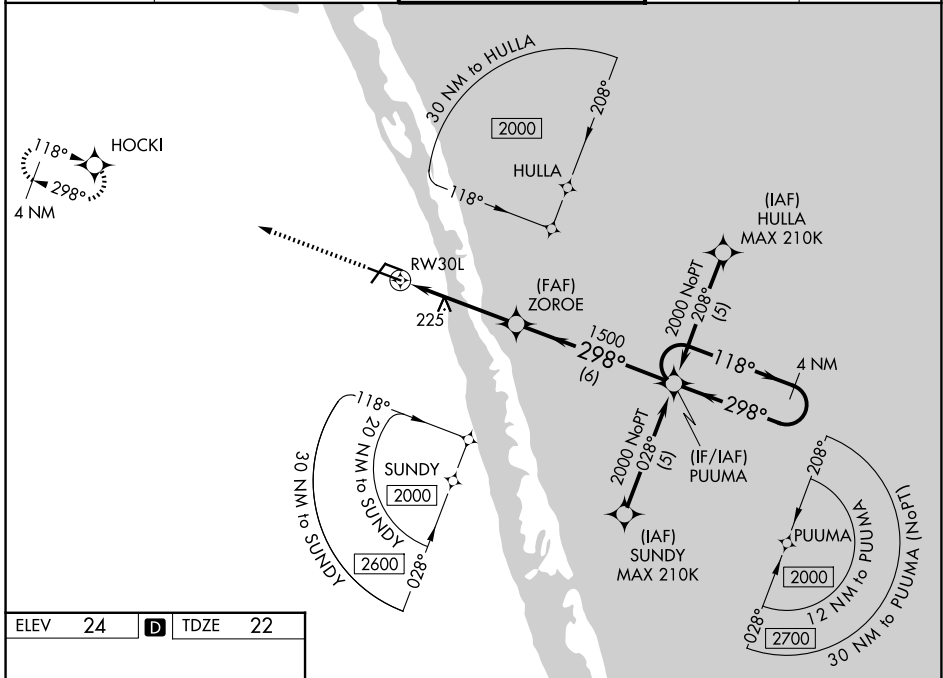
RNAV (GPS) RWY 30L

VERO BEACH RGNL (VRB)

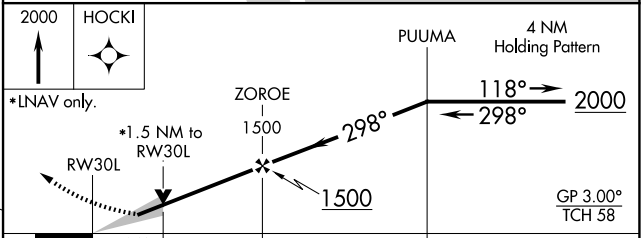
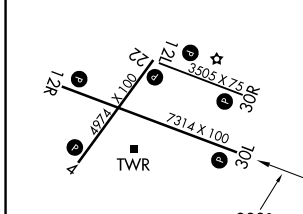
⚠ Circling to Rwy 30R NA at night. Baro-VNAV NA when using Fort Pierce altimeter setting.
⚠ For uncompensated Baro-VNAV systems, LNAV/VNAV NA below 0°C (32°F) or above 54°C (130°F). DME/DME RNP-0.3 NA. VDP NA when using Fort Pierce altimeter setting.
 When local altimeter setting not received, use Fort Pierce altimeter setting and increase all DA 23 feet and all MDA 40 feet and increase LNAV/VNAV all Cats visibility 1/8 mile LNAV Cats C/D and Circling visibility Cats C/D 1/4 mile.

MISSED APPROACH:
 Climb to 2000 direct HOCKI and hold.

| | | | | |
|------------------------|---|---|--------------------------|-------------------------|
| ATIS 120.575 | PALM BEACH APP CON 123.625 225.4(N) | VERO BEACH TOWER ★ 126.3 (CTAF) 0 | GND CON 127.45 | UNICOM 122.95 |
|------------------------|---|---|--------------------------|-------------------------|



| | | |
|----------------|----------|----------------|
| ELEV 24 | D | TDZE 22 |
|----------------|----------|----------------|



| CATEGORY | A | B | C | D |
|--------------|-------|-------------|------------------------------|------------------------------|
| LPV DA | | 222-3/4 | 200 (200-3/4) | |
| LNAV/VNAV DA | | 346-1 | 324 (400-1) | |
| LNAV MDA | 540-1 | 518 (600-1) | 540-1 3/8 | 518 (600-1 3/8) |
| CIRCLING | 560-1 | 536 (600-1) | 660-1 3/4 636 (700-1 3/4) | 820-2 1/2 796 (800-2 1/2) |

MIRL Rwy 4-22, 12R-30L, and 12L-30R **0**
 REIL Rwy 4, 12R, 22 and 30L **0**

SE-3, 16 APR 2026 to 14 MAY 2026

SE-3, 16 APR 2026 to 14 MAY 2026