

| | | | |
|---------------------------------|------------------------|-----------------------------|---|
| WAAS CH 65919 W01A | APP CRS 007° | Rwy Ldg TDZE Apt Elev | 7005 511 516 |
|---------------------------------|------------------------|-----------------------------|---|

RNAV (GPS) RWY 1

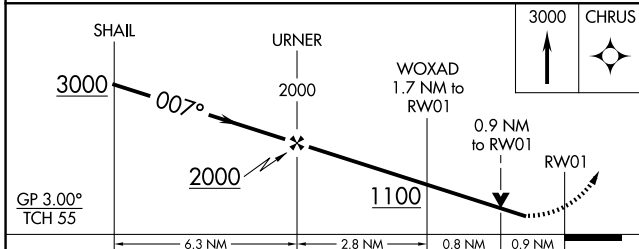
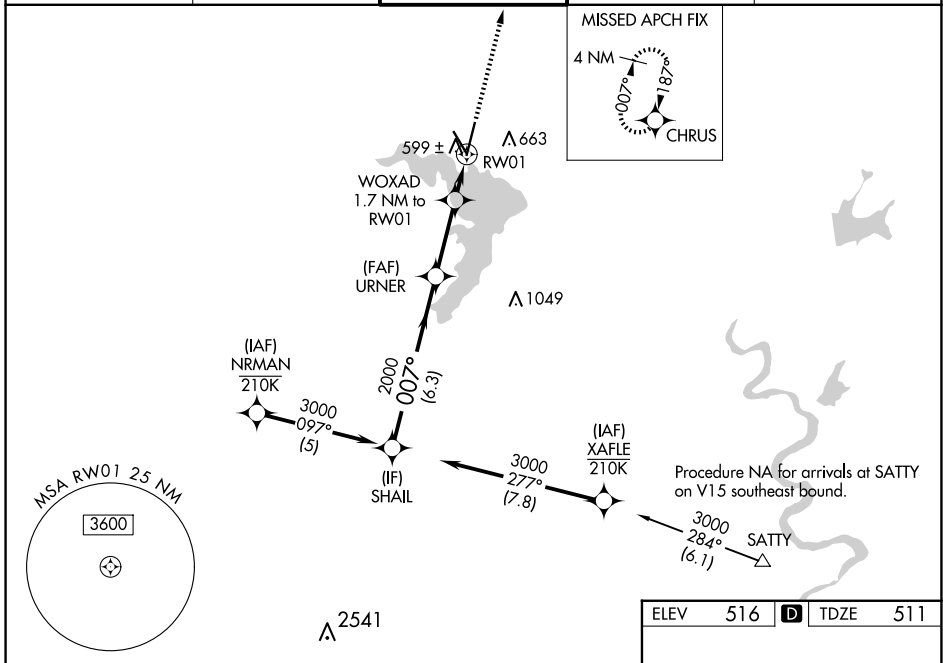
WACO RGNL (ACT)

RNP APCH - GPS.

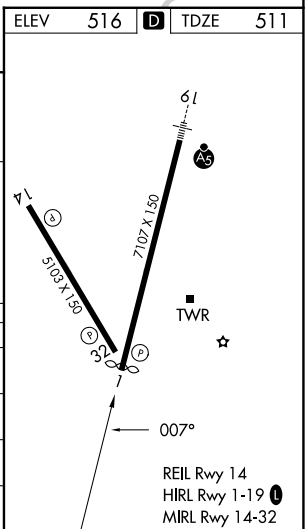
ASR For uncompensated Baro-VNAV systems, LNAV/VNAV NA below -8°C or above 54°C. Baro-VNAV and VDP NA when using PWG altimeter setting. Rwy 1 helicopter visibility reduction below 3/4 SM NA. When local altimeter setting not received, use PWG altimeter setting and increase LPV DA to 792 feet and all visibilities 1/8 SM. Increase LNAV/VNAV DA to 813 feet; increase all MDAs 40 feet and LNAV visibility Cat C/D 1/8 SM, and Circling visibility Cat D 1/4 SM.

MISSED APPROACH:
Climb to 3000 direct
CHRUS and hold.

| | | | | |
|-----------------------|---|---|-------------------------|-------------------------|
| ATIS 123.85 | WACO APP CON ★ 127.65 227.125 | WACO TOWER ★ 119.3 (CTAF) 0 257.8 | GND CON 121.9 | UNICOM 122.95 |
|-----------------------|---|---|-------------------------|-------------------------|



| CATEGORY | A | B | C | D |
|--------------|-------------|-------------|-----------------|-------------|
| LPV DA | | 761-3/4 | 250 (300-3/4) | |
| LNAV/VNAV DA | | 782-7/8 | 271 (300-7/8) | |
| LNAV MDA | | 860-1 | 349 (400-1) | |
| CIRCLING | 940-1 | 980-1 | 1020-1 1/2 | 1160-2 |
| | 424 (500-1) | 464 (500-1) | 504 (600-1 1/2) | 644 (700-2) |



SC-3, 16 APR 2026 to 14 MAY 2026

SC-3, 16 APR 2026 to 14 MAY 2026