

WAAS CH 90299 W20A	APP CRS 202°	Rwy Ldg TDZE Apt Elev	6527 1194 1194
--	------------------------	-----------------------------	---

RNAV (GPS) RWY 20

WALLA WALLA RGNL (ALW)

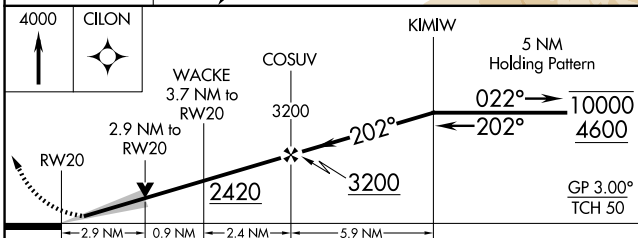
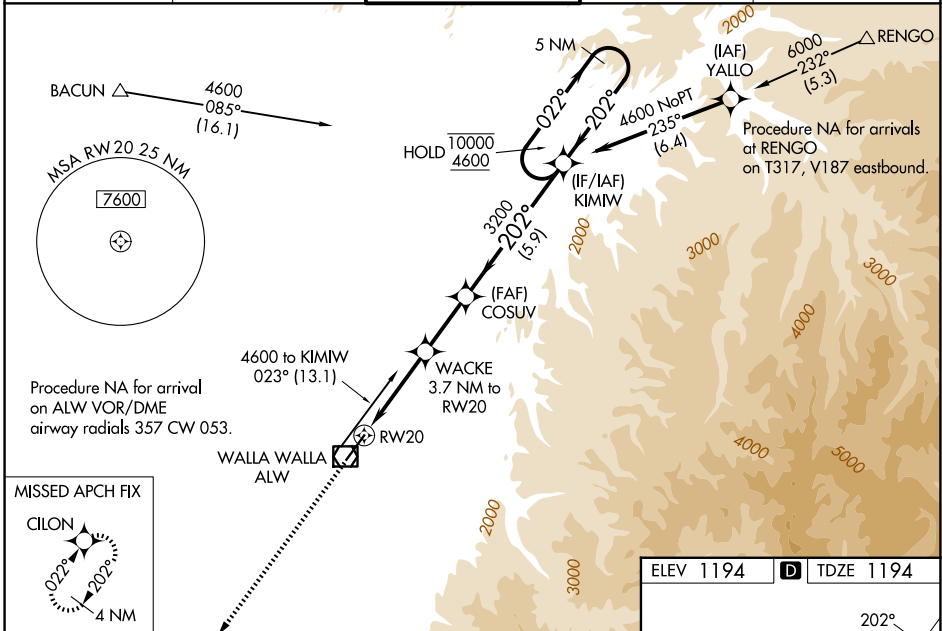
RNP APCH - GPS.

⚠ For uncompensated Baro-VNAV systems, LNAV/VNAV NA below -11°C or above 54°C. For inop ALS, increase LNAV/VNAV visibility to 1% SM. *RVR 1800 authorized with use of FD or AP or HUD to DA.

MALSRL

MISSED APPROACH:
Climb to 4000 direct CILON and hold.

ASOS 135.875	SPOKANE APP CON* 133.15 379.15	WALLA WALLA TOWER* 118.5 (CTAF) 289.4	GND CON 121.6 289.4	UNICOM 122.95
------------------------	--	---	-------------------------------	-------------------------



CATEGORY	A	B	C	D
LPV DA*	1394/24		200 (200-½)	
LNAV/VNAV DA	1773-1¼		579 (600-1¼)	
LNAV MDA	2160/40 966 (1000-¾)	2160/55 966 (1000-1)	2160-2½	966 (1000-2½)
CIRCLING	2160-1¼ 966 (1000-1¼)	2160-1½ 966 (1000-1½)	2160-3 966 (1000-3)	2300-3 1106 (1200-3)

ELEV 1194 **D** TDZE 1194

Diagram of the final approach segment showing the glide path (GP 3.00° TCH 50) and tower location (TWR). The tower is located 6527 ft MSL. A missed approach fix (MALSRL) is shown with a climb to 4000. A 0.6% up slope is indicated.

NW-1, 16 APR 2026 to 14 MAY 2026

NW-1, 16 APR 2026 to 14 MAY 2026