

WAAS CH <b>82125</b> <b>W22A</b>	APP CRS <b>224°</b>	Rwy Ldg TDZE Apt Elev	<b>6001</b> <b>274</b> <b>279</b>
--	------------------------	-----------------------------	---

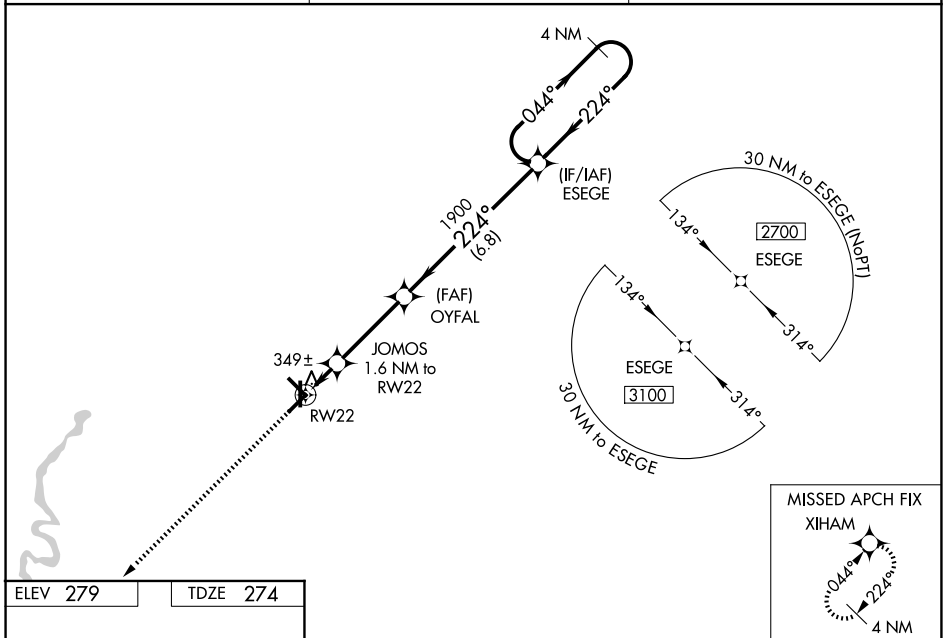
# RNAV (GPS) RWY 22

WALNUT RIDGE RGNL (ARG)

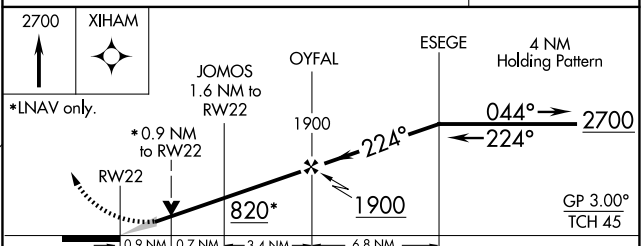
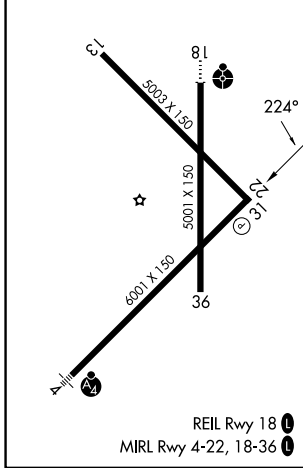
**⚠** Baro-VNAV NA when using Jonesboro altimeter setting. For uncompensated Baro-VNAV systems, LNAV/VNAV NA below -15°C (5°F) or above 42°C (107°F). DME/DME RNP-0.3 NA. VDP NA with Jonesboro altimeter setting. When local altimeter setting not received, use Jonesboro altimeter setting and increase LPV and LNAV/VNAV DA to 578 feet, and all MDAs 60 feet; increase LNAV Cats C/D visibility 1/8 SM and Circling Cat D visibility 1/4 SM.

**MISSED APPROACH:**  
Climb to 2700 direct XIHAM and hold.

AWOS-3PT <b>126.525</b>	MEMPHIS CENTER <b>120.075 289.4</b>	UNICOM <b>122.8 (CTAF)</b> <b>📶</b>
----------------------------	--	--



ELEV 279	TDZE 274
----------	----------



CATEGORY	A	B	C	D
LPV DA		524-1	250 (300-1)	
LNAV/VNAV DA		524-1	250 (300-1)	
LNAV MDA		600-1	326 (400-1)	
CIRCLING	760-1	481 (500-1)	800-1½ 521 (600-1½)	1000-2¼ 721 (800-2¼)

SC-1, 16 APR 2026 to 14 MAY 2026

SC-1, 16 APR 2026 to 14 MAY 2026