

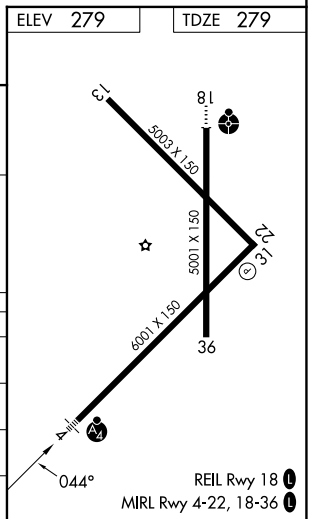
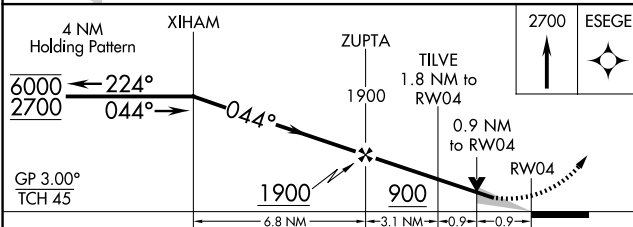
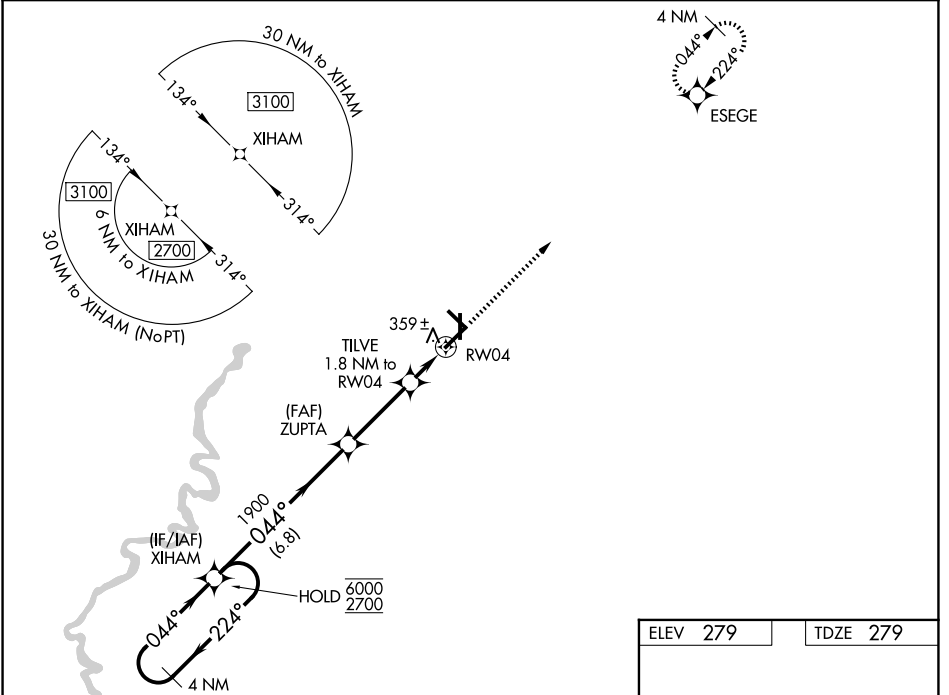
WAAS CH 77825 W04A	APP CRS 044°	Rwy Ldg TDZE Apt Elev	6001 279 279
----------------------------------------	------------------------	-----------------------------	-----------------------------------------

RNAV (GPS) RWY 4

WALNUT RIDGE RGNL (A.R.G)

RNP APCH - GPS.	MALSF	MISSED APPROACH: Climb to 2700 direct ESEGE and hold.
<p>▽ For uncompensated Baro-VNAV systems, LNAV/VNAV NA below -1.5°C or above 54°C. For inop ALS, increase LNAV Cat C/D visibility to 1½ SM. Inop table does not apply to LPV and LNAV/VNAV all Cats.</p>		

AWOS-3PT 126.525	MEMPHIS CENTER 120.075 289.4	UNICOM 122.8 (CTAF) 0
----------------------------	----------------------------------------	---------------------------------



CATEGORY	A	B	C	D
LPV DA		529-¾	250 (300-¾)	
LNAV/VNAV DA		529-¾	250 (300-¾)	
LNAV MDA		620-¾	341 (400-¾)	
CIRCLING	840-1	561 (600-1)	840-1½ 561 (600-1½)	1000-2¼ 721 (800-2¼)

SC-1, 16 APR 2026 to 14 MAY 2026

SC-1, 16 APR 2026 to 14 MAY 2026