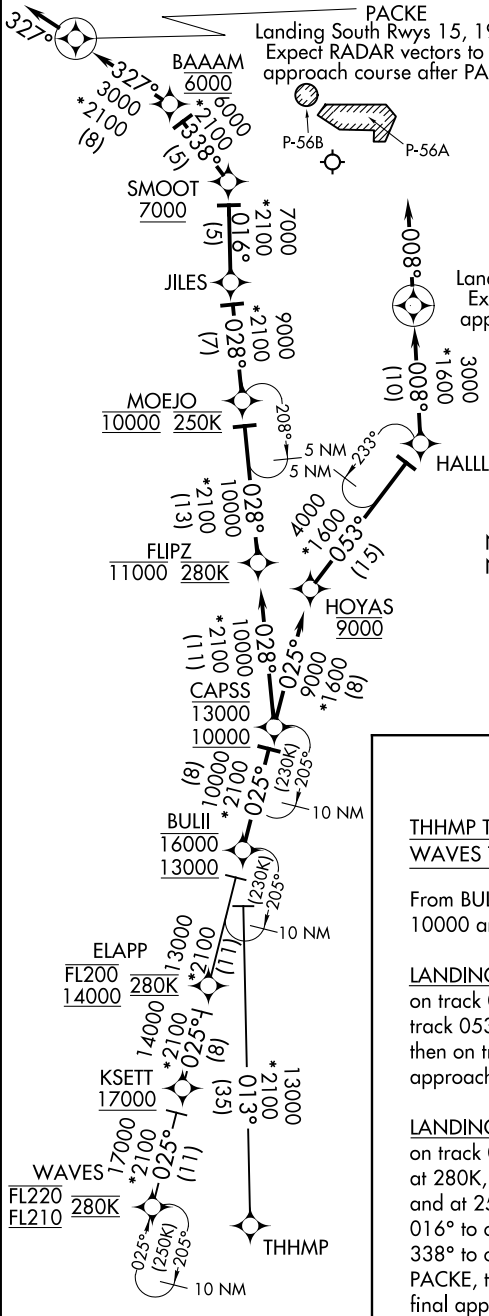


POTOMAC APP CON  
119.85 239.25  
D-ATIS  
132.65

RNAV 1- DME/DME/IRU or GPS.

RADAR required.

**PACKE**  
Landing South Rws 15, 19, 22:  
Expect RADAR vectors to final approach course after PACKE.



**KATR N**  
Landing North Rws 1, 4, 33:  
Expect assigned instrument approach or RADAR vectors.

NOTE: Jet aircraft only.  
NOTE: THHMP transition, ATC assigned only.

NOTE: Chart not to scale.

**ARRIVAL ROUTE DESCRIPTION**

THHMP TRANSITION (THHMP.CAPSS4):  
WAVES TRANSITION (WAVES.CAPSS4):

From BULII on track 025° to cross CAPSS between 10000 and 13000.

LANDING NORTH RUNWAY 1, 4, 33: From CAPSS on track 025° to cross HOYAS at 9000, then on track 053° to HALLL, then on track 008° to KATR N then on track 008°. Expect assigned instrument approach or RADAR vectors to final approach course.

LANDING SOUTH RUNWAY 15, 19, 22: From CAPSS on track 028° to cross FLIPZ at or below 11000 and at 280K, then on track 028° to cross MOEJO at 10000 and at 250K, then on track 028° to JILES, then on track 016° to cross SMOOT at or above 7000, then on track 338° to cross BAAAM at 6000, then on track 327° to PACKE, then on track 327°. Expect RADAR vectors to final approach course.

NE-3, 16 APR 2026 to 14 MAY 2026

NE-3, 16 APR 2026 to 14 MAY 2026