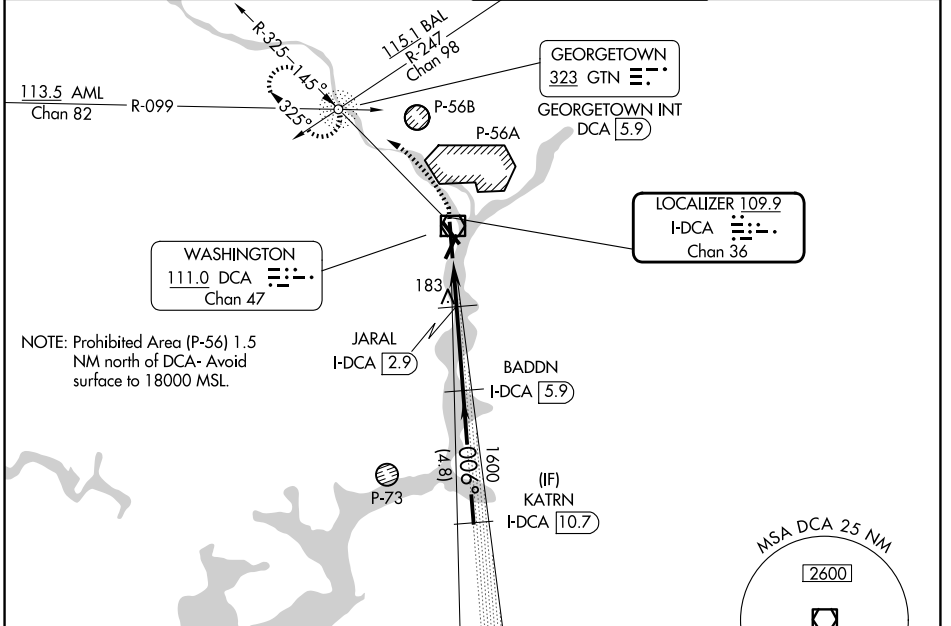


LOC/DME I-DCA 109.9 Chan 36	APP CRS 006°	Rwy Ldg 6869 TDZE 14 Apt Elev 15
---	------------------------	---

COPTER ILS or LOC/DME RWY 1

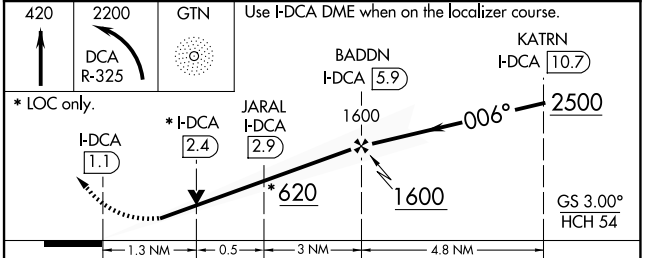
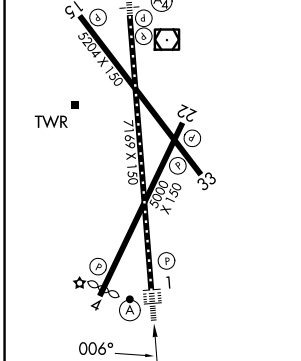
RONALD REAGAN WASHINGTON NTL (DCA)

NA	ALSF-2 	MISSED APPROACH: Climb to 420 then climbing left turn to 2200 on DCA VOR/DME R-325 to GTN NDB/INT/DCA 5.9 DME and hold.	
		D-ATIS 132.65	POTOMAC APP CON 119.85 239.25 (W/S) 124.2 360.8 (E)



NOTE: Prohibited Area (P-56) 1.5 NM north of DCA- Avoid surface to 18000 MSL.

ELEV 15	D	TDZE 14
REIL Rwys 4, 22, 15 and 33 MIRL Rwy 4-22 and 15-33 HIRL Rwys 1-19 TDZ/CL Rwy 1		



CATEGORY	COPTER	
H-ILS 1	114/12	100 (100-1/4)
H-LOC 1	480/24	466 (500-1/2)
H-ILS 1	CAT II RA 106	

COPTER ILS CATEGORY II - SPECIAL AIRCREW & AIRCRAFT CERTIFICATION REQUIRED

FAF to MAP 4.8 NM					
Knots	45	60	75	90	105
Min:Sec	6:24	4:48	3:50	3:12	2:45

NE-3, 16 APR 2026 to 14 MAY 2026

NE-3, 16 APR 2026 to 14 MAY 2026