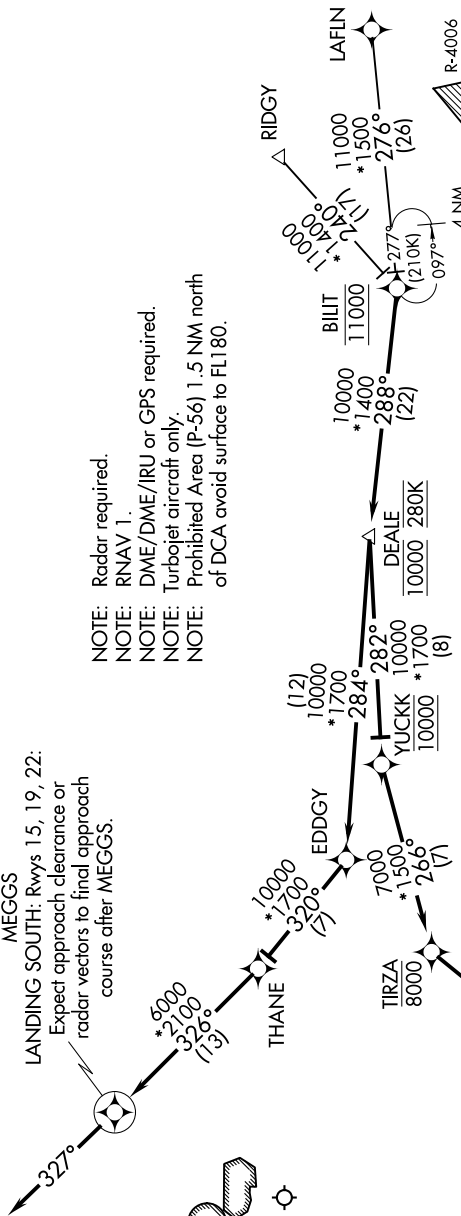
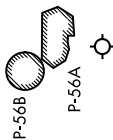


POTOMAC\_APP CON  
124.55 317.425  
D-ATIS  
132.65

MEGGS  
LANDING SOUTH: Rwy's 15, 19, 22:  
Expect approach clearance or  
radar vectors to final approach  
course after MEGGS.

NOTE: Radar required.  
NOTE: RNAV 1.  
NOTE: DME/DME/IRU or GPS required.  
NOTE: Turbojet aircraft only.  
NOTE: Prohibited Area (P-56) 1.5 NM north  
of DCA avoid surface to FL180.

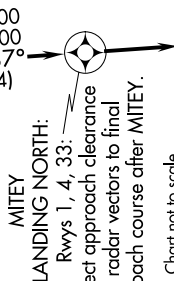


ARRIVAL ROUTE DESCRIPTION

LAFIN TRANSITION (LAFIN.DEALE3):  
RIDGY TRANSITION (RIDGY.DEALE3):

From BILIT on track 288° to cross DEALE at 10000 and at 280K.

LANDING NORTH RWYS 1, 4, 33: From DEALE on track 282° to cross YUCKK at 10000, then on track 266° to cross TIRZA at or below 8000, then on track 230° to cross HITEK at 7000, then on track 187° to MITEY, then on heading 187°. Expect radar vectors to final approach course.  
LANDING SOUTH RWYS 15, 19, 22: From DEALE on track 284° to EDDGY, then on track 320° to THANE, then on track 326° to MEGGS, then on heading 327°. Expect radar vectors to final approach course.



MITEY  
LANDING NORTH:  
Rwys 1, 4, 33:  
Expect approach clearance  
or radar vectors to final  
approach course after MITEY.

NOTE: Chart not to scale.