

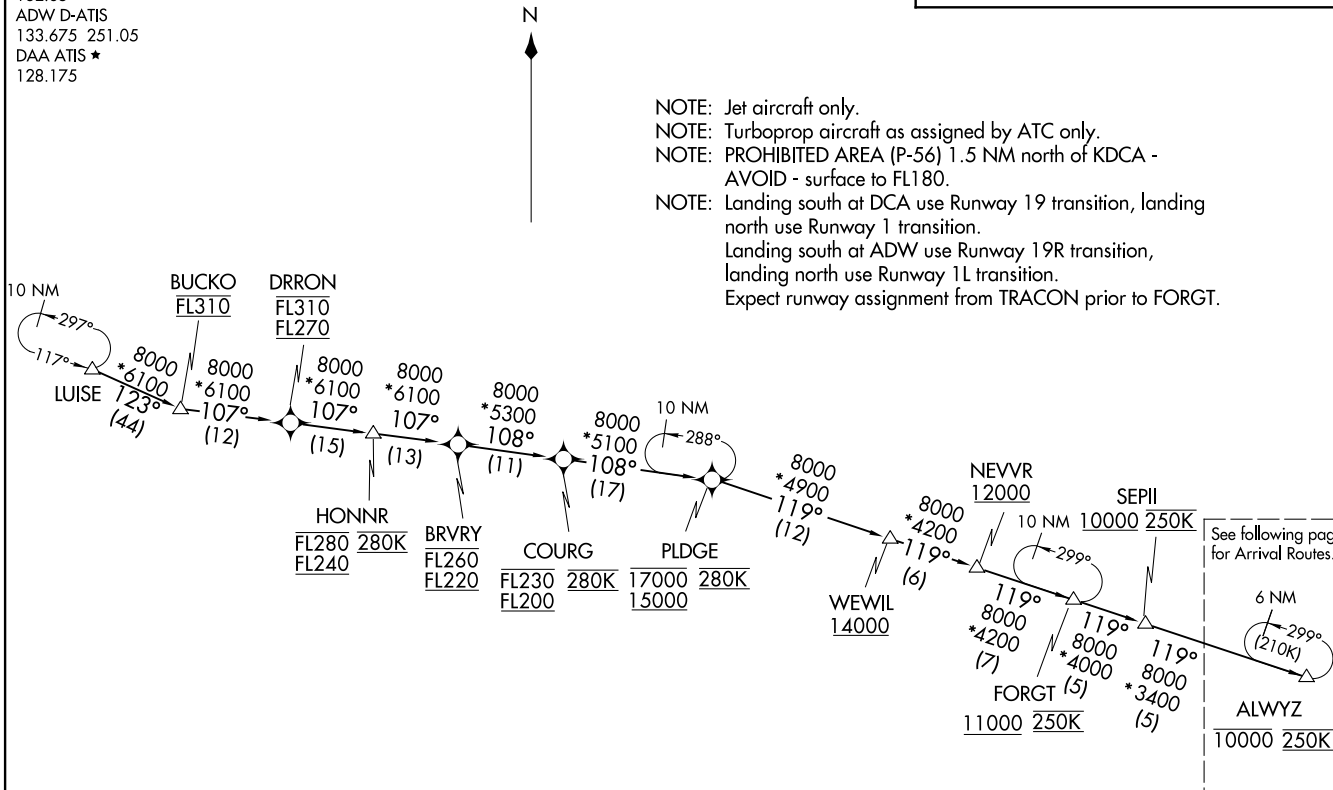
FRDMM SIX ARRIVAL (RNAV) Transition Routes
(ALWYZ.FRDMM6) 16MAY24

POTOMAC APP CON
118.675 323.175
DCA D-ATIS
132.65
ADW D-ATIS
133.675 251.05
DAA ATIS ★
128.175

RNAV-1 DME/DME/IRU or GPS.
RADAR required.

BUCKO TRANSITION (BUCKO.FRDMM6):
LUISE TRANSITION (LUISE.FRDMM6):

NOTE: Jet aircraft only.
NOTE: Turboprop aircraft as assigned by ATC only.
NOTE: PROHIBITED AREA (P-56) 1.5 NM north of KDCA - AVOID - surface to FL180.
NOTE: Landing south at DCA use Runway 19 transition, landing north use Runway 1 transition.
Landing south at ADW use Runway 19R transition, landing north use Runway 1L transition.
Expect runway assignment from TRACON prior to FORGT.



See following page for Arrival Routes.
6 NM
299°
(210K)
ALWYZ
10000 250K

(CONTINUED ON FOLLOWING PAGE)

NOTE: Chart not to scale.

WASHINGTON, DC

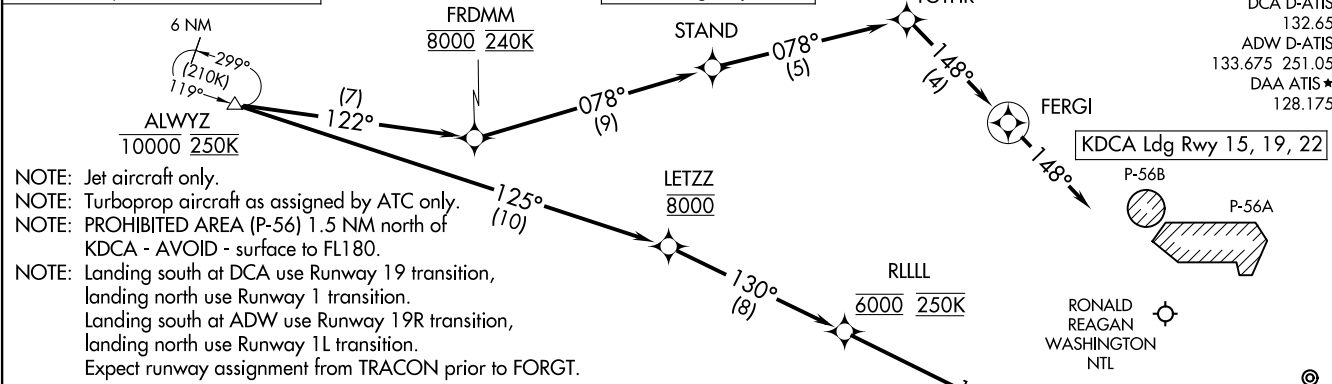
(ALWYZ.FRDMM6) 24137

AL-443 (FAA)

WASHINGTON, DC

FRDMM SIX ARRIVAL (RNAV) Arrival Routes
 (ALWYZ,FRDMM6) 16MAY24

RNAV-1 DME/DME/IRU or GPS.
 RADAR required.



POTOMAC APP CON
 118.675 323.175
 DCA D-ATIS
 132.65
 ADW D-ATIS
 133.675 251.05
 DAA ATIS ★
 128.175

NOTE: Jet aircraft only.
 NOTE: Turboprop aircraft as assigned by ATC only.
 NOTE: PROHIBITED AREA (P-56) 1.5 NM north of KDCA - AVOID - surface to FL180.
 NOTE: Landing south at DCA use Runway 19 transition, landing north use Runway 1 transition.
 NOTE: Landing south at ADW use Runway 19R transition, landing north use Runway 1L transition.
 Expect runway assignment from TRACON prior to FORGT.

ARRIVAL ROUTE DESCRIPTION

LANDING ADW RUNWAY 11L/R: From ALWYZ on track 125° to cross LETZZ at 8000, then on track 130° to cross RLLLL at 6000 and at 250K, then on track 131° to VCTRY, then on track 189° to HEROO, then on track 189°. Expect RADAR vectors to final approach course.

LANDING ADW RUNWAY 19L/R: From ALWYZ on track 122° to cross FRDMM at 8000 and at 240K, then on track 078° to STAND. Expect RADAR vectors to final approach course.

LANDING DCA RUNWAY 1, 4, 33: From ALWYZ on track 125° to cross LETZZ at 8000, then on track 130° to cross RLLLL at 6000 and at 250K, then on track 131° to VCTRY, then on track 189° to HEROO, then on track 189°. Expect RADAR vectors to final approach course.

LANDING DCA RUNWAY 15, 19, 22: From ALWYZ on track 122° to cross FRDMM at 8000 and at 240K, then on track 078° to STAND, then on track 078° to TGTHR, then on track 148° to FERGI, then on track 148°. Expect RADAR vectors to final approach course.

LANDING DAA: From ALWYZ on track 125° to cross LETZZ at 8000, then on track 130° to cross RLLLL at 6000 and at 250K, then on track 131° to VCTRY, then on track 189° to HEROO, then on track 189°. Expect RADAR vectors to final approach course.

KDCA Ldg Rwy 1, 4, 33
 KADW Ldg Rwy 1 L/R
 Ldg KDA A

NOTE: Chart not to scale.

(ALWYZ,FRDMM6) 24137
 AL-443 (FAA)
 FRDMM SIX ARRIVAL (RNAV) Arrival Routes

WASHINGTON, DC