

LOC/DME I-ASO <b>109.9</b> Chan <b>36</b>	APP CRS <b>149°</b>	Rwy Ldg TDZE <b>13</b> Apt Elev <b>14</b>	<b>6869</b>
---	------------------------	---	-------------

# LDA Y RWY 19

RONALD REAGAN WASHINGTON NTL (DCA)

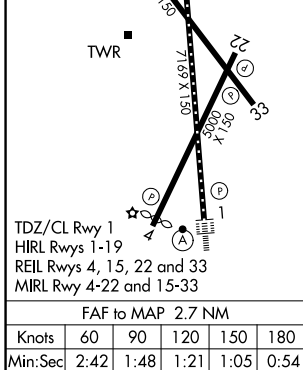
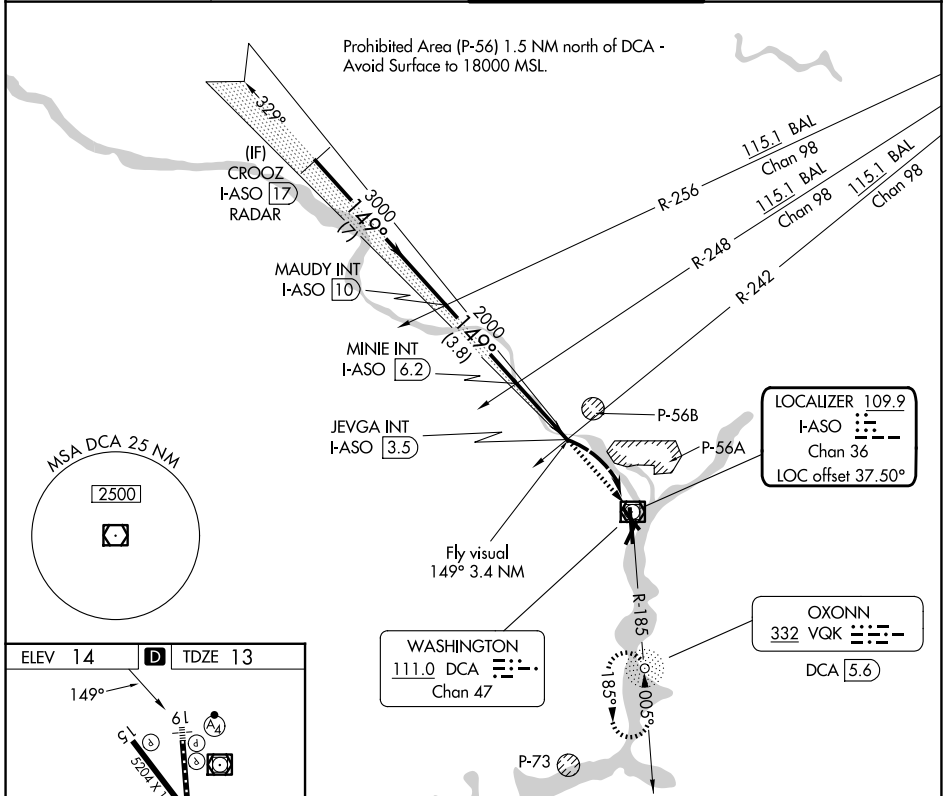
RADAR required for procedure entry. ADF or DME required.

**⚠** Circling NA northeast of Rwy 15-33. Inop table does not apply.  
**⚠** Rwy 19 helicopter visibility reduction below 1 SM NA.

MALSF

MISSED APPROACH: Climb to 1800 direct DCA VOR/DME and on DCA VOR/DME R-185 to OXONN NDB/DCA 5.6 DME and hold.

D-ATIS <b>132.65</b>	POTOMAC APP CON <b>119.85 239.25</b> (W/S) <b>124.2 360.8</b> (E)	WASHINGTON TOWER <b>119.1 257.6</b>	GND CON <b>121.7 257.6</b>
-------------------------	---	--	-------------------------------



ELEV 14	<b>D</b>	TDZE 13		
<p>149°</p> <p>61</p> <p>5024 X 150</p> <p>7167 X 150</p> <p>5003 X 150</p> <p>22</p> <p>33</p> <p>1</p> <p>TWR</p> <p>TDZ/CL Rwy 1 HIRL Rwys 1-19 REIL Rwys 4, 15, 22 and 33 MIRL Rwy 4-22 and 15-33</p> <p>FAF to MAP 2.7 NM</p>				
CROOZ I-ASO 17 RADAR	MAUDY INT I-ASO 10	MINIE INT I-ASO 6.2	JEVGA INT I-ASO 3.5	Fly visual 149° 3.4 NM
3000	3000	2000		
<p>7 NM      3.8 NM      2.7 NM      3.4 NM</p>				
1800	DCA	DCA R-185	VQK	
CATEGORY	A	B	C	D
S-LDA 19		1100-3	1087 (1100-3)	
CIRCLING		1100-3	1086 (1100-3)	

NE-3, 16 APR 2026 to 14 MAY 2026

NE-3, 16 APR 2026 to 14 MAY 2026