

LOC/DME I-VVWH 111.35 Chan 50 (Y)	APP CRS 147°	Rwy Ldg 6869 TDZE 13 Apt Elev 14
---	------------------------	---

LDA Z RWY 19

RONALD REAGAN WASHINGTON NTL (DCA)

DME required. RADAR required for procedure entry.

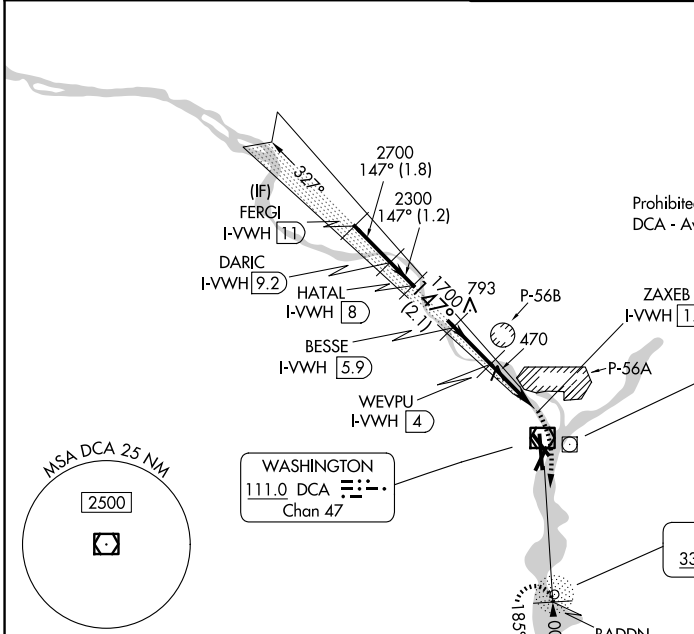
MALSF MISSED APPROACH: Climbing right turn to 3000 on DCA VOR/DME R-185 to BADDN/DCA VOR/DME 5.9 DME and hold, continue climb-in-hold to 3000.

Rwy 19 helicopter visibility reduction below 1 SM NA.
Circling NA northeast of Rwy 15-33. Inop table does not apply.

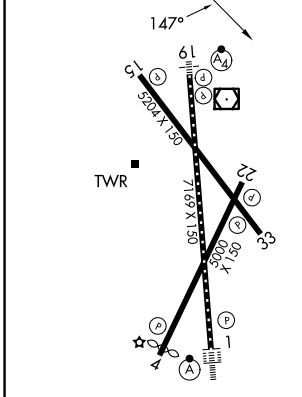
D-ATIS 132.65	POTOMAC APP CON 119.85 239.25 (W/S) 124.2 360.8 (E)	WASHINGTON TOWER 119.1 257.6	GND CON 121.7 257.6
-------------------------	---	--	-------------------------------

ALTERNATE MISSED APCH FIX

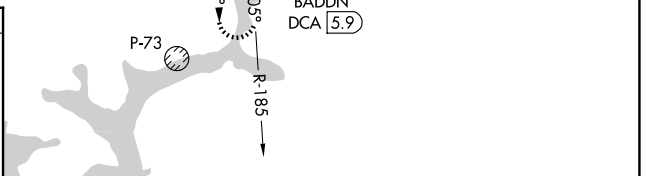
OXONN
VQK **332**



ELEV 14	D	TDZE 13
---------	----------	---------



REIL Rwy 4, 15, 22 and 33
TDZ/CL Rwy 1
HIRL Rwy 1-19
MIRL Rwy 4-22 and 15-33



FERGI I-VVWH 11	DARIC I-VVWH 9.2	HATAL I-VVWH 8	BESSE I-VVWH 5.9	WEVPU I-VVWH 4	ZAXEB I-VVWH 1.6	3000	BADDN DCA 5.9
1.8 NM						0.9 NM	

CATEGORY	A	B	C	D
S-19	780/50 767 (800-1)	780/55 767 (800-1)	780-2½ 767 (800-2½)	767 (800-2½)
CIRCLING	780-1 766 (800-1)	780-1¼ 766 (800-1¼)	840-2½ 826 (900-2½)	900-3 886 (900-3)

NE-3, 16 APR 2026 to 14 MAY 2026

NE-3, 16 APR 2026 to 14 MAY 2026