

NUMMY THREE ARRIVAL

WASHINGTON, DC

NE-3, 16 APR 2026 to 14 MAY 2026

ARRIVAL ROUTE DESCRIPTION

BUCKO TRANSITION (BUCKO.NUMMY3): From over BUCKO on ESL R-282 to ESL VOR/DME, then on ESL R-103 to DRUZZ, then on AML R-297 to AML VOR/DME.

Landing DCA Rwy 1, 4, 33, ADW Rwys 1L, 1R, and DAA: From over AML VOR/DME on AML VOR/DME R-130 to cross NUMMY at 6000, then on heading 187°, expect radar vectors to final approach course.

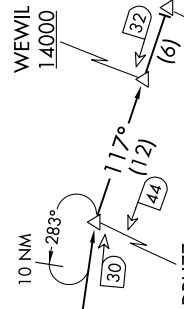
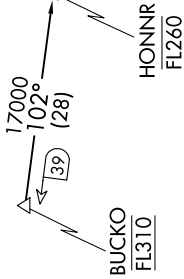
Landing DCA Rwys 15, 19, 22 and ADW Rwys 19L, 19R: Depart AML VOR/DME on heading 070°, expect radar vectors to final approach course.

POTOMAC APP CON
118.675 323.175
DCA D-ATIS 132.65
KADW D-ATIS
133.675 251.05
*KDAA ATIS
128.175

MORGANTOWN
111.6 MGW
Chan 53

KESSEL
110.8 ESL
Chan 45

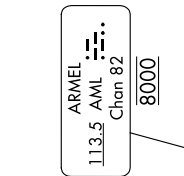
FL230



MARTINSBURG
112.1 MRB
Chan 58



ARMEL
113.5 AML
Chan 82



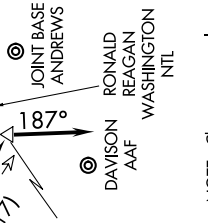
EKINS
114.2 EKN
Chan 89



NOTE: DME and RADAR required.
NOTE: Turboprops only; Turboprops as assigned by ATC only.
NOTE: Aircraft use DCA, ADW, or DAA ATIS to determine direction of landing prior to ALWYZ.
NOTE: PROHIBITED AREA (P-56) north of DCA - AVOID - surface 18000.
NOTE: Maintain last ATC assigned altitude until cleared to descend via the NUMMY THREE, then comply with altitude restrictions as published.



CASANOVA
116.3 CSN
Chan 110



NOTE: Chart not to scale.

NUMMY THREE ARRIVAL

WASHINGTON, DC

NE-3, 16 APR 2026 to 14 MAY 2026