


APP CRS	Rwy Ldg	<b>6869</b>
<b>007°</b>	TDZE	<b>14</b>
	Apt Elev	<b>14</b>

# RNAV (RNP) RWY 1

RONALD REAGAN WASHINGTON NTL (DCA)

**▽** For uncompensated Baro-VNAV systems, procedure NA below -10°C (14°F) or above 48°C (120°F). RF required. GPS required. Missed approach requires RNP less than 1.0. For inop ALS, increase RNP 0.30 all Cats visibility to 1¼ mile.

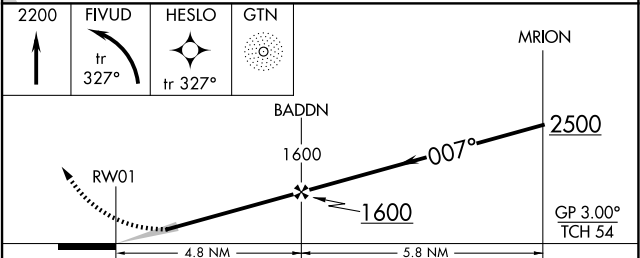
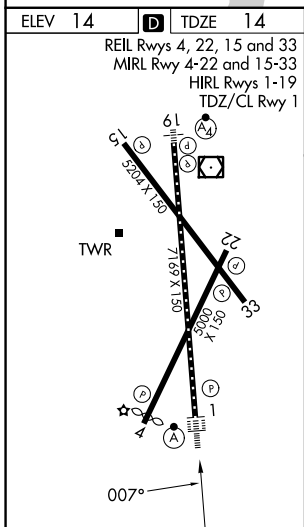
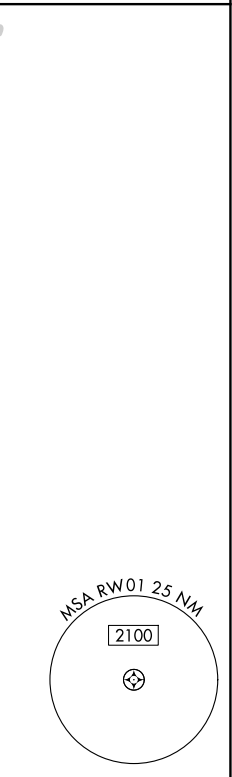
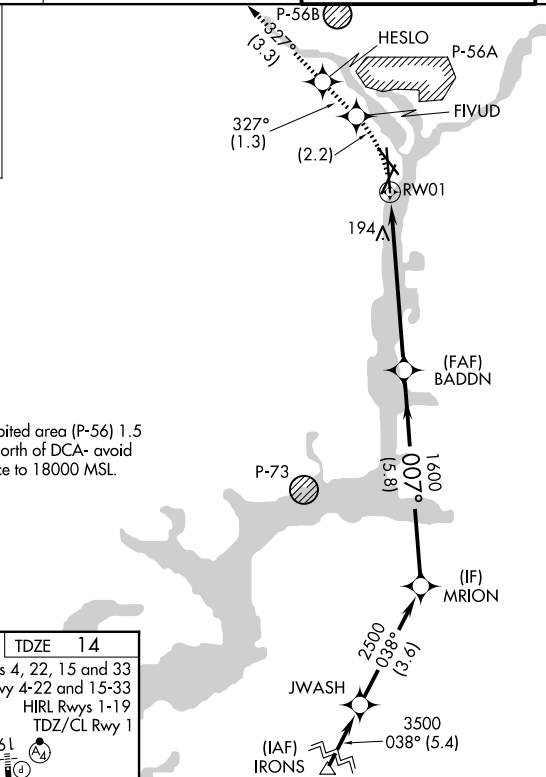
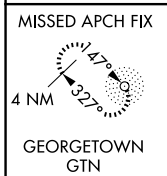
**ALSF-2**  
 MISSED APPROACH: (Do not exceed 185K until FIVUD) Climb to 2200 left turn to FIVUD and on track 327° to HESLO and on track 327° to GTN NDB and hold.

D-ATIS  
**132.65**

POTOMAC APP CON  
**119.85 239.25** (W/S)  
**124.2 360.8** (E)

WASHINGTON TOWER  
**119.1 257.6**

GND CON  
**121.7 257.6**



CATEGORY	A	B	C	D
RNP 0.30 DA	552/60 538 (600-1¼)			

**AUTHORIZATION REQUIRED**