

APP CRS	Rwy Ldg	6869
187°	TDZE	13
	Apt Elev	14

RNAV (RNP) Z RWY 19

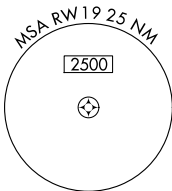
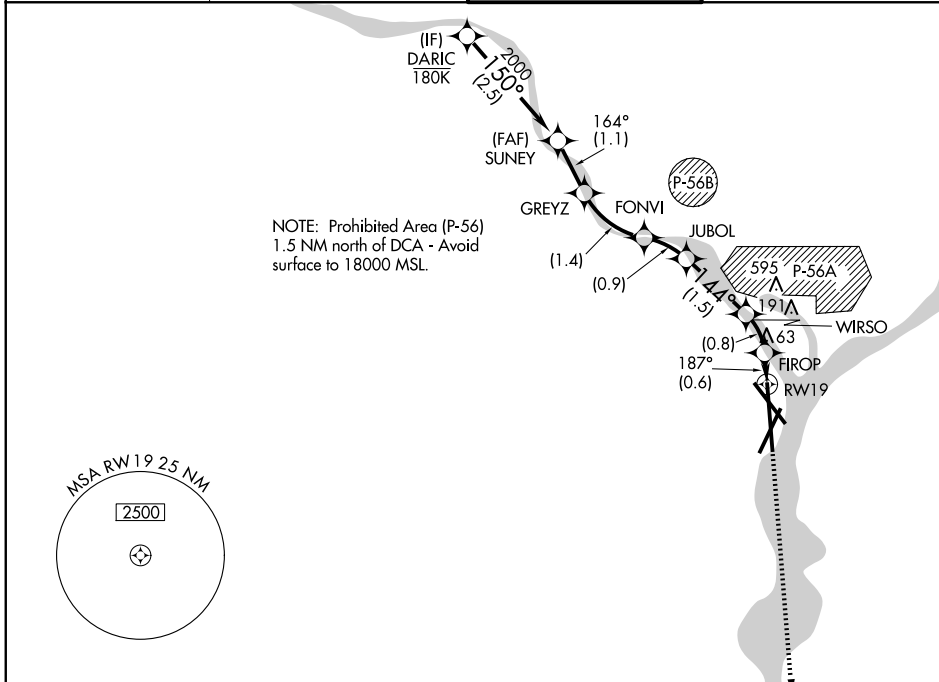
RONALD REAGAN WASHINGTON NTL (DCA)

RNP AR APCH - GPS.

MALSF MISSED APPROACH: Climb to 3000 on the final approach track to RW19 then direct BADDN and hold, continue climb-in-hold to 3000.

Inop table does not apply. For uncompensated Baro-VNAV systems, procedure NA below -8°C or above 54°C.

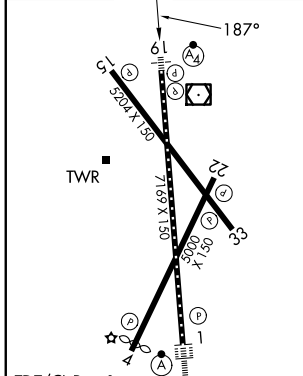
D-ATIS 132.65	POTOMAC APP CON 119.85 239.25 (W/S) 124.2 360.8 (E)	WASHINGTON TOWER 119.1 257.6	GND CON 121.7 257.6
-------------------------	---	--	-------------------------------



NE-3, 16 APR 2026 to 14 MAY 2026

NE-3, 16 APR 2026 to 14 MAY 2026

ELEV 14	D	TDZE 13
---------	----------	---------



TDZ/CL Rwy 1
HIRL Rws 1-19
MIRL Rwy 4-22 and 15-33
REIL Rws 4, 22, 15 and 33

DARIC	SUNEY	GREYZ	FONVI	JUBOL	WIRSO	FIROP	BADDN
2700	2000	1666	1226	954	492	241	3000
187°	164°	144°	187°	189°	187°	189°	189°
2.5 NM	1.1 NM	1.4 NM	0.9 NM	1.5 NM	0.8 NM	0.6 NM	4 NM
CATEGORY	A	B	C	D			
RNP 0.11 DA	491/60		478 (500-1¼)				
RNP 0.30 DA	550-1½		537 (600-1½)				

AUTHORIZATION REQUIRED