

RNAV (GPS) Y RWY 19

RONALD REAGAN WASHINGTON NTL (DCA)

APP CRS	Rwy Ldg	6869
187°	TDZE	13
	Apt Elev	14

RNP APCH - GPS.
RADAR required.
Rwy 19 helicopter visibility reduction below 3/4 SM NA. Inop table does not apply.

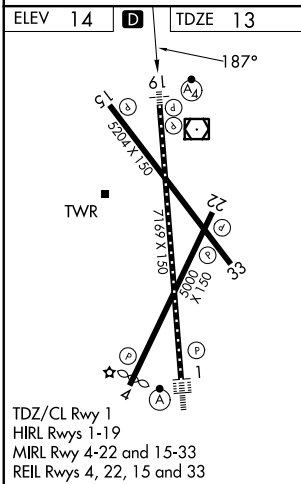
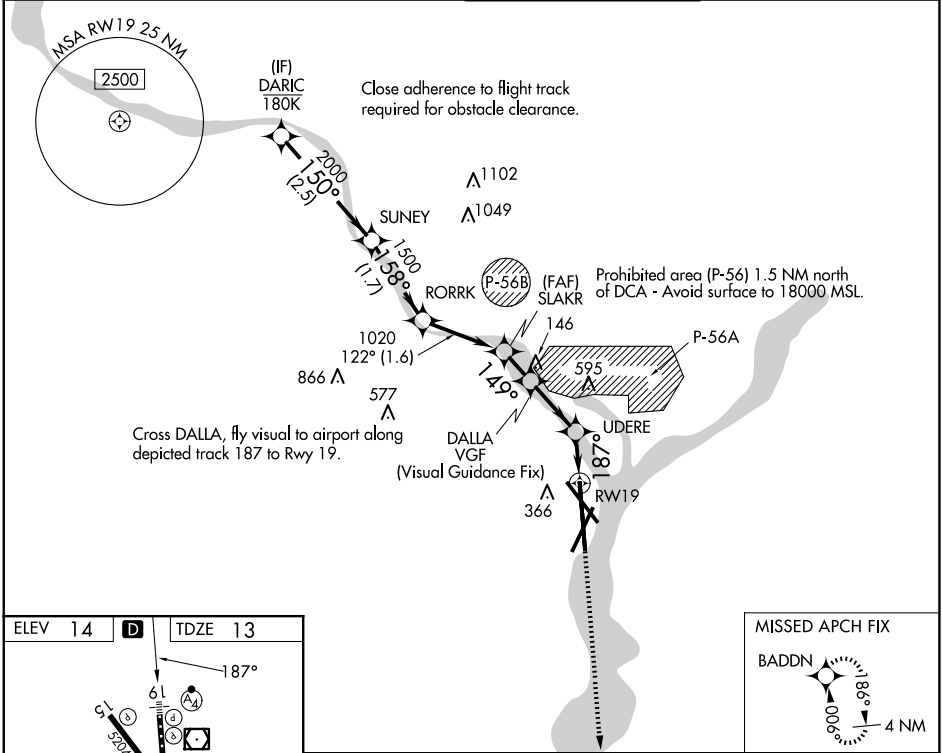
MALSF	MISSED APPROACH: (Do not exceed 165K until Rwy 19) Climb to 3000 on FMS lateral path to Rwy 19, then direct BADDN and hold, continue climb-in-hold to 3000. If unable to follow the FMS lateral path, climb to 3000 and turn to heading 187° direct BADDN and hold, continue climb-in-hold to 3000.
-------	---

D-ATIS	132.65
--------	---------------

POTOMAC APP CON	119.85 239.25 (W/S)
	124.2 360.8 (E)

WASHINGTON TOWER	119.1 257.6
------------------	--------------------

GND CON	121.7 257.6
---------	--------------------



3000	FMS Lateral to RWY19	BADDN	*Check altitude. Turns required in the visual segment.			
DARIC	SUNEY	RORRK	SLAKR	DALLA	UDERE	RWY19
2700	2000	1500	1020	*780	*373	
	150°	158°	122°	149°	3.16°	
	2.5 NM	1.7 NM	1.6 NM	0.7 NM	1.2 NM	0.9 NM
CATEGORY	A	B	C	D		
LNVA MDA	780-2½			767 (800-2½)		

NE-3, 16 APR 2026 to 14 MAY 2026

NE-3, 16 APR 2026 to 14 MAY 2026