

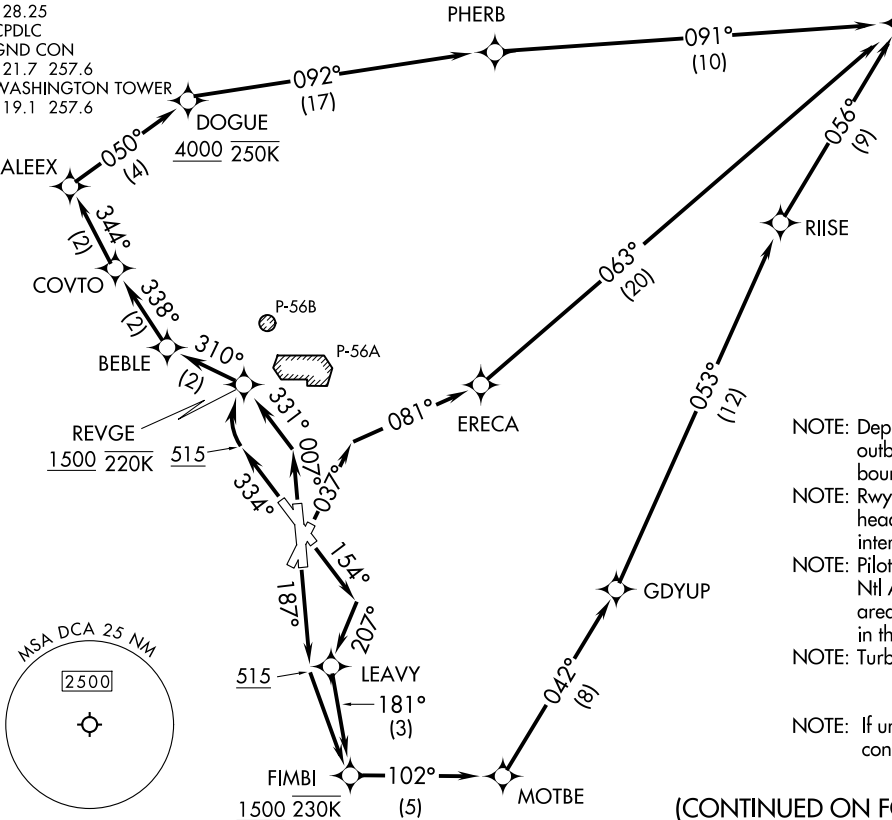
SOOKI SIX DEPARTURE (RNAV)
(SOOKI6; SOOKI) 22JAN26

RONALD REAGAN WASHINGTON NTL (DCA)
WASHINGTON, DC

POTOMAC DEP CON
125.65 348.725
D-ATIS
132.65
CLNC DEL
128.25
CPDLC
GND CON
121.7 257.6
WASHINGTON TOWER
119.1 257.6

RNAV 1 - DME/DME/IRU or GPS.
RADAR required.

**TOP ALTITUDE:
5000**



TAKEOFF MINIMUMS:

Rwy 1: Standard with minimum climb of 825' per NM to 600.
Rwys 4, 15, 19: Standard with minimum climb of 500' per NM to 515.
Rwy 33: Standard with minimum climb of 540' per NM to 640.

NOTE: Departing Rwy 1 requires expeditious intercept of outbound course to ensure avoidance of P-56 boundary.

NOTE: Rwy 1 departures remain clear of P-56, climb on heading 007°, turn left as practical to intercept course 331° to REVEGE.

NOTE: Pilots shall comply with Ronald Reagan Washington Ntl Airport noise abatement and prohibited area (P-56) avoidance procedures as defined in the Chart Supplement Special Notices.

NOTE: Turbojet only.

NOTE: If unable to accept climb rate, advise ATC on initial contact.

(CONTINUED ON FOLLOWING PAGE)

NOTE: Chart not to scale.

SOOKI SIX DEPARTURE (RNAV)
(SOOKI6; SOOKI) 260322

AL-443 (FAA)

RONALD REAGAN WASHINGTON NTL (DCA)
WASHINGTON, DC



DEPARTURE ROUTE DESCRIPTION

TAKEOFF RUNWAY 1: Climb on heading 007° to intercept course 331° to REVGE, cross REVGE at or above 1500 and at or below 220K, then on track 310° to BEBLE, then on track 338° to COVTO, then on track 344° to ALEEX, then on track 050° to DOGUE, cross DOGUE at or above 4000 and at or below 250K, then on track 092° to PHERB, then on track 091° to SOOKI, cross SOOKI at or above 5000, thence....

TAKEOFF RUNWAY 4: Climb on heading 037° to intercept course 081° to ERECA, then on track 063° to SOOKI, cross SOOKI at or above 5000, thence....

TAKEOFF RUNWAY 15: Climb on heading 154° to intercept course 207° to LEAVY, then on track 181° to FIMBI, cross FIMBI at or above 1500 and at or below 230K, then on track 102° to MOTBE, then on track 042° to GDYUP, then on track 053° to RIISE, then on track 056° to SOOKI, cross SOOKI at or above 5000, thence....

TAKEOFF RUNWAY 19: Climb on heading 187° to 515, then direct FIMBI, cross FIMBI at or above 1500 and at or below 230K, then on track 102° to MOTBE, then on track 042° to GDYUP, then on track 053° to RIISE, then on track 056° to SOOKI, cross SOOKI at or above 5000, thence....

TAKEOFF RUNWAY 33: Climb on heading 334° to 515, then direct REVGE, cross REVGE at or above 1500 and at or below 220K, then on track 310° to BEBLE, then on track 338° to COVTO, then on track 344° to ALEEX, then on track 050° to DOGUE, cross DOGUE at or above 4000 and at or below 250K, then on track 092° to PHERB, then on track 091° to SOOKI, cross SOOKI at or above 5000, thence....

...on SWANN transition. Maintain 5000. Expect filed altitude 10 minutes after departure.

SWANN TRANSITION (SOOKI6.SWANN)

NE-3, 16 APR 2026 to 14 MAY 2026

NE-3, 16 APR 2026 to 14 MAY 2026