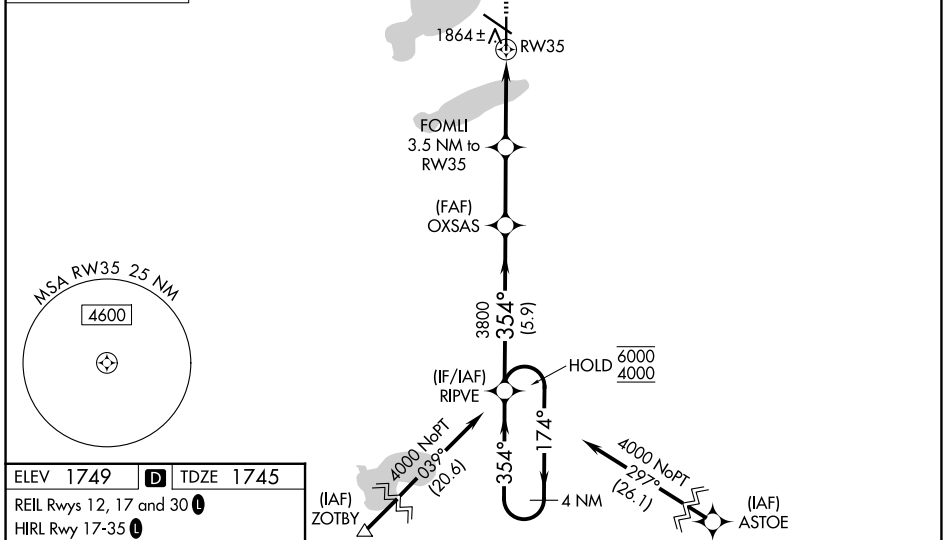
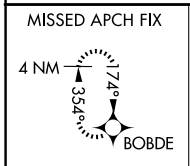


WAAS CH 82614 W35A	APP CRS 354°	Rwy Ldg TDZE Apt Elev	6893 1745 1749
--	------------------------	-----------------------------	---

RNAV (GPS) RWY 35

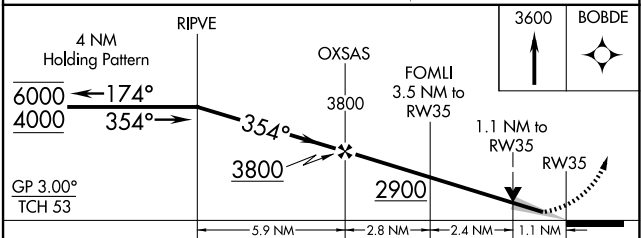
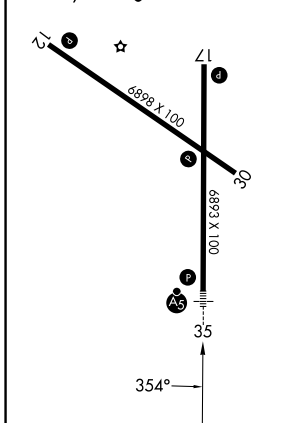
WATERTOWN RGNL (ATY)

RNP APCH - GPS.		MALSR	MISSED APPROACH: Climb to 3600 direct BOBDE and hold.
⚠ For uncompensated Baro-VNAV systems, LNAV/VNAV NA below -21°C or above 54°C. For inop ALS, increase LNAV Cat C/D visibility to 1 1/8 SM.			
ASOS 126.625	MINNEAPOLIS CENTER 128.5 306.2	UNICOM 123.05 (CTAF) 0	



ELEV 1749	D	TDZE 1745
-----------	----------	-----------

REIL Rws 12, 17 and 30
 HIRL Rwy 17-35
 MIRL Rwy 12-30



CATEGORY	A	B	C	D
LPV DA	1945-1/2 200 (200-1/2)			
LNAV/VNAV DA	2180-3/4 435 (500-3/4)			
LNAV MDA	2160-1/2	415 (500-1/2)	2160-3/4	415 (500-3/4)
CIRCLING	2260-1	511 (600-1)	2500-2 1/4 751 (800-2 1/4)	2500-2 1/2 751 (800-2 1/2)

NC-1, 16 APR 2026 to 14 MAY 2026

NC-1, 16 APR 2026 to 14 MAY 2026