

TACAN RWY 23

TACAN CEF Chan 87	APCH CRS 220°	Rwy ldg 11,597' TDZE 241 Arprt Elev 241
-----------------------------	-------------------------	--

[USAF]

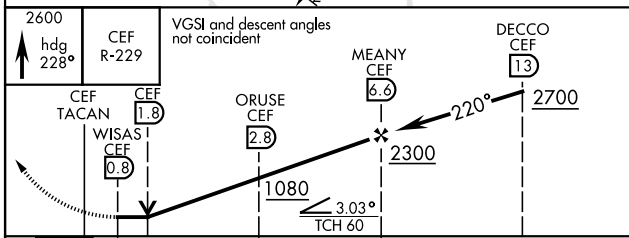
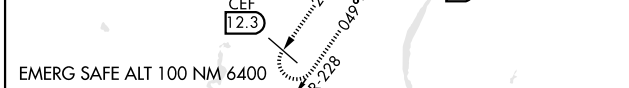
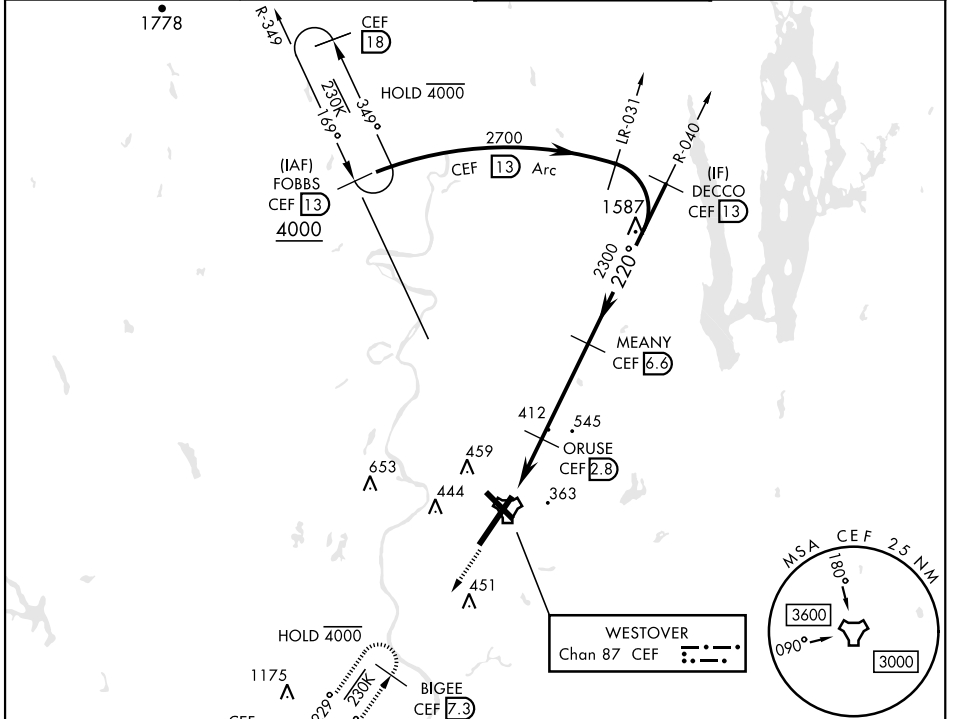
WESTOVER ARB METROPOLITAN (KCEF)

▼ * When ALS inop, increase CAT AB RVR to 55 and vis to 1 mile, CAT CDE vis to 1 $\frac{1}{2}$ miles.
 ** Circling not authorized all CAT acft from RWY 23 clockwise to RWY 33.

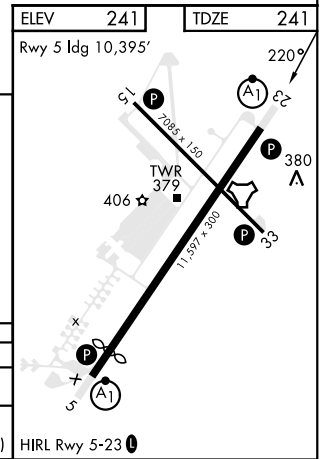


MISSED APPROACH: Climb to 2600 on heading 228° to intercept CEF TACAN R-229 direct BIGEE and hold.

ATIS ★ 127.525	BRADLEY APP CON 125.35 281.5	TOWER ★ 134.85 (CTAF) 348.75	GND CON 118.35 275.8
--------------------------	--	--	--------------------------------



CATEGORY	A	B	C	D	E
S-23 *	760/24 519 (600-1/2)		760/55 519 (600-1)		
CIRCLING **	760-1 519 (600-1)	780-1 539 (600-1)	840-1 599 (600-1 1/2)	1060-2 819 (900-2 3/4)	1080-3 839 (900-3)



TACAN RWY 23

NE-1, 16 APR 2026 to 14 MAY 2026

NE-1, 16 APR 2026 to 14 MAY 2026