

25331

AIRPORT DIAGRAM

AL-448 (FAA)

PALM BEACH COUNTY PARK (L.N.A)
WEST PALM BEACH, FLORIDA

AWOS-3PT
119.925
CLNC DEL
127.35
CTAF/UNICOM
122.7

26°36.0'N

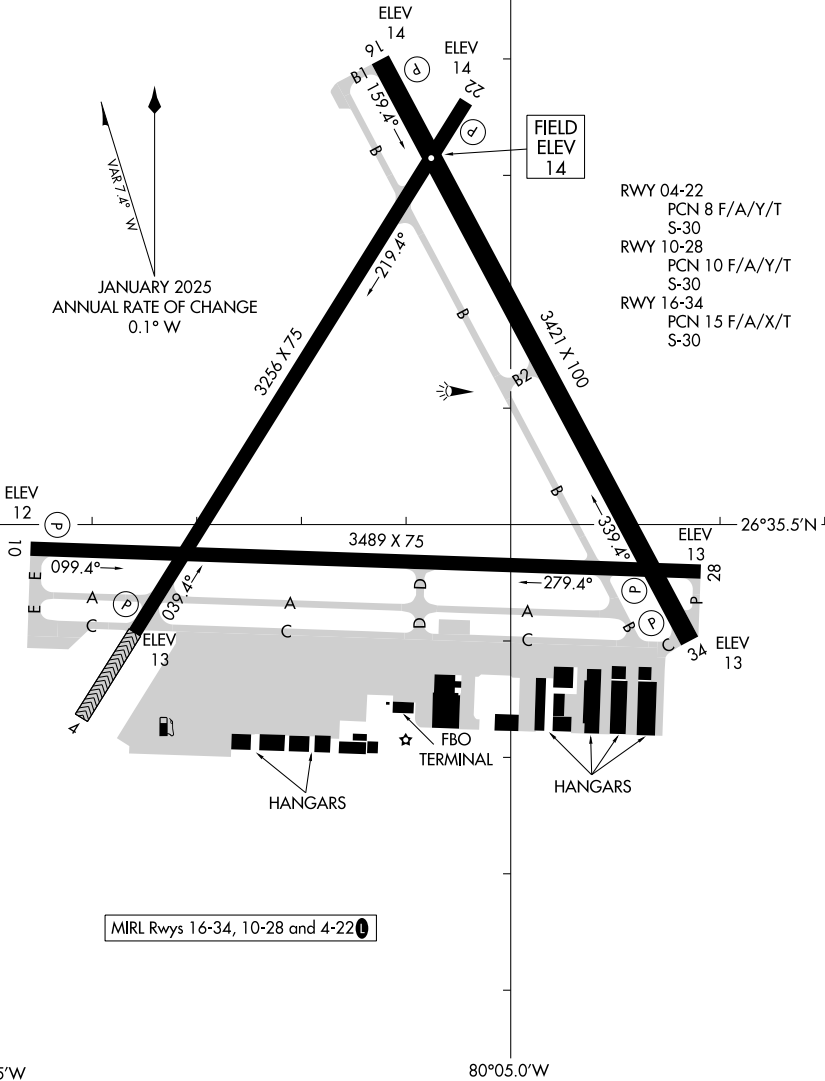
VAR 7.5° W
JANUARY 2025
ANNUAL RATE OF CHANGE
0.1° W

FIELD
ELEV
14

RWY 04-22
PCN 8 F/A/Y/T
S-30
RWY 10-28
PCN 10 F/A/Y/T
S-30
RWY 16-34
PCN 15 F/A/X/T
S-30

SE-3, 16 APR 2026 to 14 MAY 2026

SE-3, 16 APR 2026 to 14 MAY 2026



MIRL Rwy 16-34, 10-28 and 4-22

AIRPORT DIAGRAM

25331

WEST PALM BEACH, FLORIDA
PALM BEACH COUNTY PARK (L.N.A)