

WAAS CH <b>69232</b> <b>W34A</b>	APP CRS <b>319°</b>	Rwy Ldg <b>3421</b> TDZE <b>14</b> Apt Elev <b>14</b>
--	------------------------	---

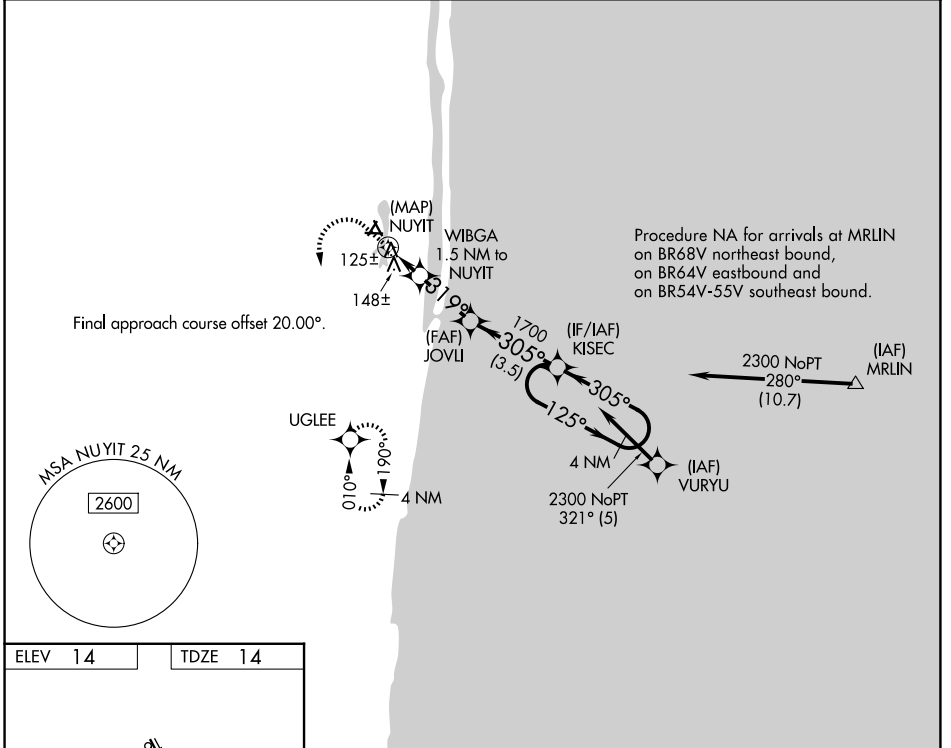
# RNAV (GPS) RWY 34

PALM BEACH COUNTY PARK (L.N.A)

**▼** DME/DME RNP-0.3 NA. Rwy 34 helicopter visibility reduction below 1 SM NA. Circling to Rwys 4, 16, 22, 28 NA at night. Straight-in Rwy 34 NA at night, Circling Rwy 34 NA at night.

**MISSED APPROACH:** (Do not exceed 200K until UGLEE) Climb to 700 then climbing left turn to 2000 direct UGLEE and hold.

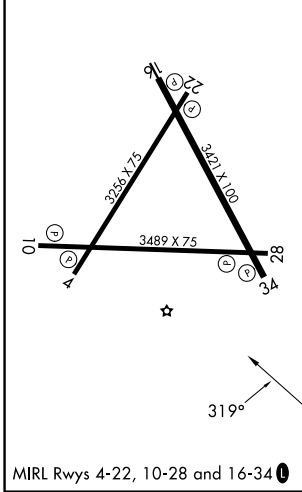
AWOS-3PT <b>119.925</b>	PALM BEACH APP CON <b>127.35 343.6</b>	UNICOM <b>122.7 (CTAF) 0</b>
----------------------------	---	---------------------------------



SE-3, 16 APR 2026 to 14 MAY 2026

SE-3, 16 APR 2026 to 14 MAY 2026

ELEV <b>14</b>	TDZE <b>14</b>
----------------	----------------



700	2000	UGLEE	Visual Segment - Obstacles.		4 NM Holding Pattern
↑	↶	☀	WIBGA 1.5 NM to NUYIT	JOVLI	KISEC
			NUYIT	1700	2300
			800	305°	125°
			0.5	1.5 NM	2.4 NM
			3.5 NM		
CATEGORY	A	B	C	D	
LP MDA	380-1 366 (400-1)			NA	
LNVA MDA	400-1	386 (400-1)	400-1 <sup>1</sup> / <sub>8</sub> 386 (400-1 <sup>1</sup> / <sub>8</sub> )	NA	
CIRCLING	460-1 446 (500-1)	520-1 506 (600-1)	580-1 <sup>1</sup> / <sub>2</sub> 566 (600-1 <sup>1</sup> / <sub>2</sub> )	NA	