

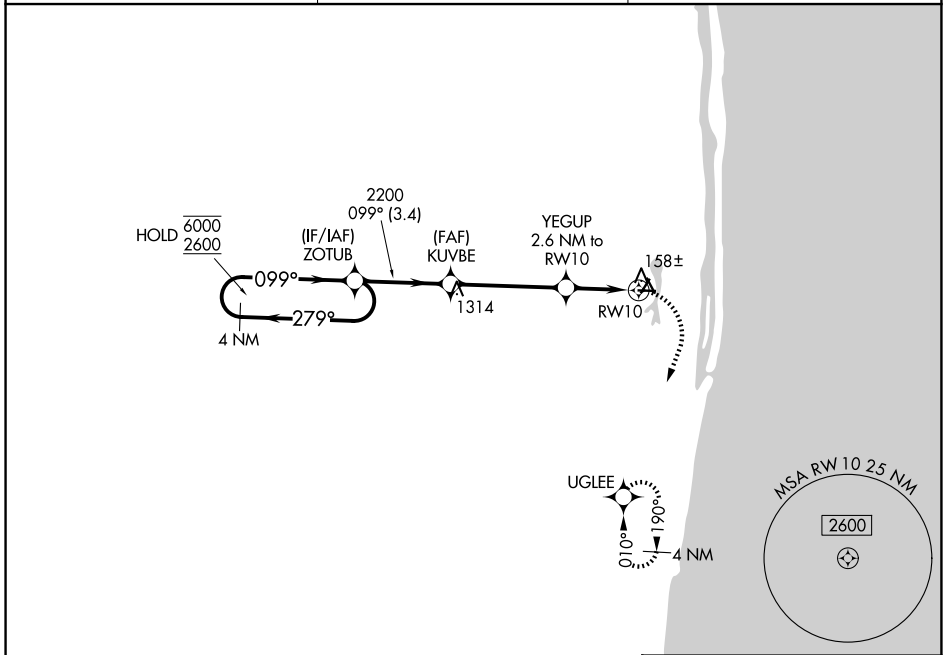
APP CRS	Rwy Ldg	N/A
099°	TDZE	N/A
	Apt Elev	14

RNAV (GPS)-A

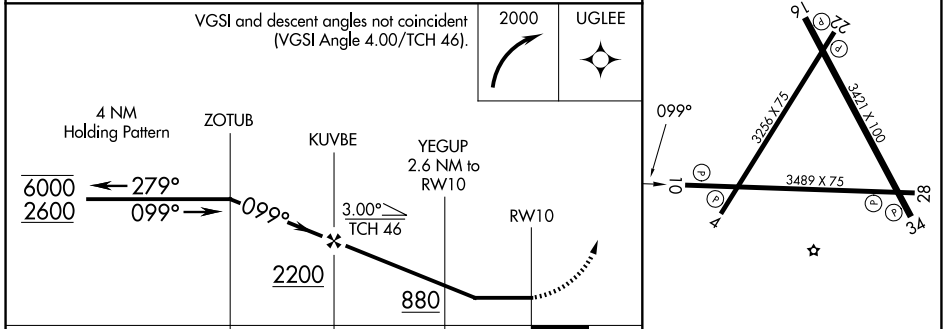
PALM BEACH COUNTY PARK (LNA)

RNP APCH - GPS.	MISSED APPROACH: (Do not exceed 210K until turn completion) Climbing right turn to 2000 direct UGLEE and hold; continue climb-in-hold to 2000.
Rwy 10 helicopter visibility reduction below 1 SM NA. Circling Rwy 4, 16, 22, 28, 34 NA at night.	

AWOS-3PT 119.925	PALM BEACH APP CON 127.35 343.6	UNICOM 122.7 (CTAF) 0
----------------------------	---	---------------------------------



ELEV	14
------	----



CATEGORY	A	B	C	D
CIRCLING	480-1 466 (500-1)	540-1 526 (600-1)	580-1½ 566 (600-1½)	NA

MIRL Rwy 4-22, 10-28 and 16-34 0

SE-3, 16 APR 2026 to 14 MAY 2026

SE-3, 16 APR 2026 to 14 MAY 2026