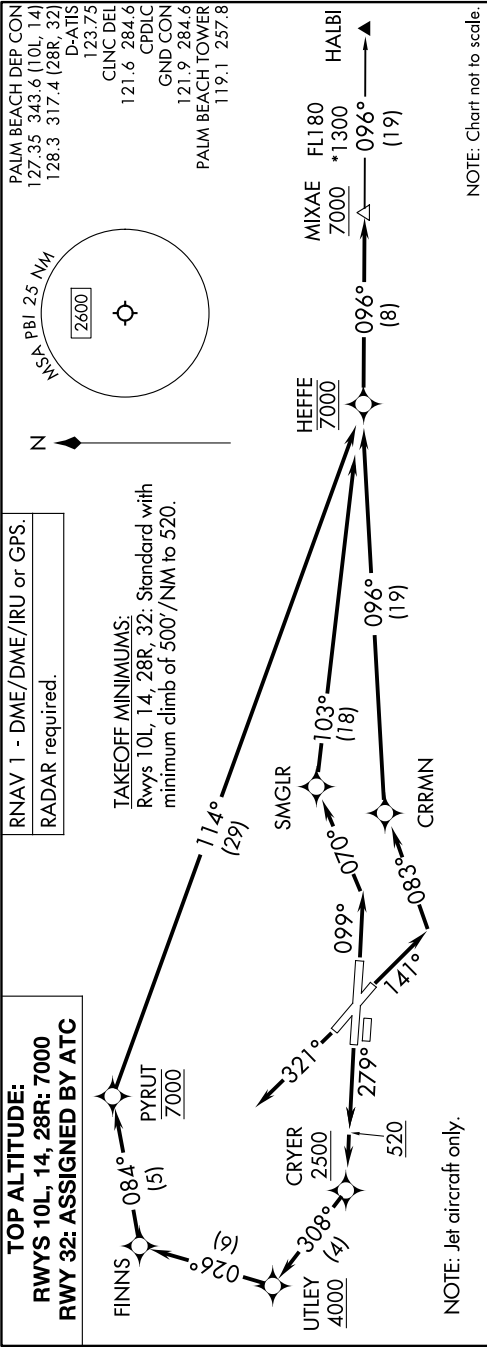


MIXAE FOUR DEPARTURE (RNAV)

SE-3, 16 APR 2026 to 14 MAY 2026



NOTE: Jet aircraft only.

NOTE: Chart not to scale.

DEPARTURE ROUTE DESCRIPTION

TAKEOFF RUNWAY 10L: Climb on heading 099° to intercept course 070° to SMGLR, then on track 103° to cross HEFFE at 7000, thence. . . .

TAKEOFF RUNWAY 14: Climb on heading 141° to intercept course 083° to CRRMN, then on track 096° to cross HEFFE at 7000, thence. . . .

TAKEOFF RUNWAY 28R: Climb on heading 279° to 520, then direct CRYER, cross CRYER at or above 2500, then on track 308° to cross UTLEY at or above 4000, then on track 026° to FINNS, then on track 084° to cross PYRUT at 7000, then on track 114° to cross HEFFE at 7000, thence. . . .

TAKEOFF RUNWAY 32: Climb on heading 321°, for vectors to cross HEFFE at 7000, thence. . . .

. . . on track 096° to cross MIXAE at or above 7000 then on transition. Rwy 10L/14/28R: Maintain 7000, Rwy 32: Maintain ATC assigned altitude. Expect filed altitude 10 minutes after departure.

ALL AIRCRAFT: Climb gradients: If unable to accept climb rate advise ATC prior to departure. Runways 10L, 14, 28R, 32: 500'/NM to 520.

HALBI TRANSITION (MIXAE4.HALBI)

SE-3, 16 APR 2026 to 14 MAY 2026

MIXAE FOUR DEPARTURE (RNAV)