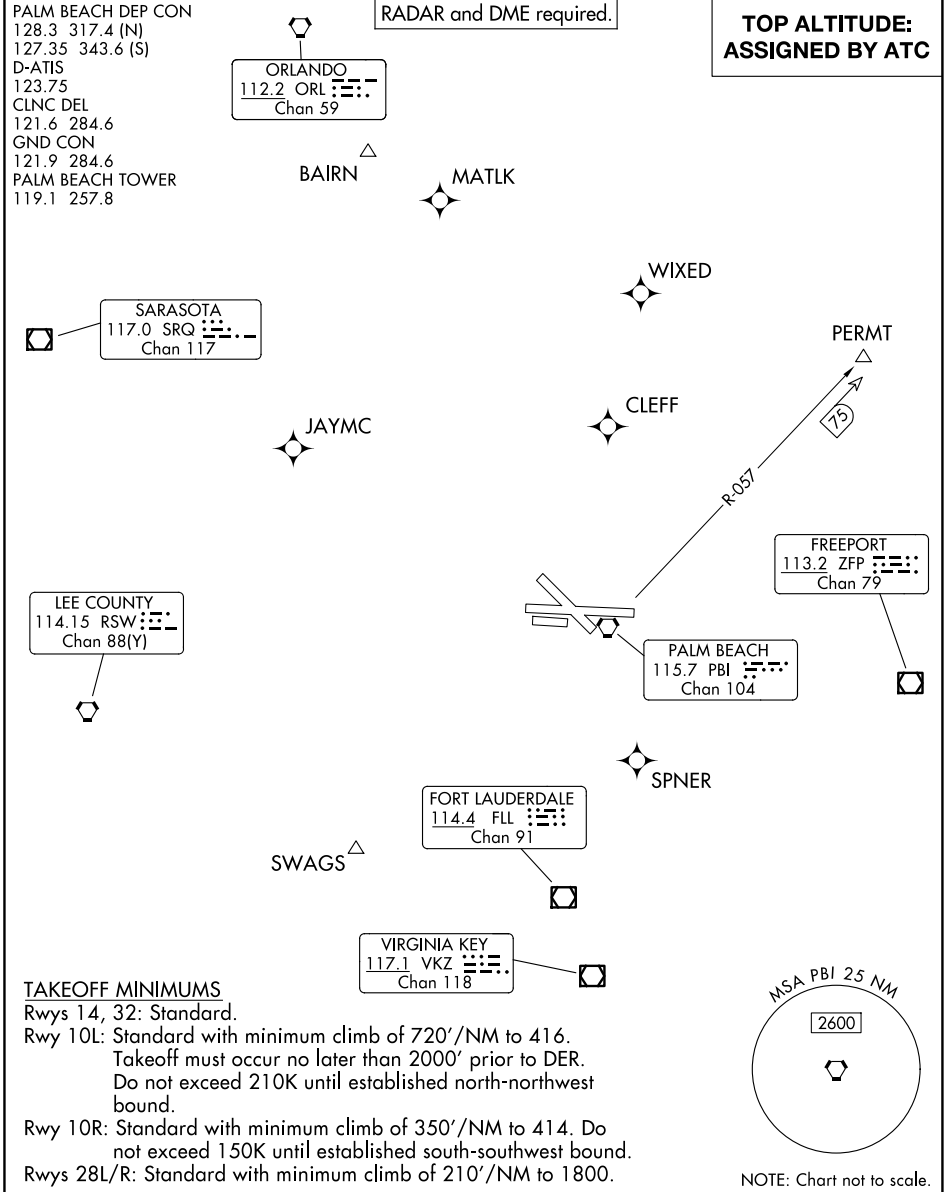


# PALM BEACH FOUR DEPARTURE



PALM BEACH DEP CON  
128.3 317.4 (N)  
127.35 343.6 (S)  
D-ATIS  
123.75  
CLNC DEL  
121.6 284.6  
GND CON  
121.9 284.6  
PALM BEACH TOWER  
119.1 257.8

RADAR and DME required.

**TOP ALTITUDE:  
ASSIGNED BY ATC**

SARASOTA  
117.0 SRQ  
Chan 117

ORLANDO  
112.2 ORL  
Chan 59

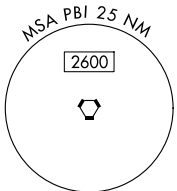
LEE COUNTY  
114.15 RSW  
Chan 88(Y)

FORT LAUDERDALE  
114.4 FL  
Chan 91

PALM BEACH  
115.7 PBI  
Chan 104

FREEPORT  
113.2 ZFP  
Chan 79

VIRGINIA KEY  
117.1 VKZ  
Chan 118



### TAKEOFF MINIMUMS

- Rwys 14, 32: Standard.
- Rwy 10L: Standard with minimum climb of 720'/NM to 416. Takeoff must occur no later than 2000' prior to DER. Do not exceed 210K until established north-northwest bound.
- Rwy 10R: Standard with minimum climb of 350'/NM to 414. Do not exceed 150K until established south-southwest bound.
- Rwys 28L/R: Standard with minimum climb of 210'/NM to 1800.

NOTE: Chart not to scale.

### DEPARTURE ROUTE DESCRIPTION

**TAKEOFF ALL RUNWAYS:** Climb on assigned heading for RADAR vectors to filed or assigned route. Maintain ATC assigned altitude. Expect filed altitude 10 minutes after departure.

# PALM BEACH FOUR DEPARTURE

SE-3, 16 APR 2026 to 14 MAY 2026

SE-3, 16 APR 2026 to 14 MAY 2026