

RNAV (RNP) Z RWY 28R

PALM BEACH INTL (PBI)

APP CRS	Rwy Ldg	8240
279°	TDZE	18
	Apt Elev	20

RNP AR APCH - GPS.

▼ For uncompensated Baro-VNAV systems, procedure NA below 6°C or above 54°C.

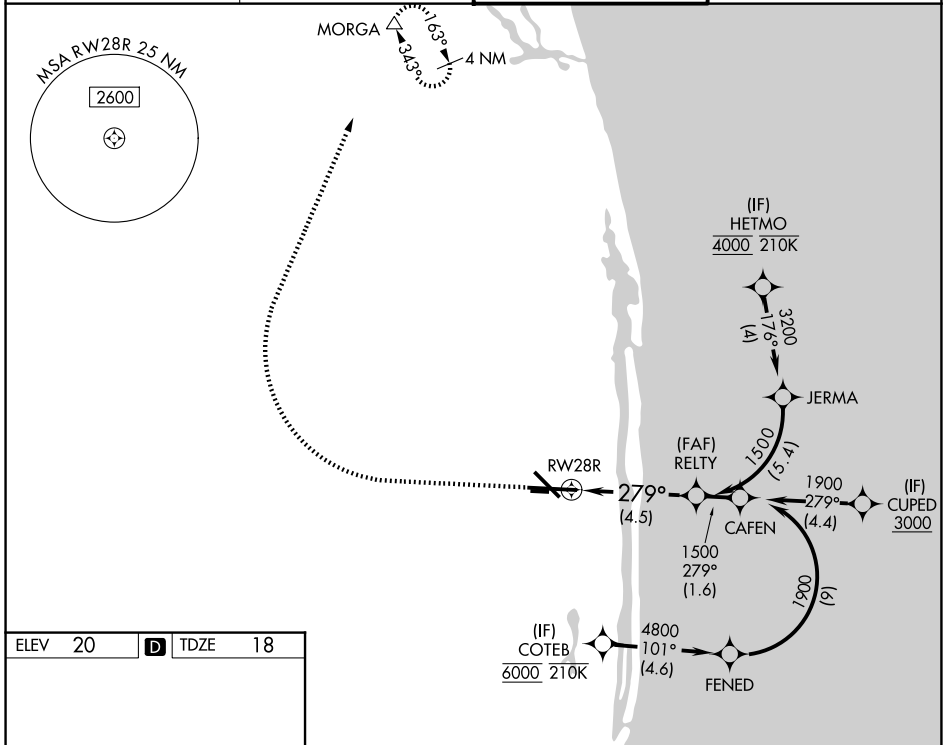
MISSED APPROACH: Climb to 500 then climbing right turn to 3000 direct MORGA and hold.

D-ATIS
123.75

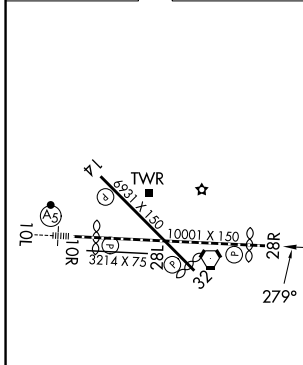
PALM BEACH APP CON
128.3 317.4

PALM BEACH TOWER
119.1 257.8

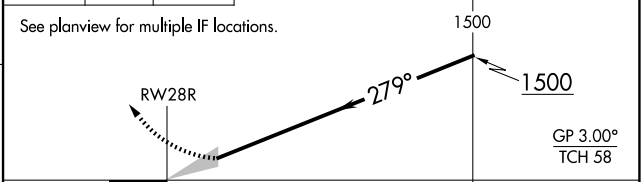
GND CON
121.9 284.6



ELEV	20	D	TDZE	18
------	----	----------	------	----



500	3000	MORGA	VGSJ and RNAV glidepath not coincident (VGSJ Angle 3.00°/TCH 70°).
↑	↷	△	



HIRL Rwy 10L-28R
REIL Rwy 10R, 14, 28L, 28R and 32
MIRL Rwy 14-32 and 10R-28L

CATEGORY	A	B	C	D
RNP 0.30 DA	404/60 386 (400-1¼)			

AUTHORIZATION REQUIRED

SE-3, 16 APR 2026 to 14 MAY 2026

SE-3, 16 APR 2026 to 14 MAY 2026