

WAAS CH <b>40018</b> <b>W14A</b>	APP CRS <b>141°</b>	Rwy Ldg TDZE Apt Elev	<b>6000</b> <b>17</b> <b>20</b>
--	------------------------	-----------------------------	---------------------------------------

# RNAV (GPS) Y RWY 14

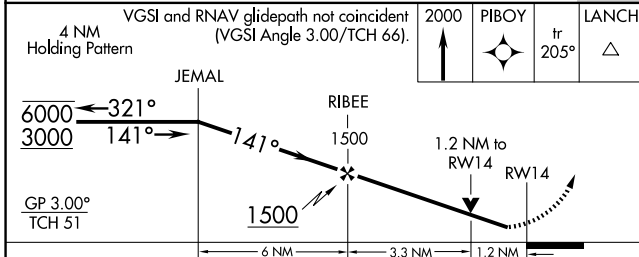
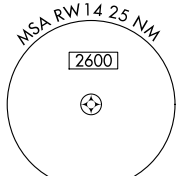
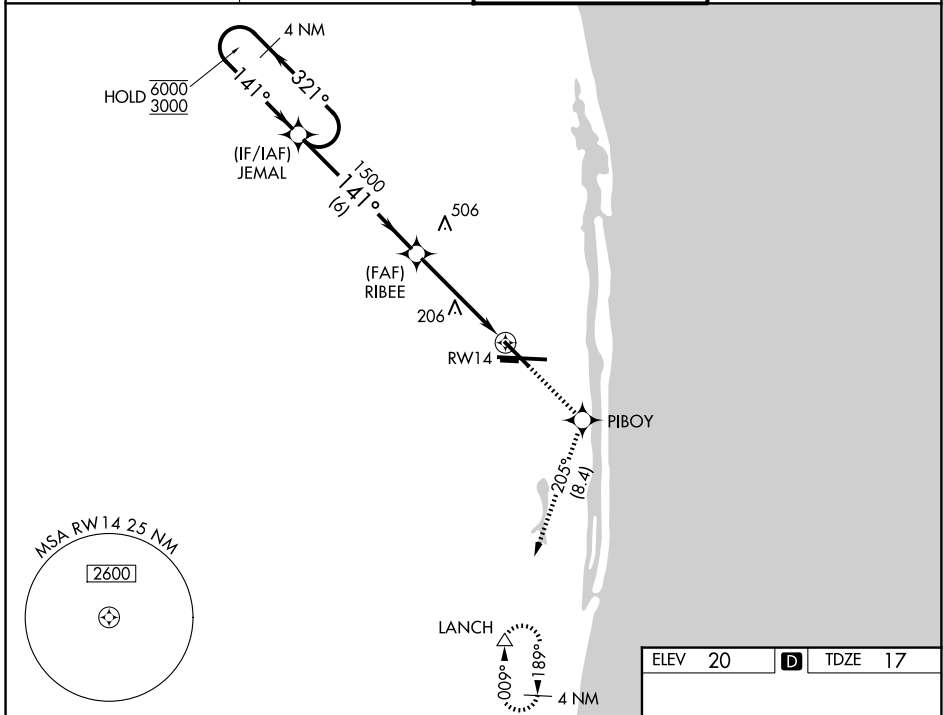
PALM BEACH INTL (PBI)

RNP APCH - GPS.

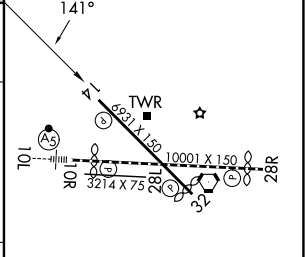
**▼** Rwy 14 helicopter visibility reduction below 3/4 SM NA. For uncompensated Baro-VNAV systems, LNAV/VNAV NA below 6°C or above 54°C.  
**▲**

**MISSED APPROACH:** Climb to 2000 direct PIBOY and on track 205° to LANCH and hold.

D-ATIS <b>123.75</b>	PALM BEACH APP CON <b>128.3 317.4</b>	PALM BEACH TOWER <b>119.1 257.8</b>	GND CON <b>121.9 284.6</b>
-------------------------	--	--	-------------------------------



ELEV 20	<b>D</b>	TDZE 17
---------	----------	---------



CATEGORY	A	B	C	D
LPV DA		269-3/4	252 (300-3/4)	
LNAV/VNAV DA		338-1	321 (400-1)	
LNAV MDA	460-1	443 (500-1)	460-1 3/8	443 (500-1 3/8)
CIRCLING	560-1	540 (600-1)	740-2 720 (800-2)	780-2 1/2 760 (800-2 1/2)

HIRL Rwy 10L-28R  
REIL Rwy 10R, 14, 28L, 28R and 32  
MIRL Rwy 14-32 and 10R-28L

SE-3, 16 APR 2026 to 14 MAY 2026

SE-3, 16 APR 2026 to 14 MAY 2026