

RNAV 1 - DME/DME/IRU or GPS.

RADAR required.

TOP ALTITUDE:
RWYS 10L/14/28R: 12000
RWY 32: ASSIGNED BY ATC

PALM BEACH DEP CON
128.3 317.4
D-ATIS
123.75
CLNC DEL
121.6 284.6
CPDLC
GND CON
121.9 284.6
PALM BEACH TOWER
119.1 257.8

TAKEOFF MINIMUMS

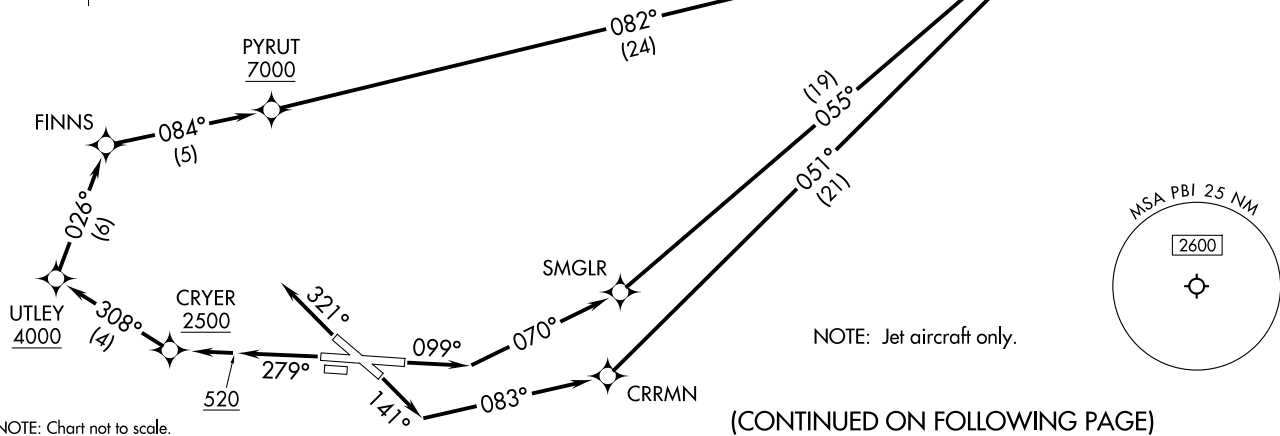
Rwys 10L, 14, 28R, 32: Standard with minimum climb of 500'/NM to 520.

SLIDZ THREE DEPARTURE (RNAV)
(SLIDZ3.SLIDZ) 22JAN26

(SLIDZ3.SLIDZ) 26022
SLIDZ THREE DEPARTURE (RNAV)

AL-449 (FAA)

PALM BEACH INTL (PBI)
WEST PALM BEACH, FLORIDA



(CONTINUED ON FOLLOWING PAGE)

NOTE: Chart not to scale.

WEST PALM BEACH, FLORIDA
PALM BEACH INTL (PBI)

SLIDZ THREE DEPARTURE (RNAV)



DEPARTURE ROUTE DESCRIPTION

TAKEOFF RUNWAY 10L: Climb on heading 099° to intercept course 070° to SMGLR, then on track 055° to cross SLIDZ at or above 10000, thence. . .

TAKEOFF RUNWAY 14: Climb on heading 141° to intercept course 083° to CRRMN, then on track 051° to cross SLIDZ at or above 10000, thence. . .

TAKEOFF RUNWAY 28R: Climb on heading 279° to 520, then direct CRYER, cross CRYER at or above 2500, then on track 308° to cross UTLEY at or above 4000, then on track 026° to FINNS, then on track 084° to cross PYRUT at or above 7000, then on track 082° to cross SLIDZ at or above 10000, thence. . .

TAKEOFF RUNWAY 32: Climb on heading 321°, for vectors to cross SLIDZ at or above 10000, thence. . .

. . . on track 049° to cross FIXAS at or above 12000, then on transition, maintain ATC assigned altitude. Expect filed altitude ten minutes after departure.

ALL AIRCRAFT: Climb gradients: If unable to accept climb rate advise ATC prior to departure. Runways 10L, 14, 28R, 32: 500'/NM to 520.

LENDZ TRANSITION (SLIDZ3.LENDZ)

SE-3, 16 APR 2026 to 14 MAY 2026

SE-3, 16 APR 2026 to 14 MAY 2026