

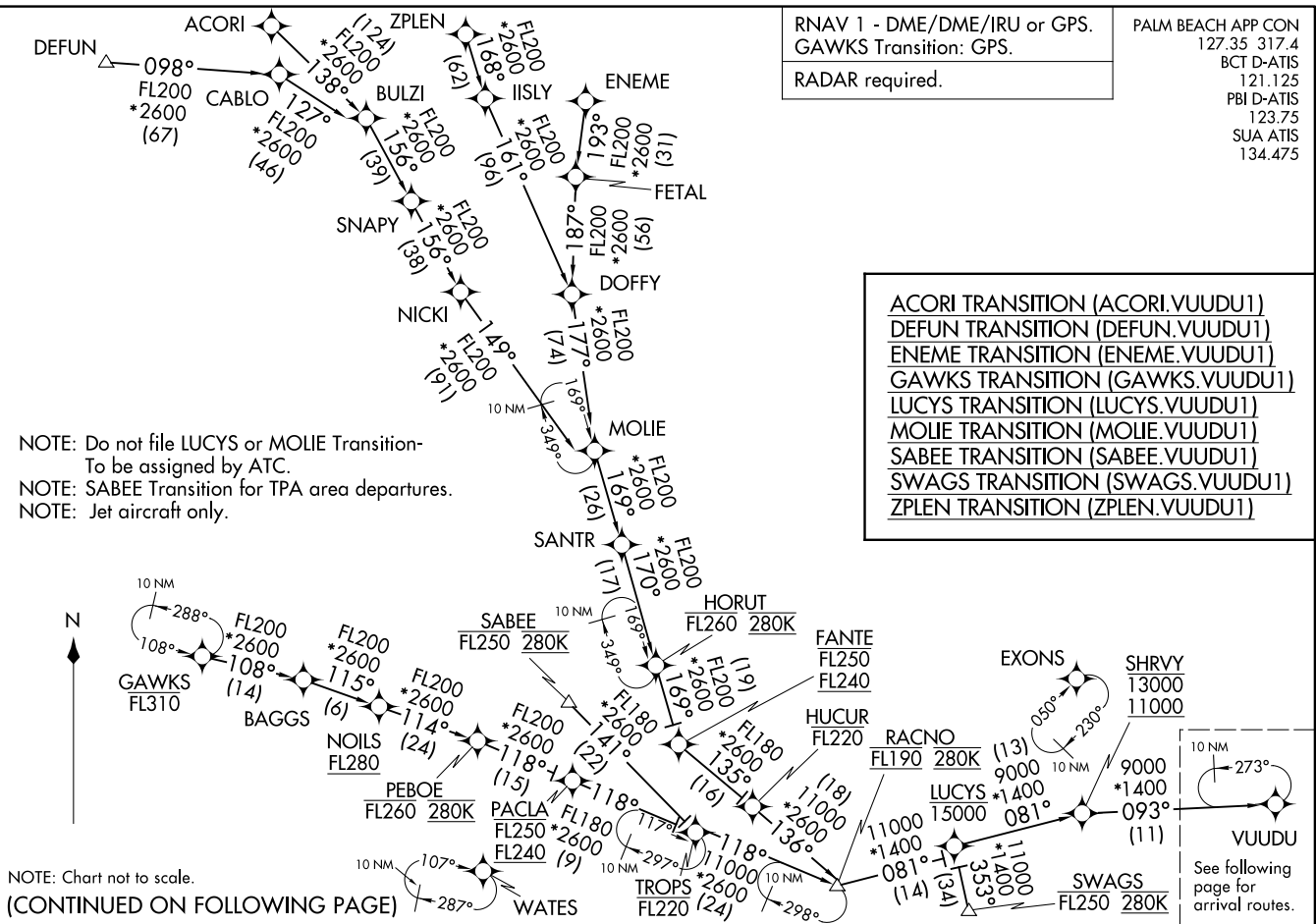
VUUDU ONE ARRIVAL (RNAV) Transition Routes
(VUUDU.VUUDU1) 19MAY22

WEST PALM BEACH, FLORIDA

(VUUDU.VUUDU1) 26078
VUUDU ONE ARRIVAL (RNAV) Transition Routes

AL-449 (FAA)

WEST PALM BEACH, FLORIDA



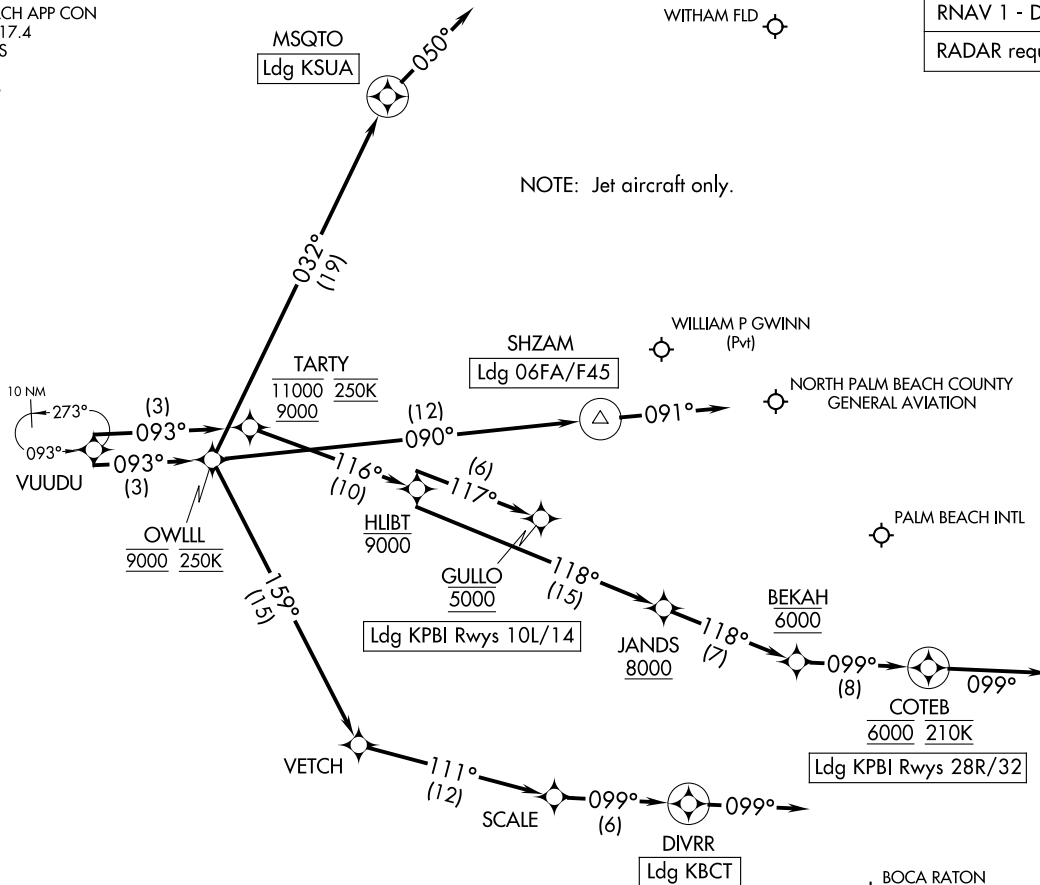
RNAV 1 - DME/DME/IRU or GPS.
RADAR required.

VUUDU ONE ARRIVAL (RNAV)
(VUUDU, VUUDU1) 19MAY22

Arrival Routes

WEST PALM BEACH, FLORIDA

PALM BEACH APP CON
127.35 317.4
BCT D-ATIS
121.125
PBI D-ATIS
123.75
SUA ATIS
134.475



(CONTINUED ON FOLLOWING PAGE)

NOTE: Chart not to scale.

(VUUDU, VUUDU1) 26078
VUUDU ONE ARRIVAL (RNAV)

AL-449 (FAA)
Arrival Routes

WEST PALM BEACH, FLORIDA

ARRIVAL ROUTE DESCRIPTION

KPBI: From VUUDU on track 093° to cross TARTY between 9000 and 11000 and at 250K, then on track 116° to cross HLIBT at or below 9000.

LANDING KPBI RUNWAYS 10L, 14: From HLIBT on track 117° to cross GULLO at 5000. Expect ILS or LOC RWY 10L, RNAV (RNP) Z RWY 14 approach.

LANDING KPBI RUNWAYS 28R, 32: From HLIBT on track 118° to cross JANDS at or above 8000, then on track 118° to cross BEKAH at 6000, then on track 099° to cross COTEB at 6000 and at 210K, then on track 099°. Expect RADAR vectors to final approach course.

LANDING 06FA/F45: From VUUDU on track 093° to cross OWLLL at 9000 and at 250K, then on track 090° to SHZAM, then on heading 091°. Expect RADAR vectors to final approach course.

LANDING KBCT: From VUUDU on track 093° to cross OWLLL at 9000 and at 250K, then on track 159° to VETCH, then on track 111° to SCALE, then on track 099° to DIVRR, then on track 099°. Expect RADAR vectors to final approach course.

LANDING KSUA: From VUUDU on track 093° to cross OWLLL at 9000 and at 250K, then on track 032° to MSQTO, then on heading 050°. Expect RADAR vectors to final approach course.

SE-3, 16 APR 2026 to 14 MAY 2026

SE-3, 16 APR 2026 to 14 MAY 2026