

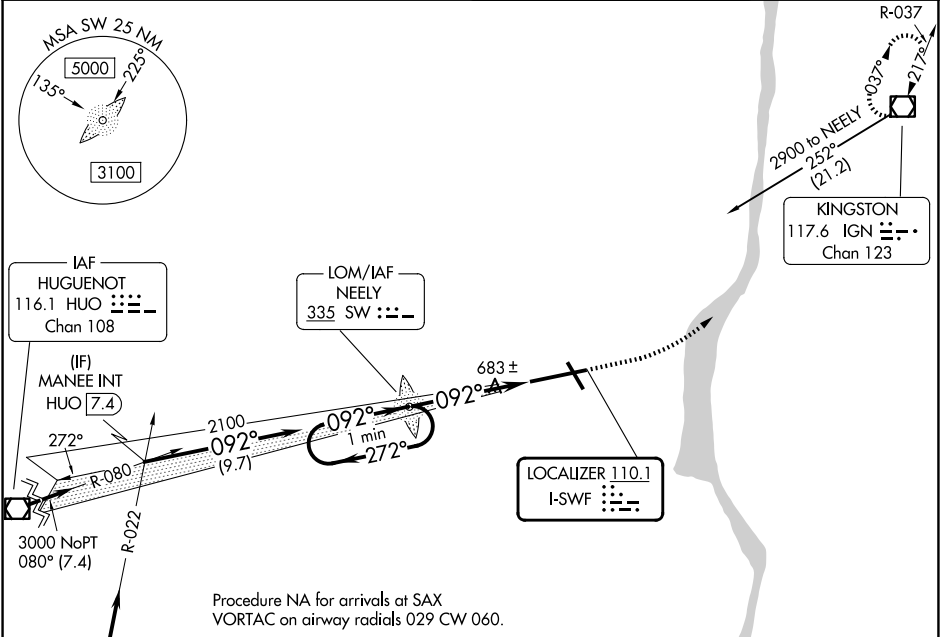
LOC I-SWF <b>110.1</b>	APP CRS <b>092°</b>	Rwy Ldg TDZE Apt Elev	<b>8817</b> <b>482</b> <b>491</b>
---------------------------	------------------------	-----------------------------	---

# ILS RWY 9 (SA CAT I)

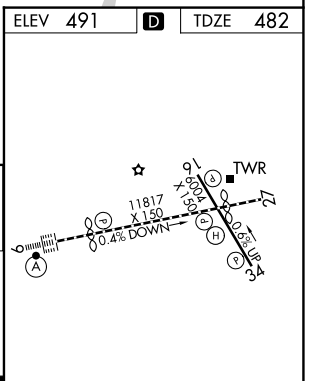
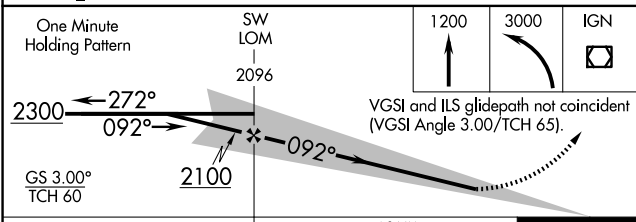
## NEW YORK STEWART INTL (SWF)

Requires specific OPSPEC, MSPEC, or LOA approval and use of HUD to DH.	ALSIF-2	MISSED APPROACH: Climb to 1200 then climbing left turn to 3000 direct IGN VOR/DME and hold.

ATIS <b>124.575</b>	NEW YORK APP CON <b>132.75 363.1</b>	STEWART TOWER <b>121.0 254.4</b>	GND CON <b>121.9</b>
------------------------	---	-------------------------------------	-------------------------



ELEV 491	<b>D</b>	TDZE 482
----------	----------	----------



CATEGORY	A	B	C	D
S-ILS 9		RA 142/14 150	DA 632	

**SA CATEGORY I ILS - SPECIAL AIRCREW & AIRCRAFT CERTIFICATION REQUIRED**

TDZ/CL Rwy 9  
HIRL Rwys 9-27 and 16-34  
REIL Rwys 16, 27 and 34

NE-2, 16 APR 2026 to 14 MAY 2026

NE-2, 16 APR 2026 to 14 MAY 2026