

APP CRS	Rwy Ldg	6004
163°	TDZE	471
	Apt Elev	491

RNAV (GPS) RWY 16

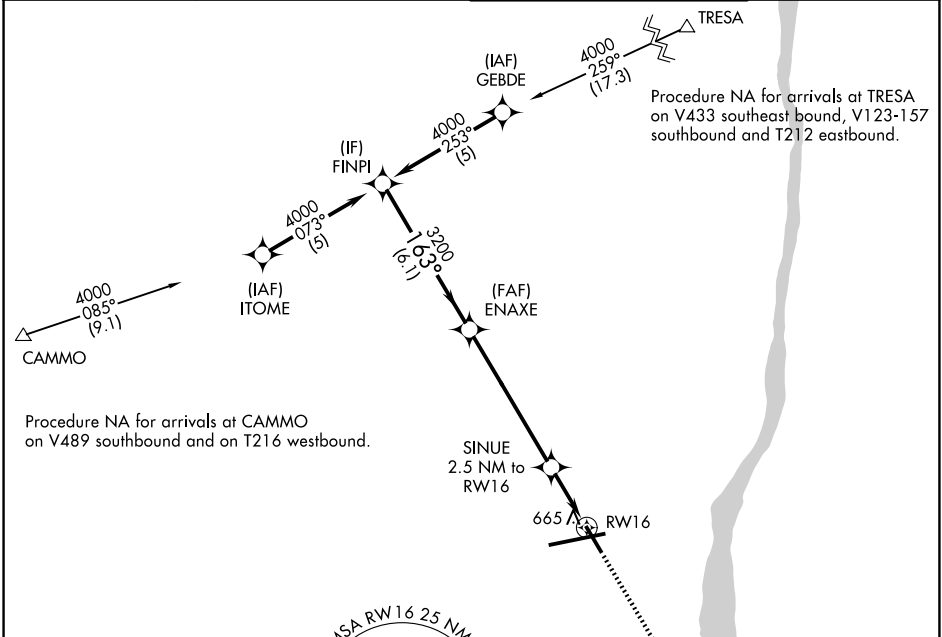
NEW YORK STEWART INTL (SWF)

RNP APCH - GPS.

⚠ Rwy 16 helicopter visibility reduction below 3/4 SM NA.
⚠ Procedure NA when restricted area R-5206 is active.

MISSED APPROACH: Climb to 4000 direct MEPTE and hold, continue climb-in-hold to 4000.

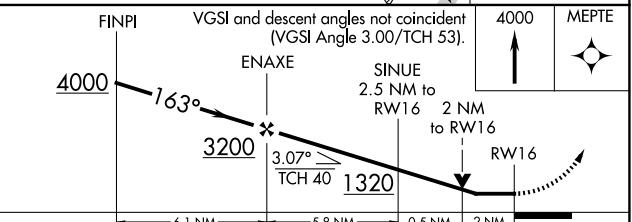
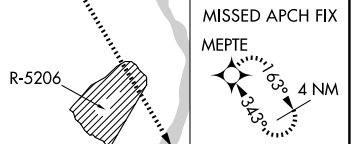
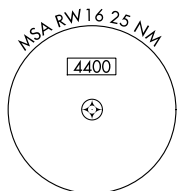
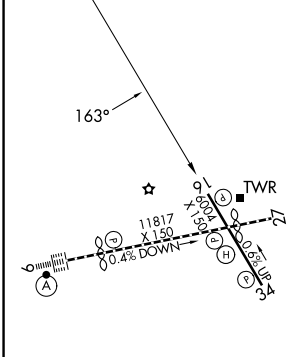
ATIS 124.575	NEW YORK APP CON 132.75 363.1	STEWART TOWER 121.0 254.4	GND CON 121.9
------------------------	---	-------------------------------------	-------------------------



NE-2, 16 APR 2026 to 14 MAY 2026

NE-2, 16 APR 2026 to 14 MAY 2026

ELEV 491	D	TDZE 471
-----------------	----------	-----------------



CATEGORY	A	B	C	D
LNAV MDA	1140-1	669 (700-1)	1140-1 7/8	669 (700-1 7/8)
CIRCLING	1200-1	709 (800-1)	1200-2 709 (800-2)	1200-2 1/4 709 (800-2 1/4)