

APP CRS
272°
 Rwy Ldg **9817**
 TDZE **469**
 Apt Elev **491**

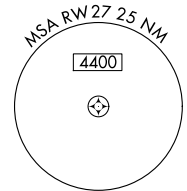
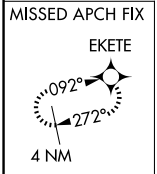
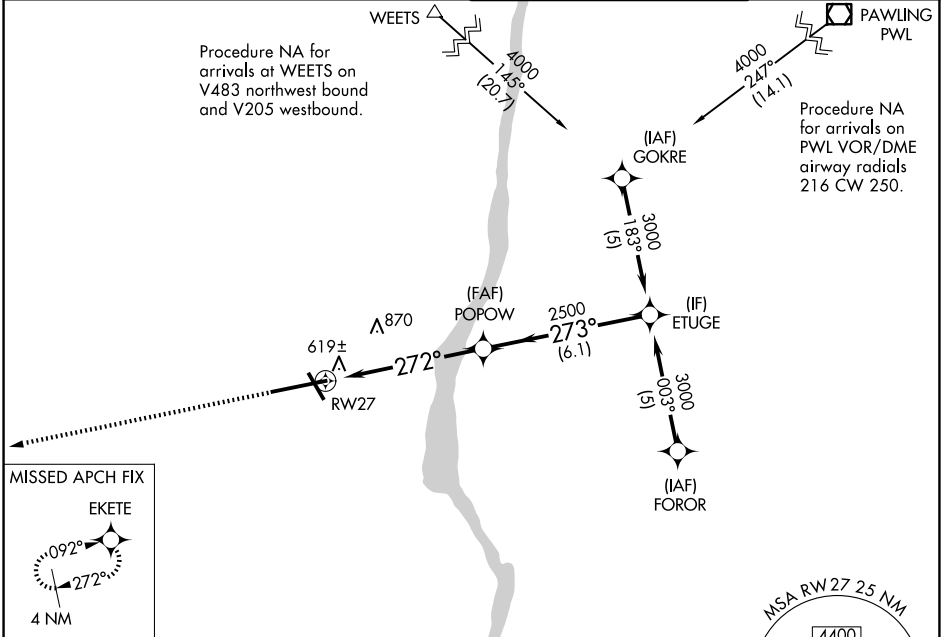
RNAV (GPS) RWY 27

NEW YORK STEWART INTL (SWF)

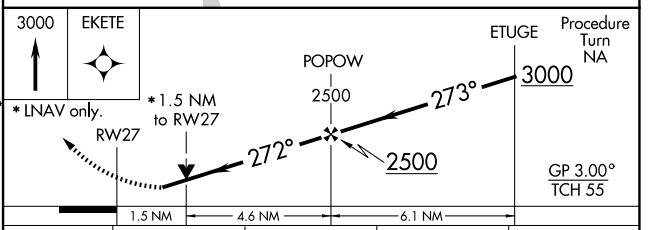
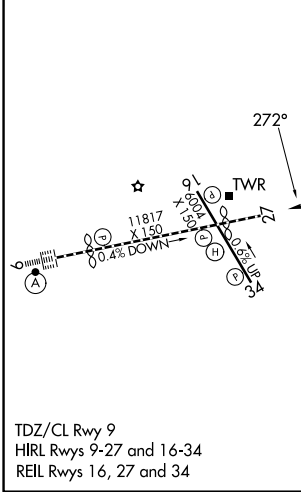
RNP APCH. MISSED APPROACH: Climb to 3000 direct EKETE and hold.

⚠ For uncompensated Baro-VNAV systems, LNAV/VNAV NA below -15°C or above 54°C.

ATIS 124.575	NEW YORK APP CON 132.75 363.1	STEWART TOWER 121.0 254.4	GND CON 121.9
------------------------	---	-------------------------------------	-------------------------



ELEV **491** **D** TDZE **469**



CATEGORY	A	B	C	D
LNAV/DA/VNAV	1048-2		579 (600-2)	
LNAV MDA	1000-1	531 (600-1)	1000-1½ 531 (600-1½)	1000-1¾ 531 (600-1¾)
CIRCLING	1200-1	709 (800-1)	1200-2 709 (800-2)	1200-2¼ 709 (800-2¼)

NE-2, 16 APR 2026 to 14 MAY 2026

NE-2, 16 APR 2026 to 14 MAY 2026