

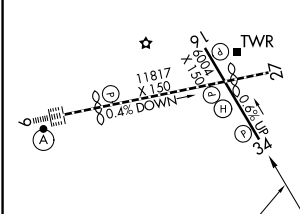
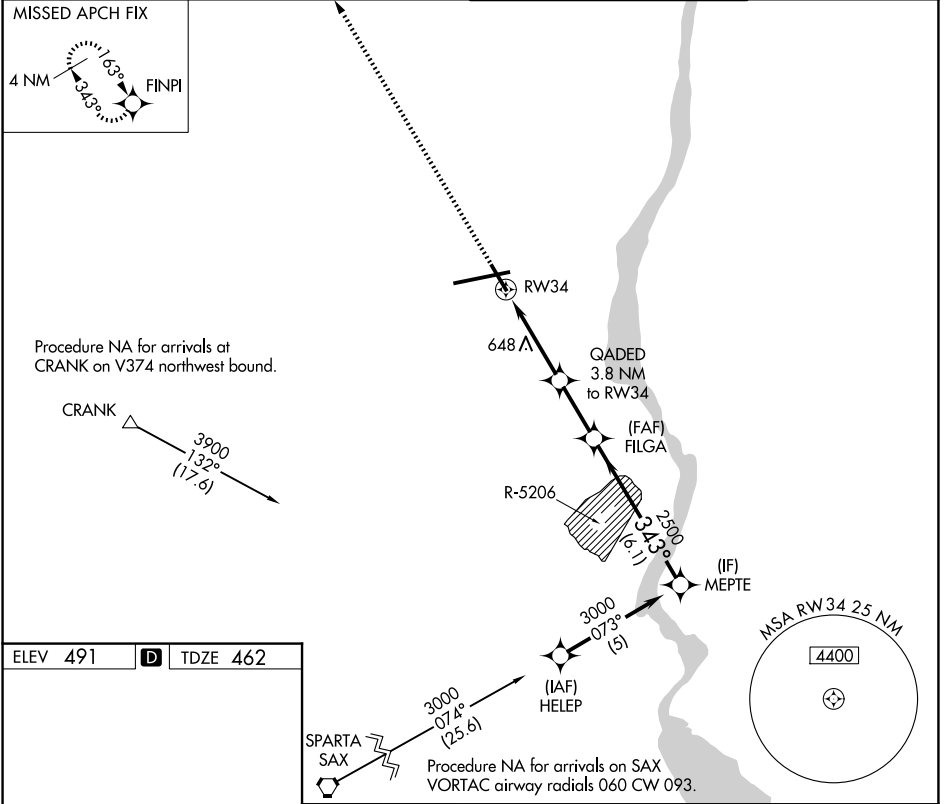
WAAS CH <b>90217</b> <b>W34A</b>	APP CRS <b>343°</b>	Rwy Ldg TDZE <b>462</b> Apt Elev <b>491</b>	<b>6004</b> <b>462</b> <b>491</b>
--	------------------------	---	---

# RNAV (GPS) RWY 34

NEW YORK STEWART INTL (SWF)

RNP APCH - GPS.	MISSED APPROACH: Climb to 3900 direct FINPI and hold.
Procedure NA when restricted area R-5206 is active.	

ATIS <b>124.575</b>	NEW YORK APP CON <b>132.75 363.1</b>	STEWART TOWER <b>121.0 254.4</b>	GND CON <b>121.9</b>
------------------------	---	-------------------------------------	-------------------------



ELEV 491	<b>D</b>	TDZE 462																						
<table border="1"> <tr> <td>3900</td> <td>FINPI</td> <td>GADED 3.8 NM to RW34</td> <td>FILGA 2500</td> <td>MEPTE 3000</td> </tr> <tr> <td colspan="2">RW34</td> <td>1.7 NM to RW34</td> <td>1700</td> <td>2500</td> </tr> <tr> <td colspan="2"></td> <td>1.7 NM</td> <td>2.1 NM</td> <td>2.4 NM</td> </tr> <tr> <td colspan="2"></td> <td>1.7 NM</td> <td>2.1 NM</td> <td>6.1 NM</td> </tr> </table>					3900	FINPI	GADED 3.8 NM to RW34	FILGA 2500	MEPTE 3000	RW34		1.7 NM to RW34	1700	2500			1.7 NM	2.1 NM	2.4 NM			1.7 NM	2.1 NM	6.1 NM
3900	FINPI	GADED 3.8 NM to RW34	FILGA 2500	MEPTE 3000																				
RW34		1.7 NM to RW34	1700	2500																				
		1.7 NM	2.1 NM	2.4 NM																				
		1.7 NM	2.1 NM	6.1 NM																				
TDZ/CL Rwy 9	<table border="1"> <tr> <td>CATEGORY</td> <td>A</td> <td>B</td> <td>C</td> <td>D</td> </tr> <tr> <td>LPV DA</td> <td colspan="2">900-1¼</td> <td colspan="2">438 (500-1¼)</td> </tr> <tr> <td>LNAV MDA</td> <td>1020-1</td> <td>558 (600-1)</td> <td>1020-1½</td> <td>558 (600-1½)</td> </tr> <tr> <td>CIRCLING</td> <td>1200-1</td> <td>709 (800-1)</td> <td>1200-2 709 (800-2)</td> <td>1200-2¼ 709 (800-2¼)</td> </tr> </table>				CATEGORY	A	B	C	D	LPV DA	900-1¼		438 (500-1¼)		LNAV MDA	1020-1	558 (600-1)	1020-1½	558 (600-1½)	CIRCLING	1200-1	709 (800-1)	1200-2 709 (800-2)	1200-2¼ 709 (800-2¼)
CATEGORY	A	B	C	D																				
LPV DA	900-1¼		438 (500-1¼)																					
LNAV MDA	1020-1	558 (600-1)	1020-1½	558 (600-1½)																				
CIRCLING	1200-1	709 (800-1)	1200-2 709 (800-2)	1200-2¼ 709 (800-2¼)																				

NE-2, 16 APR 2026 to 14 MAY 2026

NE-2, 16 APR 2026 to 14 MAY 2026