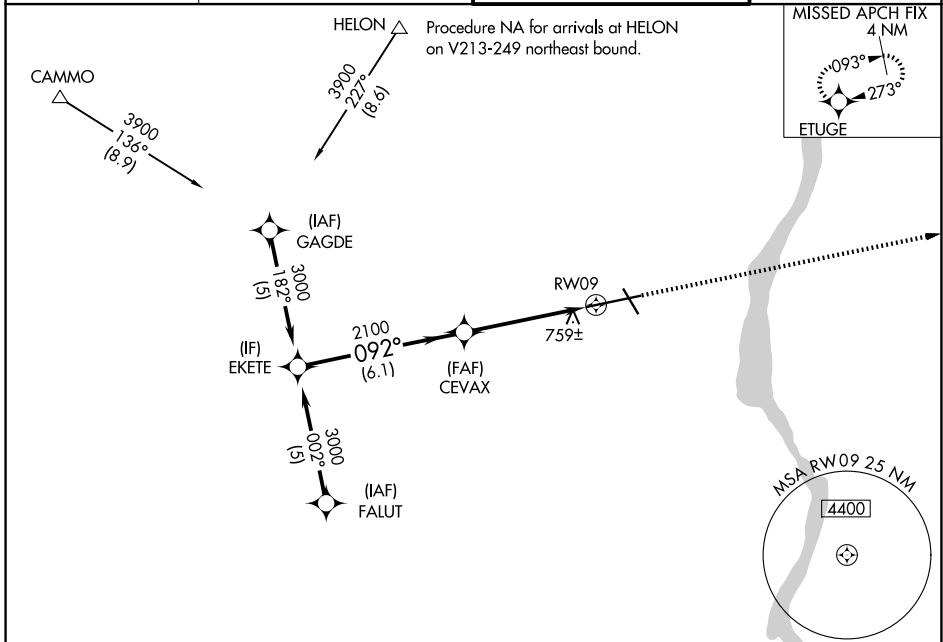


WAAS CH 62818 W09A	APP CRS 092°	Rwy Ldg 8817 TDZE 482 Apr Elev 491
--	------------------------	---

RNAV (GPS) RWY 9

NEW YORK STEWART INTL (SWF)

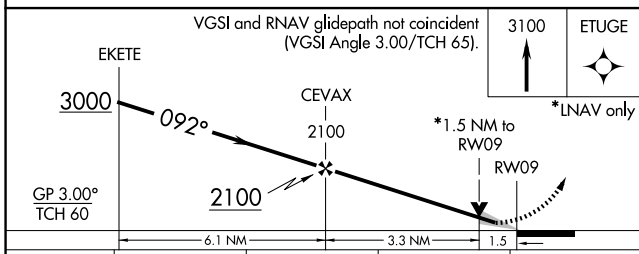
RNP APCH.	<p>Inop table does not apply to LNAV/VNAV. For uncompensated Baro-VNAV systems, LNAV/VNAV NA below -15°C or above 54°C.</p>	<p>ALSf-2</p>	<p>MISSED APPROACH: Climb to 3100 direct ETUGE and hold.</p>
<p>ATIS 124.575</p>	<p>NEW YORK APP CON 132.75 363.1</p>	<p>STEWART TOWER 121.0 254.4</p>	<p>GND CON 121.9</p>



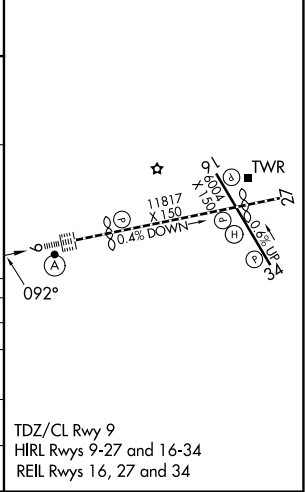
NE-2, 16 APR 2026 to 14 MAY 2026

NE-2, 16 APR 2026 to 14 MAY 2026

ELEV 491	D	TDZE 482
----------	----------	----------



CATEGORY	A	B	C	D
LPV DA		682/24	200 (200-½)	
LNAV/ VNAV DA		1098-2	616 (700-2)	
LNAV MDA	1020/24	538 (600-½)	1020/55 538 (600-1)	1020/60 538 (600-¼)
CIRCLING	1200-1	709 (800-1)	1200-2 709 (800-2)	1200-2¼ 709 (800-2¼)



TDZ/CL Rwy 9
HIRL Rwy 9-27 and 16-34
REIL Rwy 16, 27 and 34