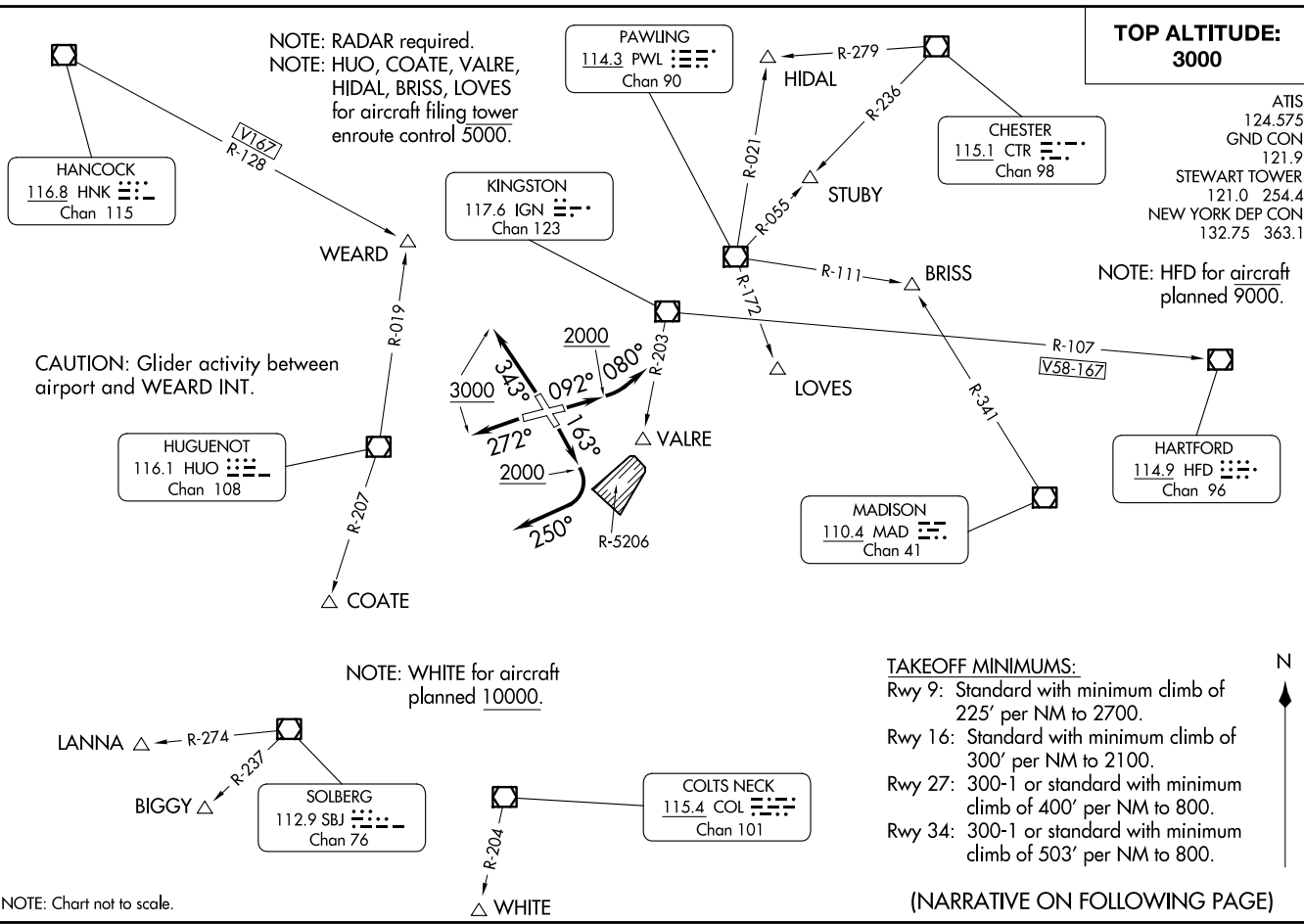


STEWART NINE DEPARTURE  
(SWF9.SWF) 20JUN19

NEW YORK, NEW YORK  
NEW YORK STEWART INTL (SWT)  
NEW YORK, NEW YORK



(SWF9.SWF) 23334  
STEWART NINE DEPARTURE

AL-450 (FAA)

NEW YORK STEWART INTL (SWT)  
NEW YORK, NEW YORK



DEPARTURE ROUTE DESCRIPTION

TAKEOFF RUNWAY 9: Climb heading 092° to 2000, then turn left heading 080°, maintain 3000, thence....

TAKEOFF RUNWAY 16: Climb heading 163° to 2000, then turn right heading 250°, maintain 3000, thence....

TAKEOFF RUNWAY 27: Climb heading 272° to 3000, thence....

TAKEOFF RUNWAY 34: Climb heading 343° to 3000, thence....

...via radar vectors to assigned route/fix, expect clearance to filed altitude/flight level within ten (10) minutes after departure.

LOST COMMUNICATIONS: If radio contact is not established/lost within 2 minutes after departure, proceed on course and climb to 5000. Ten minutes after departure, climb to filed altitude/flight level.

NE-2, 16 APR 2026 to 14 MAY 2026

NE-2, 16 APR 2026 to 14 MAY 2026