

# HI-TACAN Z RWY 14

TACAN NUW Chan <b>85</b>	APCH CRS <b>141°</b>	Rwy ldg TDZE <b>8000</b> <b>39</b> Arpt Elev <b>47</b>
--------------------------	----------------------	--

[USN]

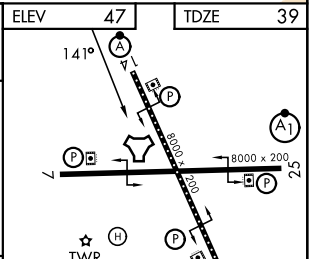
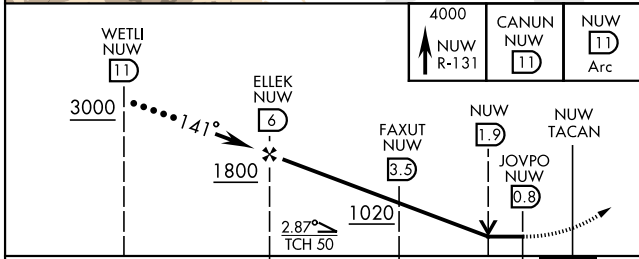
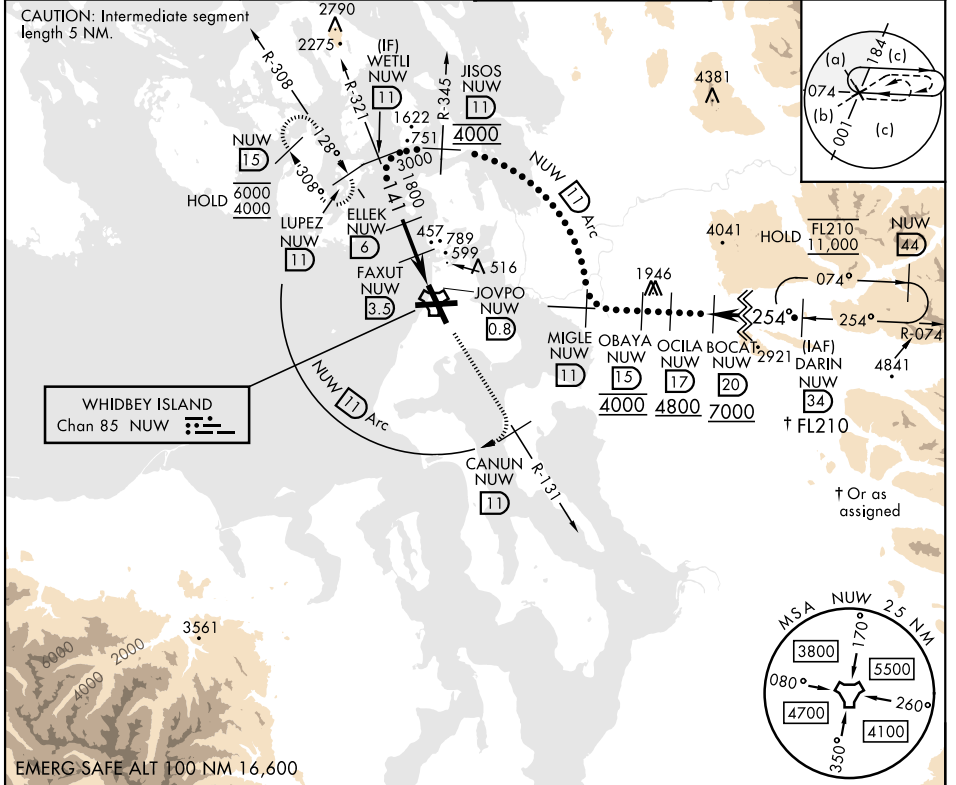
WHIDBEY ISLAND NAS (AULT FLD) (KNUW)

▲ \* When ALS inop, increase vis to 1½ miles.



MISSED APPROACH: Climb to 4000 via NUW TACAN R-131 to CANUN, then arc SW of NUW TACAN via 11 DME Arc to LUPEZ and hold.

ATIS <b>134.15 281.5</b>	WHIDBEY APP CON <b>120.7 270.8</b> (E) <b>118.2 285.65</b> (W)	WHIDBEY TOWER <b>127.9 340.2</b>	GND CON <b>121.75 336.4</b>
--------------------------	--	-------------------------------------	--------------------------------



CATEGORY	C	D	E
S-14*	560/55	521	(600-1)
CIRCLING	860-2½ 813 (900-2½)	900-2¾ 853 (900-2¾)	1200-3 1153 (1200-3)

HIRL Rwy 7-25, 14-32  
TDZL/CL Rwy 14

# HI-TACAN Z RWY 14

NW-1, 16 APR 2026 to 14 MAY 2026

NW-1, 16 APR 2026 to 14 MAY 2026