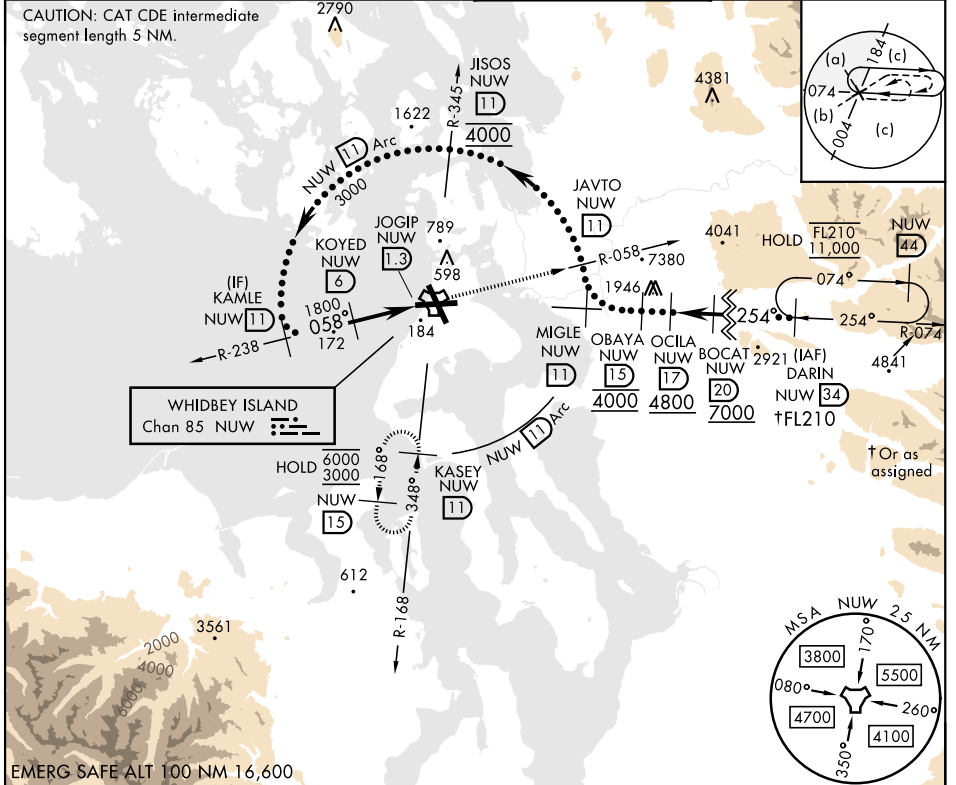


# HI-TACAN Z RWY 7

TACAN Chan <b>85</b>	APCH CRS <b>058°</b>	Rwy ldg TDZE <b>25</b> Arprt Elev <b>47</b>	[USN]	WHIDBEY ISLAND NAS (AULT FLD) (KNUW)
-------------------------	-------------------------	---	-------	--------------------------------------

**MISSSED APPROACH:** Climb to 3000 via NUW TACAN R-058 to JAVTO, then arc SE of NUW via 11 DME Arc to KASEY and hold.

ATIS <b>134.15 281.5</b>	WHIDBEY APP CON <b>120.7 270.8 (E)</b> <b>118.2 285.65 (W)</b>	WHIDBEY TOWER <b>127.9 340.2</b>	GND CON <b>121.75 336.4</b>
-----------------------------	--	-------------------------------------	--------------------------------



	KAMLE NUW 11	KOYED NUW 6	JOGIP NUW 1.3	JAVTO NUW 11	NUW 11	ELEV 47	TDZE 25
	3000	1800	2.96°	3000 NUW R-058	Arc		
CATEGORY	C	D	E				
S-7	440/60	415	(400-1½)				
CIRCLING	860-2½ 813 (900-2½)	900-2¾ 853 (900-2¾)	1200-3 1153 (1200-3)				
	HIRL Rwy 7-25, 14-32			TDZL/RCLS Rwy 14			

# HI-TACAN Z RWY 7

NW-1, 16 APR 2026 to 14 MAY 2026

NW-1, 16 APR 2026 to 14 MAY 2026