

OAK HARBOR, WASHINGTON

RNAV (GPS) RWY 14

WAAS CH 50004 W14A	APCH CRS 137°	Rwy ldg TDZE Arprt Elev	8000 39 47
--------------------------	------------------	-------------------------------	------------------

-(USN)

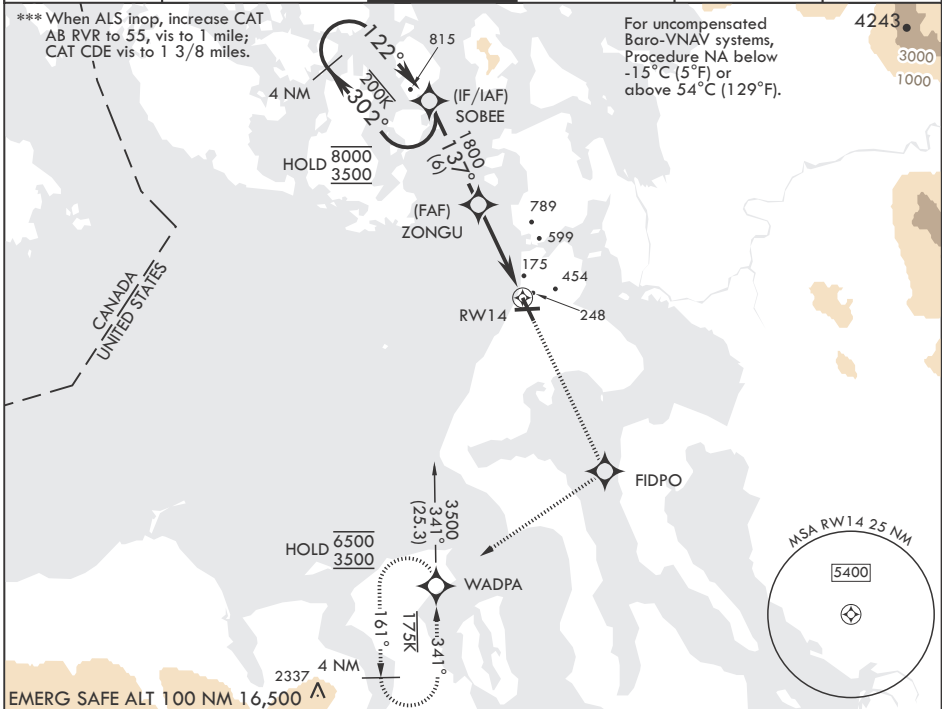
WHIDBEY ISLAND NAS (AULT FLD) (KNUW)

RNP APCH

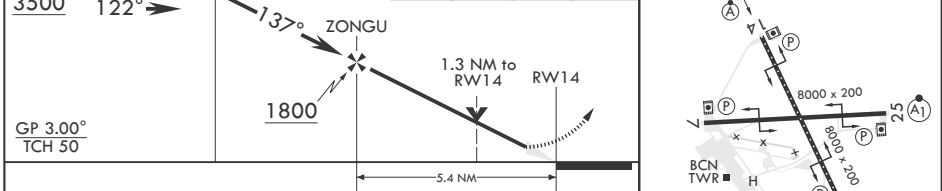
ALSF-2 MISSED APPROACH: Climb to 3500 direct FIDPO, and on track 218° to WADPA and hold. Do not exceed 230K.

* When TDZ/CL lights inop, increase RVR to 24. When ALS inop, increase RVR to 40, vis to 3/4 mile.
 ** When ALS inop, increase RVR to 60, vis to 1 1/8 miles.

ATIS 134.15 281.5	APP CON/DEP CON 118.2 285.65 (W) 120.7 270.8 (E)	TOWER 127.9 340.2	GND CON 121.75 336.4	CLNC DEL 135.1 379.9	ASR/PAR
----------------------	--	----------------------	-------------------------	-------------------------	---------



4 NM Holding Pattern	SOBEE	3500	FIDPO	tr 218°	WADPA	ELEV 47	TDZE 39
8000	← 302°						
3500	→ 122°						
GP 3.00°							
TCH 50							



CATEGORY	A	B	C	D	E
LPV DA*		239/18	200		(200-1/2)
LNAV/VNAV DA**		457/40	418		(500-3/4)
LNAV MDA***	500/24	461 (500-1/2)	500/50	461	(500-1)
CIRCLING	760-1	713 (800-1)	860-2 1/2 813 (900-2 1/2)	900-2 3/4 853 (900-2 3/4)	1200-3 1153 (1200-3)

HIRL all Rwys
TDZL/CL Rwy 14

OAK HARBOR, WASHINGTON

48°21'N - 122°39'W

WHIDBEY ISLAND NAS (AULT FLD) (KNUW)

Amdt 5 31OCT24

RNAV (GPS) RWY 14

NW-1, 16 APR 2026 to 14 MAY 2026

NW-1, 16 APR 2026 to 14 MAY 2026